

SampleWorks - 130 Cedar Building, Community Monitoring																						
Sample No.	Sampling Location	Collection Start/Date	Collection (Time on)	Collection End/Date	Collection Time (min)	Total collection time, min	Sample Volume (liters)	Analyte	Analytical Method	Lab	Lab Sample Receipt Date	Total Structure Count			Asbestos < 5 µm	Asbestos ≥ 5 µm	Result (µm/Strm)	Concentration (µg/cm ²)	EPA Site Specific Trigger Level	Exceeds EPA Site Specific Trigger Level?	Comments	
												All Asbestos	Chrysotile	Amphibole								
527953	3-90 West Courtyard at 2nd Floor Level	5/4/2008	7:20 AM	5/4/2008	11:58 AM	264	1,584	Asbestos	AMERA 40 CFR Part 763, October 30, 1987 (Modified)	RLG TEM	5/8/2008	0	0	0	0	0	0	7.7	<0.019	70 SIm2	No	
527954	4- Albany St 6th Floor Scalloping	5/4/2008	7:34 AM	5/4/2008	11:58 AM	264	1,584	Asbestos	AMERA 40 CFR Part 763, October 30, 1987 (Modified)	RLG TEM	5/8/2008	0	0	0	0	0	0	8.2	<0.020	70 SIm2	No	
527955	5- Washington St 6th Floor Scalloping	5/4/2008	7:35 AM	5/4/2008	11:58 AM	264	1,578	Asbestos	AMERA 40 CFR Part 763, October 30, 1987 (Modified)	RLG TEM	5/8/2008	0	0	0	0	0	0	7.7	<0.020	70 SIm2	No	
527956	6- Cedar St 6th Floor Scalloping	5/4/2008	7:40 AM	5/4/2008	11:58 AM	265	1,578	Asbestos	AMERA 40 CFR Part 763, October 30, 1987 (Modified)	RLG TEM	5/8/2008	0	0	0	0	0	0	7.7	<0.020	70 SIm2	No	
527957	7- Roof, East Facade	5/4/2008	7:30 AM	5/4/2008	11:55 AM	265	1,590	Asbestos	AMERA 40 CFR Part 763, October 30, 1987 (Modified)	RLG TEM	5/8/2008	0	0	0	0	0	0	8.2	<0.019	70 SIm2	No	
527958	8- Roof, North Facade	5/4/2008	7:31 AM	5/4/2008	11:54 AM	263	1,578	Asbestos	AMERA 40 CFR Part 763, October 30, 1987 (Modified)	RLG TEM	5/8/2008	0	0	0	0	0	0	7.7	<0.019	70 SIm2	No	
527959	9- 90 West Courtyard at 2nd Floor Level	5/4/2008	7:17 AM	5/4/2008	11:48 AM	263	1,483	Asbestos	AMERA 40 CFR Part 763, October 30, 1987 (Modified)	RLG TEM	5/8/2008	0	0	0	0	0	0	8.2	<0.020	70 SIm2	No	
527960	4- Albany St 6th Floor Scalloping	5/4/2008	7:20 AM	5/4/2008	11:58 AM	264	1,742	Asbestos	AMERA 40 CFR Part 763, October 30, 1987 (Modified)	RLG TEM	5/8/2008	0	0	0	0	0	0	8.9	<0.020	70 SIm2	No	
527961	5- Washington St 6th Floor Scalloping	5/5/2008	7:20 AM	5/5/2008	11:58 AM	266	1,703	Asbestos	AMERA 40 CFR Part 763, October 30, 1987 (Modified)	RLG TEM	5/8/2008	0	0	0	0	0	0	8.2	<0.019	70 SIm2	No	
527962	6- Cedar St 6th Floor Scalloping	5/5/2008	7:22 AM	5/5/2008	11:59 AM	267	1,760	Asbestos	AMERA 40 CFR Part 763, October 30, 1987 (Modified)	RLG TEM	5/8/2008	0	0	0	0	0	0	8.9	<0.020	70 SIm2	No	
527963	7- Roof, East Facade	5/5/2008	7:25 AM	5/5/2008	11:58 AM	261	1,683	Asbestos	AMERA 40 CFR Part 763, October 30, 1987 (Modified)	RLG TEM	5/8/2008	0	0	0	0	0	0	8.2	<0.019	70 SIm2	No	
527964	8- Roof, North Facade	5/5/2008	7:30 AM	5/5/2008	11:58 AM	268	1,649	Asbestos	AMERA 40 CFR Part 763, October 30, 1987 (Modified)	RLG TEM	5/8/2008	0	0	0	0	0	0	8.2	<0.019	70 SIm2	No	
527965	9- 90 West Courtyard at 2nd Floor Level	5/5/2008	7:32 AM	5/5/2008	11:54 AM	263	1,544	Asbestos	AMERA 40 CFR Part 763, October 30, 1987 (Modified)	RLG TEM	5/8/2008	0	0	0	0	0	0	8.9	<0.020	70 SIm2	No	
527966	4- Albany St 6th Floor Scalloping	5/5/2008	7:24 AM	5/5/2008	11:11 PM	467	1,635	Asbestos	AMERA 40 CFR Part 763, October 30, 1987 (Modified)	RLG TEM	5/7/2008	0	0	0	0	0	0	8.2	<0.019	70 SIm2	No	
527967	5- Washington St 6th Floor Scalloping	5/5/2008	7:26 PM	5/5/2008	11:07 PM	461	1,591	Asbestos	AMERA 40 CFR Part 763, October 30, 1987 (Modified)	RLG TEM	5/7/2008	0	0	0	0	0	0	8.2	<0.020	70 SIm2	No	
527968	6- Cedar St 6th Floor Scalloping	5/5/2008	7:28 PM	5/5/2008	11:06 PM	463	1,586	Asbestos	AMERA 40 CFR Part 763, October 30, 1987 (Modified)	RLG TEM	5/7/2008	0	0	0	0	0	0	8.2	<0.019	70 SIm2	No	
527969	7- Roof, East Facade	5/5/2008	7:30 PM	5/5/2008	11:24 PM	494	1,729	Asbestos	AMERA 40 CFR Part 763, October 30, 1987 (Modified)	RLG TEM	5/7/2008	0	0	0	0	0	0	8.9	<0.020	70 SIm2	No	
527970	8- Roof, North Facade	5/5/2008	7:30 PM	5/5/2008	11:21 PM	493	1,701	Asbestos	AMERA 40 CFR Part 763, October 30, 1987 (Modified)	RLG TEM	5/7/2008	0	0	0	0	0	0	8.2	<0.019	70 SIm2	No	
527971	9- 90 West Courtyard at 2nd Floor Level	5/5/2008	7:33 PM	5/5/2008	11:21 PM	490	1,740	Asbestos	AMERA 40 CFR Part 763, October 30, 1987 (Modified)	RLG TEM	5/7/2008	0	0	0	0	0	0	8.9	<0.020	70 SIm2	No	
527972	4- Albany St 6th Floor Scalloping	5/5/2008	7:11 PM	5/5/2008	7:07 AM	476	1,666	Asbestos	AMERA 40 CFR Part 763, October 30, 1987 (Modified)	RLG TEM	5/7/2008	0	0	0	0	0	0	8.2	<0.019	70 SIm2	No	
527973	5- Washington St 6th Floor Scalloping	5/5/2008	7:10 PM	5/5/2008	7:10 AM	483	1,715	Asbestos	AMERA 40 CFR Part 763, October 30, 1987 (Modified)	RLG TEM	5/7/2008	0	0	0	0	0	0	8.9	<0.020	70 SIm2	No	
527974	6- Cedar St 6th Floor Scalloping	5/5/2008	7:11 PM	5/5/2008	7:09 AM	490	1,739	Asbestos	AMERA 40 CFR Part 763, October 30, 1987 (Modified)	RLG TEM	5/7/2008	0	0	0	0	0	0	8.8	<0.020	70 SIm2	No	
527975	7- Roof, East Facade	5/5/2008	7:12 PM	5/5/2008	7:22 AM	478	1,673	Asbestos	AMERA 40 CFR Part 763, October 30, 1987 (Modified)	RLG TEM	5/7/2008	0	0	0	0	0	0	8.2	<0.019	70 SIm2	No	
527976	8- Roof, North Facade	5/5/2008	7:12 PM	5/5/2008	7:24 AM	483	1,691	Asbestos	AMERA 40 CFR Part 763, October 30, 1987 (Modified)	RLG TEM	5/7/2008	0	0	0	0	0	0	8.2	<0.019	70 SIm2	No	
527977	9- 90 West Courtyard at 2nd Floor Level	5/5/2008	7:13 PM	5/5/2008	7:23 AM	486	1,686	Asbestos	AMERA 40 CFR Part 763, October 30, 1987 (Modified)	RLG TEM	5/7/2008	0	0	0	0	0	0	8.9	<0.020	70 SIm2	No	
527978	4- Albany St 6th Floor Scalloping	5/5/2008	7:11 AM	5/5/2008	7:59 PM	472	1,652	Asbestos	AMERA 40 CFR Part 763, October 30, 1987 (Modified)	RLG TEM	5/7/2008	0	0	0	0	0	0	8.2	<0.019	70 SIm2	No	
527979	5- Washington St 6th Floor Scalloping	5/5/2008	7:08 AM	5/5/2008	3:00 PM	472	1,746	Asbestos	AMERA 40 CFR Part 763, October 30, 1987 (Modified)	RLG TEM	5/7/2008	0	0	0	0	0	0	8.9	<0.020	70 SIm2	No	
527980	6- Cedar St 6th Floor Scalloping	5/5/2008	7:10 AM	5/5/2008	3:00 PM	462	1,640	Asbestos	AMERA 40 CFR Part 763, October 30, 1987 (Modified)	RLG TEM	5/7/2008	0	0	0	0	0	0	8.2	<0.019	70 SIm2	No	
527981	7- Roof, East Facade	5/5/2008	7:12 AM	5/5/2008	3:00 PM	467	1,658	Asbestos	AMERA 40 CFR Part 763, October 30, 1987 (Modified)	RLG TEM	5/7/2008	0	0	0	0	0	0	8.2	<0.019	70 SIm2	No	
527982	8- Roof, North Facade	5/5/2008	7:14 AM	5/5/2008	3:00 PM	463	1,660	Asbestos	AMERA 40 CFR Part 763, October 30, 1987 (Modified)	RLG TEM	5/7/2008	0	0	0	0	0	0	8.2	<0.019	70 SIm2	No	
527983	9- 90 West Courtyard at 2nd Floor Level	5/5/2008	7:15 PM	5/5/2008	3:00 PM	484	1,670	Asbestos	AMERA 40 CFR Part 763, October 30, 1987 (Modified)	RLG TEM	5/8/2008	0	0	0	0	0	0	8.2	<0.019	70 SIm2	No	
527984	4- Albany St 6th Floor Scalloping	5/5/2008	7:29 PM	5/5/2008	10:46 PM	467	1,635	Asbestos	AMERA 40 CFR Part 763, October 30, 1987 (Modified)	RLG TEM	5/8/2008	0	0	0	0	0	0	8.2	<0.019	70 SIm2	No	
527985	5- Washington St 6th Floor Scalloping	5/5/2008	7:31 PM	5/5/2008	10:47 PM	466	1,631	Asbestos	AMERA 40 CFR Part 763, October 30, 1987 (Modified)	RLG TEM	5/8/2008	0	0	0	0	0	0	8.2	<0.019	70 SIm2	No	
527986	6- Cedar St 6th Floor Scalloping	5/5/2008	7:24 PM	5/5/2008	10:55 PM	461	1,684	Asbestos	AMERA 40 CFR Part 763, October 30, 1987 (Modified)	RLG TEM	5/8/2008	0	0	0	0	0	0	8.2	<0.019	70 SIm2	No	
527987	7- Roof, East Facade	5/5/2008	7:30 PM	5/5/2008	10:36 PM	447	1,565	Asbestos	AMERA 40 CFR Part 763, October 30, 1987 (Modified)	RLG TEM	5/8/2008	0	0	0	0	0	0	7.7	<0.019	70 SIm2	No	
527988	8- Roof, North Facade	5/5/2008	7:35 PM	5/5/2008	10:36 PM	453	1,586	Asbestos	AMERA 40 CFR Part 763, October 30, 1987 (Modified)	RLG TEM	5/8/2008	0	0	0	0	0	0	8.2	<0.020	70 SIm2	No	
527989	9- 90 West Courtyard at 2nd Floor Level	5/7/2008	7:16 AM	5/7/2008	3:19 PM	483	1,642	Asbestos	AMERA 40 CFR Part 763, October 30, 1987 (Modified)	RLG TEM	5/8/2008	N/A	N/A	N/A	N/A	N/A	N/A	N/A	N/A	N/A	N/A	(Sample Voided in Laboratory - Excessive Particulate Loading (35%))
527990	4- Albany St 6th Floor Scalloping	5/7/2008	7:20 AM	5/7/2008	3:37 PM	487	1,764	Asbestos	AMERA 40 CFR Part 763, October 30, 1987 (Modified)	RLG TEM	5/8/2008	0	0	0	0	0	0	8.8	<0.019	70 SIm2	No	
527991	5- Washington St 6th Floor Scalloping	5/7/2008	7:20 AM	5/7/2008	3:30 PM	490	1,715	Asbestos	AMERA 40 CFR Part 763, October 30, 1987 (Modified)	RLG TEM	5/8/2008	0	0	0	0	0	0	8.8	<0.020	70 SIm2	No	
527992	6- Cedar St 6th Floor Scalloping	5/7/2008	7:23 AM	5/7/2008	3:41 PM	498	1,783	Asbestos	AMERA 40 CFR Part 763, October 30, 1987 (Modified)	RLG TEM	5/8/2008	0	0	0	0	0	0	8.8	<0.019	70 SIm2	No	
527993	7- Roof, East Facade	5/7/2008	7:25 AM	5/7/2008	3:24 PM	475	1,639	Asbestos	AMERA 40 CFR Part 763, October 30, 1987 (Modified)	RLG TEM	5/8/2008	0	0	0	0	0	0	8.2	<0.019	70 SIm2	No	
527994	8- Roof, North Facade	5/7/2008	7:31 AM	5/7/2008	3:29 PM	493	1,663	Asbestos	AMERA 40 CFR Part 763, October 30, 1987 (Modified)	RLG TEM	5/8/2008	0	0	0	0	0	0	8.2	<0.019	70 SIm2	No	
527995	9- 90 West Courtyard at 2nd Floor Level	5/7/2008	7:31 PM	5/7/2008	11:15 PM	476	1,666	Asbestos	AMERA 40 CFR Part 763, October 30, 1987 (Modified)	RLG TEM	5/9/2008	0	0	0	0	0	0	8.2	<0.019	70 SIm2	No	
527996	4- Albany St 6th Floor Scalloping	5/7/2008	7:37 PM	5/7/2008	11:08 PM	461	1,579	Asbestos	AMERA 40 CFR Part 763, October 30, 1987 (Modified)	RLG TEM	5/9/2008	0	0	0	0	0	0	7.7	<0.019	70 SIm2	No	
527997	5- Washington St 6th Floor Scalloping	5/7/2008	7:30 PM	5/7/2008	11:09 PM	459	1,584	Asbestos	AMERA 40 CFR Part 763, October 30, 1987 (Modified)	RLG TEM	5/9/2008	0	0	0	0	0	0	8.2	<0.020	70 SIm2	No	
527998	6- Cedar St 6th Floor Scalloping	5/7/2008	7:41 PM	5/7/2008	11:13 PM	452	1,582	Asbestos	AMERA 40 CFR Part 763, October 30, 1987 (Modified)	RLG TEM	5/9/2008	0	0	0	0	0	0	8.2	<0.020	70 SIm2	No	
527999	7- Roof, East Facade	5/7/2008	7:24 PM	5/7/2008	11:04 PM	460	1,656	Asbestos	AMERA 40 CFR Part 763, October 30, 1987 (Modified)	RLG TEM	5/9/2008	0	0	0	0	0	0	8.2	<0.019	70 SIm2	No	
528000	8- Roof, North Facade	5/7/2008	7:26 PM	5/7/2008	11:05 PM	459	1,584	Asbestos	AMERA 40 CFR Part 763, October 30, 1987 (Modified)	RLG TEM	5/9/2008	0	0	0	0	0	0	8.2	<0.020	70 SIm2	No	
528001	9- 90 West Courtyard at 2nd Floor Level	5/8/2008	7:25 AM	5/8/2008	3:01 PM	462	1,537	Asbestos	AMERA 40 CFR Part 763, October 30, 1987 (Modified)	RLG TEM	5/9/2008	0	0	0	0	0	0	7.7	<0.019	70 SIm2	No	
528002	4- Albany St 6th Floor Scalloping	5/8/2008	7:35 AM	5/8/2008	3:10 PM	451	1,624	Asbestos	AMERA 40 CFR Part 763, October 30, 1987 (Modified)	RLG TEM	5/9/2008	1	1	0	1	0	0	8.2	<0.019	70 SIm2	No	
528003	5- Washington St 6th Floor Scalloping	5/8/2008	7:38 AM	5/8/2008	3:09 PM	451	1,624	Asbestos	AMERA 40 CFR Part 763, October 30, 1987 (Modified)	RLG TEM	5/9/2008	0	0	0	0	0	0	8.2	<0.019	70 SIm2	No	
528004	6- Cedar St 6th Floor Scalloping	5/8/2008	7:32 AM	5/8/2008	3:04 PM	452	1,650	Asbestos	AMERA 40 CFR Part 763, October 30, 1987 (Modified)	RLG TEM	5/9/2008	1	1	0	1	0	0	8.2	<0.019	70 SIm2	No	
528005	7- Roof, East Facade	5/8/2008	7:35 AM	5/8/2008	3:08 PM	452	1,570	Asbestos	AMERA 40 CFR Part 763, October 30, 1987 (Modified)	RLG TEM	5/9/2008	0	0	0	0	0	0	7.7	&			

Sample No.	Sampling Location	Collection Start Date	Collection (Time on)	Collection End Date	Collection (Time off)	Total collection time, minutes	Sample Volume (liters)	Analyte	Analytical Method	Lab	Lab Sample Receipt Date	Target Air Quality Levels											Exceeds Target Air Quality Levels	Exceeds EPA Site Specific Trigger Levels	Comments	
												Barium Concentration (µg/m³)	Chromium Concentration (µg/m³)	Manganese Concentration (µg/m³)	Zinc Concentration (µg/m³)	Beryllium Concentration (µg/m³)	Copper Concentration (µg/m³)	Mercury Particulate Concentration (µg/m³)	Cadmium Concentration (µg/m³)	Lead Concentration (µg/m³)	Nickel Concentration (µg/m³)	Antimony Concentration (µg/m³)				
												0.50	0.50	0.50	10.00	0.02	10.00	0.30	0.04	1.00	0.30	0.50				
5277156	3 - 90 West Courtyard at 2nd Floor Level	5/4/2008	8:24 AM	5/5/2008	6:55 AM	1:31	4,729	Metals	NIOSH 7300 Modified ICP-MS	R.G.G. Metals	5/6/2008	0.056	< 0.042	0.009	0.12	< 0.0021	0.027	< 0.0020	0.061	< 0.0020	0.021	< 0.013	No	No		
5277159	4 - Albany St 6th Floor Scaffolding	5/4/2008	7:50 AM	5/5/2008	7:20 AM	1:410	5,075	Metals	NIOSH 7300 Modified ICP-MS	R.G.G. Metals	5/6/2008	0.020	< 0.039	0.011	0.11	< 0.0020	0.031	< 0.0020	< 0.0020	< 0.008	0.014	< 0.012	No	No		
5277164	5 - Washington St 6th Floor Scaffolding	5/4/2008	8:00 AM	5/5/2008	7:58 AM	1:408	5,085	Metals	NIOSH 7300 Modified ICP-MS	R.G.G. Metals	5/6/2008	0.030	0.045	0.011	0.11	< 0.0020	0.027	< 0.0020	< 0.0020	< 0.008	0.015	< 0.012	No	No		
5277169	6 - Center St 6th Floor Scaffolding	5/4/2008	7:05 AM	5/5/2008	7:05 AM	1:375	4,960	Metals	NIOSH 7300 Modified ICP-MS	R.G.G. Metals	5/6/2008	0.020	0.043	0.012	0.13	< 0.0020	0.033	< 0.0020	< 0.0020	< 0.008	0.015	< 0.012	No	No		
5277172	7 - Roof East Facade	5/4/2008	7:30 AM	5/5/2008	7:29 AM	1:457	4,992	Metals	NIOSH 7300 Modified ICP-MS	R.G.G. Metals	5/6/2008	0.026	0.032	0.010	0.11	< 0.0020	0.031	< 0.0020	< 0.0020	< 0.008	0.015	< 0.012	No	No		
5277176	8 - Roof North Facade	5/4/2008	7:47 AM	5/5/2008	7:41 AM	1:434	5,132	Metals	NIOSH 7300 Modified ICP-MS	R.G.G. Metals	5/6/2008	0.023	0.043	0.009	0.12	< 0.0020	0.033	< 0.0020	< 0.0020	< 0.008	0.015	< 0.012	No	No		
5279000	3 - 90 West Courtyard at 2nd Floor Level	5/6/2008	8:58 AM	5/6/2008	7:58 AM	1:450	5,003	Metals	NIOSH 7300 Modified ICP-MS	R.G.G. Metals	5/7/2008	0.030	0.029	0.030	0.19	< 0.0020	0.043	< 0.0020	< 0.0020	0.007	0.015	< 0.012	No	No		
5279004	4 - Albany St 6th Floor Scaffolding	5/6/2008	7:25 AM	5/6/2008	7:35 AM	1:450	5,075	Metals	NIOSH 7300 Modified ICP-MS	R.G.G. Metals	5/7/2008	0.063	0.052	0.030	0.16	< 0.0020	0.036	< 0.0020	< 0.0020	0.031	0.019	0.015	No	No		
5279008	5 - Washington St 6th Floor Scaffolding	5/6/2008	7:13 AM	5/6/2008	7:45 AM	1:449	5,072	Metals	NIOSH 7300 Modified ICP-MS	R.G.G. Metals	5/7/2008	0.072	0.054	0.029	0.19	< 0.0020	0.061	< 0.0020	< 0.0020	0.021	0.014	0.012	No	No		
5279012	6 - Center St 6th Floor Scaffolding	5/6/2008	7:10 AM	5/6/2008	7:19 AM	1:441	5,216	Metals	NIOSH 7300 Modified ICP-MS	R.G.G. Metals	5/7/2008	0.140	< 0.039	0.038	0.27	< 0.0019	0.050	< 0.0019	< 0.0019	0.11	0.015	< 0.012	No	No		
5279016	7 - Roof East Facade	5/6/2008	7:23 AM	5/6/2008	7:23 AM	1:433	5,178	Metals	NIOSH 7300 Modified ICP-MS	R.G.G. Metals	5/7/2008	0.030	0.053	0.019	0.14	< 0.0019	0.057	< 0.0019	< 0.0019	0.019	0.014	0.014	< 0.012	No	No	
5279020	8 - Roof North Facade	5/6/2008	7:42 AM	5/6/2008	7:41 AM	1:431	5,214	Metals	NIOSH 7300 Modified ICP-MS	R.G.G. Metals	5/7/2008	0.049	0.056	0.021	0.13	< 0.0019	0.043	< 0.0019	< 0.0019	0.011	0.015	< 0.012	No	No		
5279024	3 - 90 West Courtyard at 2nd Floor Level	5/6/2008	7:11 AM	5/7/2008	6:52 AM	1:421	4,831	Metals	NIOSH 7300 Modified ICP-MS	R.G.G. Metals	5/8/2008	0.073	0.044	0.035	0.16	< 0.0021	0.047	< 0.0021	< 0.0021	0.038	0.016	0.012	No	No		
5279028	4 - Albany St 6th Floor Scaffolding	5/6/2008	7:38 AM	5/7/2008	7:18 AM	1:420	4,941	Metals	NIOSH 7300 Modified ICP-MS	R.G.G. Metals	5/8/2008	0.052	0.057	0.026	0.14	< 0.0020	0.043	< 0.0020	< 0.0020	0.030	0.011	0.012	No	No		
5279032	5 - Washington St 6th Floor Scaffolding	5/6/2008	7:46 AM	5/7/2008	7:26 AM	1:422	4,977	Metals	NIOSH 7300 Modified ICP-MS	R.G.G. Metals	5/8/2008	0.051	0.062	0.028	0.14	< 0.0020	0.040	< 0.0020	< 0.0020	0.017	0.010	0.012	No	No		
5279034	6 - Center St 6th Floor Scaffolding	5/6/2008	7:55 AM	5/7/2008	7:40 AM	1:425	4,418	Metals	NIOSH 7300 Modified ICP-MS	R.G.G. Metals	5/8/2008	0.014	< 0.045	0.010	0.13	< 0.0023	0.012	< 0.0023	< 0.0023	< 0.009	0.014	0.014	< 0.012	No	No	
5279038	7 - Roof East Facade	5/6/2008	7:22 AM	5/7/2008	7:21 AM	1:422	4,877	Metals	NIOSH 7300 Modified ICP-MS	R.G.G. Metals	5/8/2008	0.057	< 0.040	0.038	0.14	< 0.0020	0.048	< 0.0020	< 0.0020	0.019	0.017	0.012	No	No		
5279040	7 - Roof East Facade	5/6/2008	7:29 AM	5/7/2008	7:24 AM	1:435	5,007	Metals	NIOSH 7300 Modified ICP-MS	R.G.G. Metals	5/8/2008	0.044	0.046	0.025	0.13	< 0.0023	0.012	< 0.0023	< 0.0023	0.012	0.012	0.012	< 0.012	No	No	
5279044	8 - Roof North Facade	5/6/2008	7:41 AM	5/7/2008	7:40 AM	1:429	5,088	Metals	NIOSH 7300 Modified ICP-MS	R.G.G. Metals	5/8/2008	0.051	0.040	0.026	0.13	< 0.0020	0.041	< 0.0020	< 0.0020	0.012	0.012	0.012	< 0.012	No	No	
5279048	3 - 90 West Courtyard at 2nd Floor Level	5/7/2008	6:58 AM	5/8/2008	7:58 AM	1:448	3,982	Metals	NIOSH 7300 Modified ICP-MS	R.G.G. Metals	5/9/2008	0.187	0.055	0.052	0.27	< 0.0025	0.036	< 0.0025	< 0.0025	0.119	0.014	0.015	< 0.012	No	No	
5279052	4 - Albany St 6th Floor Scaffolding	5/7/2008	7:21 AM	5/8/2008	7:33 AM	1:450	5,075	Metals	NIOSH 7300 Modified ICP-MS	R.G.G. Metals	5/9/2008	0.060	< 0.039	0.029	0.18	< 0.0020	0.036	< 0.0020	< 0.0020	0.029	0.015	0.012	No	No		
5279056	5 - Washington St 6th Floor Scaffolding	5/7/2008	7:33 AM	5/8/2008	7:43 AM	1:450	4,950	Metals	NIOSH 7300 Modified ICP-MS	R.G.G. Metals	5/9/2008	0.050	< 0.041	0.030	0.15	< 0.0020	0.029	< 0.0020	< 0.0020	0.032	0.014	0.015	< 0.012	No	No	
5279058	6 - Center St 6th Floor Scaffolding	5/7/2008	7:08 AM	5/8/2008	7:18 AM	1:450	5,148	Metals	NIOSH 7300 Modified ICP-MS	R.G.G. Metals	5/9/2008	0.120	0.042	0.042	0.19	< 0.0019	0.032	< 0.0019	< 0.0019	0.019	0.019	0.019	< 0.012	No	No	
5279062	7 - Roof East Facade	5/7/2008	7:29 AM	5/8/2008	7:28 AM	1:436	5,112	Metals	NIOSH 7300 Modified ICP-MS	R.G.G. Metals	5/9/2008	0.040	< 0.039	0.024	0.12	< 0.0020	0.028	< 0.0020	< 0.0020	0.014	0.011	0.012	< 0.012	No	No	
5279064	7 - Roof East Facade	5/7/2008	7:46 AM	5/8/2008	7:40 AM	1:435	5,142	Metals	NIOSH 7300 Modified ICP-MS	R.G.G. Metals	5/9/2008	0.039	0.052	0.027	0.13	< 0.0019	0.028	< 0.0019	< 0.0019	0.015	0.009	0.012	< 0.012	No	No	
5279068	3 - 90 West Courtyard at 2nd Floor Level	5/8/2008	7:10 AM	5/9/2008	7:00 AM	1:430	4,934	Metals	NIOSH 7300 Modified ICP-MS	R.G.G. Metals	5/10/2008	0.233	< 0.041	0.039	0.22	< 0.0020	0.024	< 0.0020	< 0.0020	0.127	0.009	0.009	< 0.012	No	No	
5279074	4 - Albany St 6th Floor Scaffolding	5/8/2008	7:37 AM	5/9/2008	7:40 AM	1:433	4,978	Metals	NIOSH 7300 Modified ICP-MS	R.G.G. Metals	5/10/2008	0.024	< 0.041	0.012	0.12	< 0.0020	0.016	< 0.0020	< 0.0020	0.019	0.008	0.012	< 0.012	No	No	
5279078	5 - Washington St 6th Floor Scaffolding	5/8/2008	7:47 AM	5/9/2008	7:50 AM	1:443	4,978	Metals	NIOSH 7300 Modified ICP-MS	R.G.G. Metals	5/10/2008	0.033	< 0.041	0.015	0.14	< 0.0020	0.024	< 0.0020	< 0.0020	0.028	0.008	0.008	< 0.012	No	No	
5279082	6 - Center St 6th Floor Scaffolding	5/8/2008	7:23 AM	5/9/2008	7:21 AM	1:438	4,961	Metals	NIOSH 7300 Modified ICP-MS	R.G.G. Metals	5/10/2008	0.051	0.046	0.025	0.16	< 0.0020	0.037	< 0.0020	< 0.0020	0.053	0.003	0.021	< 0.012	No	No	
5279086	7 - Roof East Facade	5/8/2008	7:28 AM	5/9/2008	7:27 AM	1:438	5,001	Metals	NIOSH 7300 Modified ICP-MS	R.G.G. Metals	5/10/2008	0.032	0.042	0.016	0.13	< 0.0020	0.022	< 0.0020	< 0.0020	0.017	0.008	0.012	< 0.012	No	No	
5279090	7 - Roof North Facade	5/8/2008	7:45 AM	5/9/2008	7:35 AM	1:434	5,108	Metals	NIOSH 7300 Modified ICP-MS	R.G.G. Metals	5/10/2008	0.026	< 0.039	0.019	0.13	< 0.0020	0.029	< 0.0020	< 0.0020	0.016	0.008	0.013	< 0.012	No	No	
5279094	8 - Roof North Facade	5/8/2008	7:14 AM	5/10/2008	7:05 AM	1:451	5,079	Metals	NIOSH 7300 Modified ICP-MS	R.G.G. Metals	5/12/2008	0.076	< 0.039	0.017	0.16	< 0.0020	0.016	< 0.0020	< 0.0020	0.050	0.010	0.012	< 0.012	No	No	
5279098	4 - Albany St 6th Floor Scaffolding	5/9/2008	7:45 AM	5/10/2008	7:48 AM	1:443	5,061	Metals	NIOSH 7300 Modified ICP-MS	R.G.G. Metals	5/12/2008	0.014	0.044	0.010	0.14	< 0.0020	0.016	< 0.0020	< 0.0020	0.009	0.015	0.012	< 0.012	No	No	
5279104	5 - Washington St 6th Floor Scaffolding	5/9/2008	8:00 AM	5/10/2008	8:00 AM	1:442	5,119	Metals	NIOSH 7300 Modified ICP-MS	R.G.G. Metals	5/12/2008	0.012	< 0.038	0.010	0.15	< 0.0020	0.013	< 0.0020	< 0.0020	0.014	0.008	0.014	< 0.012	No	No	
5279108	6 - Center St 6th Floor Scaffolding	5/9/2008	7:30 AM	5/10/2008	8:18 AM	1:489	5,212	Metals	NIOSH 7300 Modified ICP-MS	R.G.G. Metals	5/12/2008	0.012	< 0.038	0.010	0.11	< 0.0020	0.021	< 0.0020	< 0.0020	0.009	0.009	0.009	< 0.012	No	No	
5279109	7 - Roof East Facade	5/9/2008	7:32 AM	5/10/2008	7:34 AM	1:442	4,900	Metals	NIOSH 7300 Modified ICP-MS	R.G.G. Metals	5/12/2008	0.020	0.073	0.013	0.11	< 0.0020	0.016	< 0.0020	< 0.0020	0.008	0.010	0.010	< 0.012	No	No	
5279112	7 - Roof East Facade	5/9/2008	7:45 AM	5/10/2008	7:45 AM	1:440	4,982	Metals	NIOSH 7300 Modified ICP-MS	R.G.G. Metals	5/12/2008	0.015	0.041	0.009	0.11	< 0.0021	0.017	< 0.0021	< 0.0021	0.010	0.009	0.010	< 0.012	No	No	
5279132	3 - 90 West Courtyard at 2nd Floor Level	5/10/2008	7:29 AM	5/11/2008	8:18 AM	1:489																				

MasterWorks - 130 Cedar Building, Community Monitoring

Sample No.	Sampling Location	Collection Start Date	Collection (Time on)	Collection End Date	Collection (Time off)	Total Collection Time, minutes	Volumes (liters)	Analysis	Analytical Method	Lab	Lab Sample Receipt Date	Mercury Concentration (ng/m ³)	EPA Site Specific Trigger Level for Mercury (ng/m ³)	Exceeds Target Air Quality or EPA Site Specific Level?	Comments
5277159	3 - 90 West Courtyard at 2nd Floor Level	5/4/2008	8:24 AM	5/5/2008	6:55 AM	1,351	540	Mercury	EPA 324/1631 mod.	BRL	05/06/2008	< 6	3,000	No	
5277163	4 - Albany St 6th Floor Scaffolding	5/4/2008	7:50 AM	5/5/2008	7:20 AM	1,410	557	Mercury	EPA 324/1631 mod.	BRL	05/06/2008	< 6	3,000	No	
5277167	5 - Washington St 6th Floor Scaffolding	5/4/2008	8:00 AM	5/5/2008	7:28 AM	1,408	563	Mercury	EPA 324/1631 mod.	BRL	05/06/2008	< 6	3,000	No	
5277171	6 - Cedar St 6th Floor Scaffolding	5/4/2008	8:10 AM	5/5/2008	7:05 AM	1,375	529	Mercury	EPA 324/1631 mod.	BRL	05/06/2008	< 6	3,000	No	
5277175	7 - Roof, East Facade	5/4/2008	7:38 AM	5/5/2008	7:25 AM	1,427	549	Mercury	EPA 324/1631 mod.	BRL	05/06/2008	< 6	3,000	No	
5277179	8 - Roof, North Facade	5/4/2008	7:47 AM	5/5/2008	7:41 AM	1,434	574	Mercury	EPA 324/1631 mod.	BRL	05/06/2008	< 6	3,000	No	
5279003	3 - 90 West Courtyard at 2nd Floor Level	5/5/2008	6:58 AM	5/6/2008	7:08 AM	1,450	580	Mercury	EPA 324/1631 mod.	BRL	05/07/2008	< 5	3,000	No	
5279007	4 - Albany St 6th Floor Scaffolding	5/5/2008	7:25 AM	5/6/2008	7:35 AM	1,450	566	Mercury	EPA 324/1631 mod.	BRL	05/07/2008	< 5	3,000	No	
5279011	5 - Washington St 6th Floor Scaffolding	5/5/2008	7:33 AM	5/6/2008	7:42 AM	1,449	580	Mercury	EPA 324/1631 mod.	BRL	05/07/2008	< 5	3,000	No	
5279015	6 - Cedar St 6th Floor Scaffolding	5/5/2008	7:10 AM	5/6/2008	7:19 AM	1,449	580	Mercury	EPA 324/1631 mod.	BRL	05/07/2008	< 5	3,000	No	
5279019	7 - Roof, East Facade	5/5/2008	7:30 AM	5/6/2008	7:23 AM	1,433	566	Mercury	EPA 324/1631 mod.	BRL	05/07/2008	< 5	3,000	No	
5279023	8 - Roof, North Facade	5/5/2008	7:45 AM	5/6/2008	7:36 AM	1,431	572	Mercury	EPA 324/1631 mod.	BRL	05/07/2008	35	3,000	No	
5279027	3 - 90 West Courtyard at 2nd Floor Level	5/6/2008	7:11 AM	5/7/2008	6:52 AM	1,421	561	Mercury	EPA 324/1631 mod.	BRL	05/08/2008	< 5	3,000	No	
5279031	4 - Albany St 6th Floor Scaffolding	5/6/2008	7:38 AM	5/7/2008	7:18 AM	1,420	533	Mercury	EPA 324/1631 mod.	BRL	05/08/2008	< 6	3,000	No	
5279035	5 - Washington St 6th Floor Scaffolding	5/6/2008	7:46 AM	5/7/2008	7:28 AM	1,422	569	Mercury	EPA 324/1631 mod.	BRL	05/08/2008	< 5	3,000	No	
5279039	6 - Cedar St 6th Floor Scaffolding	5/6/2008	7:22 AM	5/7/2008	7:04 AM	1,422	562	Mercury	EPA 324/1631 mod.	BRL	05/08/2008	< 5	3,000	No	
5279043	7 - Roof, East Facade	5/6/2008	7:29 AM	5/7/2008	7:24 AM	1,435	553	Mercury	EPA 324/1631 mod.	BRL	05/08/2008	< 6	3,000	No	
5279047	8 - Roof, North Facade	5/6/2008	7:41 AM	5/7/2008	7:40 AM	1,439	568	Mercury	EPA 324/1631 mod.	BRL	05/08/2008	17	3,000	No	
5277243	3 - 90 West Courtyard at 2nd Floor Level	5/7/2008	6:56 AM	5/8/2008	7:04 AM	1,448	579	Mercury	EPA 324/1631 mod.	BRL	05/09/2008	< 5	3,000	No	
5277247	4 - Albany St 6th Floor Scaffolding	5/7/2008	7:23 AM	5/8/2008	7:33 AM	1,450	566	Mercury	EPA 324/1631 mod.	BRL	05/09/2008	< 5	3,000	No	
5277251	5 - Washington St 6th Floor Scaffolding	5/7/2008	7:33 AM	5/8/2008	7:43 AM	1,450	566	Mercury	EPA 324/1631 mod.	BRL	05/09/2008	6	3,000	No	
5277255	6 - Cedar St 6th Floor Scaffolding	5/7/2008	7:08 AM	5/8/2008	7:18 AM	1,450	566	Mercury	EPA 324/1631 mod.	BRL	05/09/2008	< 5	3,000	No	
5277259	7 - Roof, East Facade	5/7/2008	7:29 AM	5/8/2008	7:24 AM	1,435	531	Mercury	EPA 324/1631 mod.	BRL	05/09/2008	< 6	3,000	No	
5277287	8 - Roof, North Facade	5/7/2008	7:45 AM	5/8/2008	7:40 AM	1,435	538	Mercury	EPA 324/1631 mod.	BRL	05/09/2008	< 6	3,000	No	
5277287	3 - 90 West Courtyard at 2nd Floor Level	5/8/2008	7:10 AM	5/9/2008	7:00 AM	1,430	551	Mercury	EPA 324/1631 mod.	BRL	05/10/2008	< 6	3,000	No	
5277247	4 - Albany St 6th Floor Scaffolding	5/8/2008	7:37 AM	5/9/2008	7:40 AM	1,443	577	Mercury	EPA 324/1631 mod.	BRL	05/10/2008	< 5	3,000	No	
5278327	5 - Washington St 6th Floor Scaffolding	5/8/2008	7:47 AM	5/9/2008	7:59 AM	1,443	563	Mercury	EPA 324/1631 mod.	BRL	05/10/2008	< 5	3,000	No	
5277574	5 - Washington St 6th Floor Scaffolding	5/8/2008	7:55 AM	5/9/2008	7:56 AM	1,441	576	Mercury	EPA 324/1631 mod.	BRL	05/10/2008	< 5	3,000	No	
5277279	6 - Cedar St 6th Floor Scaffolding	5/8/2008	7:23 AM	5/9/2008	7:21 AM	1,438	561	Mercury	EPA 324/1631 mod.	BRL	05/10/2008	< 5	3,000	No	
5277283	7 - Roof, East Facade	5/8/2008	7:29 AM	5/9/2008	7:27 AM	1,438	554	Mercury	EPA 324/1631 mod.	BRL	05/10/2008	< 6	3,000	No	
5277263	8 - Roof, North Facade	5/8/2008	7:45 AM	5/9/2008	7:39 AM	1,434	559	Mercury	EPA 324/1631 mod.	BRL	05/10/2008	< 6	3,000	No	
5279337	3 - 90 West Courtyard at 2nd Floor Level	5/9/2008	7:05 AM	5/10/2008	7:25 AM	1,460	562	Mercury	EPA 324/1631 mod.	BRL	05/12/2008	< 5	3,000	No	
5279341	4 - Albany St 6th Floor Scaffolding	5/9/2008	7:45 AM	5/10/2008	7:48 AM	1,443	505	Mercury	EPA 324/1631 mod.	BRL	05/12/2008	< 6	3,000	No	
5279345	5 - Washington St 6th Floor Scaffolding	5/9/2008	8:00 AM	5/10/2008	8:02 AM	1,442	577	Mercury	EPA 324/1631 mod.	BRL	05/12/2008	< 5	3,000	No	
5279349	6 - Cedar St 6th Floor Scaffolding	5/9/2008	7:30 AM	5/10/2008	8:19 AM	1,489	596	Mercury	EPA 324/1631 mod.	BRL	05/12/2008	< 5	3,000	No	
5279353	7 - Roof, East Facade	5/9/2008	7:32 AM	5/10/2008	7:34 AM	1,442	555	Mercury	EPA 324/1631 mod.	BRL	05/12/2008	< 6	3,000	No	
5279357	8 - Roof, North Facade	5/9/2008	7:45 AM	5/10/2008	7:45 AM	1,440	576	Mercury	EPA 324/1631 mod.	BRL	05/12/2008	< 5	3,000	No	
5279385	3 - 90 West Courtyard at 2nd Floor Level	5/10/2008	7:29 AM	5/11/2008	8:18 AM	1,489	573	Mercury	EPA 324/1631 mod.	BRL	05/13/2008	< 5	3,000	No	
5279389	4 - Albany St 6th Floor Scaffolding	5/10/2008	7:50 AM	5/11/2008	7:55 AM	1,445	506	Mercury	EPA 324/1631 mod.	BRL	05/13/2008	< 6	3,000	No	
5279393	5 - Washington St 6th Floor Scaffolding	5/10/2008	8:07 AM	5/11/2008	7:41 AM	1,414	566	Mercury	EPA 324/1631 mod.	BRL	05/13/2008	< 5	3,000	No	
5279397	6 - Cedar St 6th Floor Scaffolding	5/10/2008	8:21 AM	5/11/2008	7:24 AM	1,383	539	Mercury	EPA 324/1631 mod.	BRL	05/13/2008	< 6	3,000	No	
5274938	7 - Roof, East Facade	5/10/2008	7:38 AM	5/11/2008	7:20 AM	1,422	441	Mercury	EPA 324/1631 mod.	BRL	05/13/2008	< 7	3,000	No	
5274942	8 - Roof, North Facade	5/10/2008	7:49 AM	5/11/2008	7:35 AM	1,426	542	Mercury	EPA 324/1631 mod.	BRL	05/13/2008	< 6	3,000	No	

MasterWorks - 130 Cedar Building, Community Monitoring

Sample No.	Sampling Location	Collection Start Date	Collection (Time on)	Collection End Date	Collection (Time off)	Total Collection Time, minutes	Volume (liters)	Analysis	Analytical Method	Lab	Lab Sample Receipt Date	Asbestos Concentration (f/cc)	MMVF Concentration (f/cc)	EPA Site Specific Trigger Level	Exceeds EPA Site Specific Trigger Level?	Comments
5277158	3 - 90 West Courtyard at 2nd Floor Level	5/4/2008	8:24 AM	5/5/2008	6:55 AM	1,351	4,053	Asbestos PCME fibers	ISO 14966 mod	RJLG SEM	5/6/2008	<0.00005	<0.00005	0.0009 f/cc	No	
5277162	4 - Albany St 6th Floor Scaffolding	5/4/2008	7:50 AM	5/5/2008	7:20 AM	1,410	4,230	Asbestos PCME fibers	ISO 14966 mod	RJLG SEM	5/6/2008	<0.00005	<0.00005	0.0009 f/cc	No	
5277166	5 - Washington St 6th Floor Scaffolding	5/4/2008	8:00 AM	5/5/2008	7:28 AM	1,408	4,294	Asbestos PCME fibers	ISO 14966 mod	RJLG SEM	5/6/2008	<0.00005	<0.00005	0.0009 f/cc	No	
5277170	6 - Cedar St 6th Floor Scaffolding	5/4/2008	8:10 AM	5/5/2008	7:05 AM	1,375	4,194	Asbestos PCME fibers	ISO 14966 mod	RJLG SEM	5/6/2008	<0.00005	<0.00005	0.0009 f/cc	No	
5277174	7 - Roof, East Facade	5/4/2008	7:38 AM	5/5/2008	7:25 AM	1,427	4,251	Asbestos PCME fibers	ISO 14966 mod	RJLG SEM	5/6/2008	<0.00005	<0.00005	0.0009 f/cc	No	
5277178	8 - Roof, North Facade	5/4/2008	7:47 AM	5/5/2008	7:41 AM	1,434	4,505	Asbestos PCME fibers	ISO 14966 mod	RJLG SEM	5/6/2008	<0.00005	<0.00005	0.0009 f/cc	No	
5279002	3 - 90 West Courtyard at 2nd Floor Level	5/5/2008	6:58 AM	5/6/2008	7:08 AM	1,450	4,423	Asbestos PCME fibers	ISO 14966 mod	RJLG SEM	5/7/2008	<0.00005	0.00005	0.0009 f/cc	No	
5279006	4 - Albany St 6th Floor Scaffolding	5/5/2008	7:25 AM	5/6/2008	7:35 AM	1,450	4,350	Asbestos PCME fibers	ISO 14966 mod	RJLG SEM	5/7/2008	<0.00005	<0.00005	0.0009 f/cc	No	
5279010	5 - Washington St 6th Floor Scaffolding	5/5/2008	7:33 AM	5/6/2008	7:42 AM	1,449	4,347	Asbestos PCME fibers	ISO 14966 mod	RJLG SEM	5/7/2008	<0.00005	<0.00005	0.0009 f/cc	No	
5279014	6 - Cedar St 6th Floor Scaffolding	5/5/2008	7:10 AM	5/6/2008	7:19 AM	1,449	4,420	Asbestos PCME fibers	ISO 14966 mod	RJLG SEM	5/7/2008	<0.00005	<0.00005	0.0009 f/cc	No	
5279018	7 - Roof, East Facade	5/5/2008	7:30 AM	5/6/2008	7:23 AM	1,433	4,216	Asbestos PCME fibers	ISO 14966 mod	RJLG SEM	5/7/2008	<0.00005	<0.00005	0.0009 f/cc	No	
5279022	8 - Roof, North Facade	5/5/2008	7:45 AM	5/6/2008	7:36 AM	1,431	4,488	Asbestos PCME fibers	ISO 14966 mod	RJLG SEM	5/7/2008	<0.00005	<0.00005	0.0009 f/cc	No	
5279026	3 - 90 West Courtyard at 2nd Floor Level	5/6/2008	7:11 AM	5/7/2008	6:52 AM	1,421	4,263	Asbestos PCME fibers	ISO 14966 mod	RJLG SEM	5/8/2008	<0.00005	0.00005	0.0009 f/cc	No	
5279030	4 - Albany St 6th Floor Scaffolding	5/6/2008	7:38 AM	5/7/2008	7:18 AM	1,420	4,331	Asbestos PCME fibers	ISO 14966 mod	RJLG SEM	5/8/2008	<0.00005	0.00005	0.0009 f/cc	No	
5279034	5 - Washington St 6th Floor Scaffolding	5/6/2008	7:46 AM	5/7/2008	7:28 AM	1,422	4,622	Asbestos PCME fibers	ISO 14966 mod	RJLG SEM	5/8/2008	<0.00004	<0.00004	0.0009 f/cc	No	
5277536	5 - Washington St 6th Floor Scaffolding	5/6/2008	7:55 AM	5/7/2008	7:40 AM	1,425	4,489	Asbestos PCME fibers	ISO 14966 mod	RJLG SEM	5/8/2008	<0.00005	<0.00005	0.0009 f/cc	No	
5279038	6 - Cedar St 6th Floor Scaffolding	5/6/2008	7:22 AM	5/7/2008	7:04 AM	1,422	4,266	Asbestos PCME fibers	ISO 14966 mod	RJLG SEM	5/8/2008	<0.00005	0.00005	0.0009 f/cc	No	
5279042	7 - Roof, East Facade	5/6/2008	7:29 AM	5/7/2008	7:24 AM	1,435	4,258	Asbestos PCME fibers	ISO 14966 mod	RJLG SEM	5/8/2008	<0.00005	<0.00005	0.0009 f/cc	No	
5279046	8 - Roof, North Facade	5/6/2008	7:41 AM	5/7/2008	7:40 AM	1,439	4,408	Asbestos PCME fibers	ISO 14966 mod	RJLG SEM	5/8/2008	<0.00005	<0.00005	0.0009 f/cc	No	
5277242	3 - 90 West Courtyard at 2nd Floor Level	5/7/2008	6:56 AM	5/8/2008	7:04 AM	1,448	4,344	Asbestos PCME fibers	ISO 14966 mod	RJLG SEM	5/9/2008	0.00005	0.00009	0.0009 f/cc	No	
5277270	4 - Albany St 6th Floor Scaffolding	5/7/2008	7:23 AM	5/8/2008	7:33 AM	1,450	4,350	Asbestos PCME fibers	ISO 14966 mod	RJLG SEM	5/9/2008	<0.00005	0.00005	0.0009 f/cc	No	
5277250	5 - Washington St 6th Floor Scaffolding	5/7/2008	7:33 AM	5/8/2008	7:43 AM	1,450	4,350	Asbestos PCME fibers	ISO 14966 mod	RJLG SEM	5/9/2008	<0.00005	<0.00005	0.0009 f/cc	No	
5277254	6 - Cedar St 6th Floor Scaffolding	5/7/2008	7:08 AM	5/8/2008	7:18 AM	1,450	4,423	Asbestos PCME fibers	ISO 14966 mod	RJLG SEM	5/9/2008	<0.00005	<0.00005	0.0009 f/cc	No	
5277258	7 - Roof, East Facade	5/7/2008	7:29 AM	5/8/2008	7:24 AM	1,435	4,540	Asbestos PCME fibers	ISO 14966 mod	RJLG SEM	5/9/2008	<0.00004	<0.00004	0.0009 f/cc	No	
5277286	8 - Roof, North Facade	5/7/2008	7:45 AM	5/8/2008	7:40 AM	1,435	4,250	Asbestos PCME fibers	ISO 14966 mod	RJLG SEM	5/9/2008	<0.00005	<0.00005	0.0009 f/cc	No	
5277286	3 - 90 West Courtyard at 2nd Floor Level	5/8/2008	7:10 AM	5/9/2008	7:00 AM	1,430	4,147	Asbestos PCME fibers	ISO 14966 mod	RJLG SEM	5/10/2008	0.00016	<0.00005	0.0009 f/cc	No	
5277246	4 - Albany St 6th Floor Scaffolding	5/8/2008	7:37 AM	5/9/2008	7:40 AM	1,443	4,185	Asbestos PCME fibers	ISO 14966 mod	RJLG SEM	5/10/2008	<0.00005	<0.00005	0.0009 f/cc	No	
5279326	5 - Washington St 6th Floor Scaffolding	5/8/2008	7:47 AM	5/9/2008	7:50 AM	1,443	4,185	Asbestos PCME fibers	ISO 14966 mod	RJLG SEM	5/10/2008	<0.00005	0.00005	0.0009 f/cc	No	
5277278	6 - Cedar St 6th Floor Scaffolding	5/8/2008	7:23 AM	5/9/2008	7:21 AM	1,438	4,170	Asbestos PCME fibers	ISO 14966 mod	RJLG SEM	5/10/2008	<0.00005	<0.00005	0.0009 f/cc	No	
5277282	7 - Roof, East Facade	5/8/2008	7:29 AM	5/9/2008	7:27 AM	1,438	4,236	Asbestos PCME fibers	ISO 14966 mod	RJLG SEM	5/10/2008	<0.00005	0.00005	0.0009 f/cc	No	
5277262	8 - Roof, North Facade	5/8/2008	7:45 AM	5/9/2008	7:39 AM	1,434	4,243	Asbestos PCME fibers	ISO 14966 mod	RJLG SEM	5/10/2008	<0.00005	0.00005	0.0009 f/cc	No	
5279336	3 - 90 West Courtyard at 2nd Floor Level	5/9/2008	7:05 AM	5/10/2008	7:25 AM	1,460	4,161	Asbestos PCME fibers	ISO 14966 mod	RJLG SEM	5/12/2008	<0.00005	<0.00005	0.0009 f/cc	No	
5279340	4 - Albany St 6th Floor Scaffolding	5/9/2008	7:45 AM	5/10/2008	7:48 AM	1,443	4,401	Asbestos PCME fibers	ISO 14966 mod	RJLG SEM	5/12/2008	<0.00005	<0.00005	0.0009 f/cc	No	
5279344	5 - Washington St 6th Floor Scaffolding	5/9/2008	8:00 AM	5/10/2008	8:02 AM	1,442	4,398	Asbestos PCME fibers	ISO 14966 mod	RJLG SEM	5/12/2008	<0.00005	<0.00005	0.0009 f/cc	No	
5279348	6 - Cedar St 6th Floor Scaffolding	5/9/2008	7:30 AM	5/10/2008	8:19 AM	1,489	4,467	Asbestos PCME fibers	ISO 14966 mod	RJLG SEM	5/12/2008	<0.00005	<0.00005	0.0009 f/cc	No	
5279352	7 - Roof, East Facade	5/9/2008	7:32 AM	5/10/2008	7:34 AM	1,442	4,382	Asbestos PCME fibers	ISO 14966 mod	RJLG SEM	5/12/2008	<0.00005	<0.00005	0.0009 f/cc	No	
5279356	8 - Roof, North Facade	5/9/2008	7:45 AM	5/10/2008	7:45 AM	1,440	4,165	Asbestos PCME fibers	ISO 14966 mod	RJLG SEM	5/12/2008	<0.00005	<0.00005	0.0009 f/cc	No	
5279384	3 - 90 West Courtyard at 2nd Floor Level	5/10/2008	7:29 AM	5/11/2008	8:18 AM	1,489	4,542	Asbestos PCME fibers	ISO 14966 mod	RJLG SEM	5/13/2008	<0.00004	<0.00004	0.0009 f/cc	No	
5279388	4 - Albany St 6th Floor Scaffolding	5/10/2008	7:50 AM	5/11/2008	7:55 AM	1,445	4,407	Asbestos PCME fibers	ISO 14966 mod	RJLG SEM	5/13/2008	<0.00005	<0.00005	0.0009 f/cc	No	
5279392	5 - Washington St 6th Floor Scaffolding	5/10/2008	8:07 AM	5/11/2008	7:41 AM	1,414	4,101	Asbestos PCME fibers	ISO 14966 mod	RJLG SEM	5/13/2008	<0.00005	<0.00005	0.0009 f/cc	No	
5279396	6 - Cedar St 6th Floor Scaffolding	5/10/2008	8:21 AM	5/11/2008	7:24 AM	1,383	3,872	Asbestos PCME fibers	ISO 14966 mod	RJLG SEM	5/13/2008	<0.00005	<0.00005	0.0009 f/cc	No	
5274937	7 - Roof, East Facade	5/10/2008	7:38 AM	5/11/2008	7:20 AM	1,422	4,332	Asbestos PCME fibers	ISO 14966 mod	RJLG SEM	5/13/2008	<0.00005	<0.00005	0.0009 f/cc	No	
5274941	8 - Roof, North Facade	5/10/2008	7:49 AM	5/11/2008	7:35 AM	1,426	4,338	Asbestos PCME fibers	ISO 14966 mod	RJLG SEM	5/13/2008	<0.00005	<0.00005	0.0009 f/cc	No	

Sample No.	Sampling Location	Collection Start Date	Collection (Time on)	Collection End Date	Collection (Time off)	Total collection time, minutes	Sample Volume (liters)	Analyte	Analytical Method	Lab	Lab Sample Receipt Date	Respirable Dust Concentration (mg/m ³)	Respirable Quartz Concentration (mg/m ³)	Target Air quality Level for Respirable Quartz (mg/m ³)	EPA Site Specific Trigger Level for Respirable Quartz (mg/m ³)	Exceeds Target Air quality of EPA Site Specific Level?	Comments
5277157	3 - 90 West Courtyard at 2nd Floor Level	5/4/2008	8:24 AM	5/5/2008	6:55 AM	1,351	3,378	Dust and Quartz	NIOSH 0600/7500	RJLJ XRD	5/6/2008	< 0.030	< 0.001	0.01	0.01	No	
5277161	4 - Albany St 6th Floor Scaffolding	5/4/2008	7:50 AM	5/5/2008	7:20 AM	1,410	3,596	Dust and Quartz	NIOSH 0600/7500	RJLJ XRD	5/6/2008	< 0.028	< 0.001	0.01	0.01	No	
5277165	5 - Washington St 6th Floor Scaffolding	5/4/2008	8:00 AM	5/5/2008	7:28 AM	1,408	3,520	Dust and Quartz	NIOSH 0600/7500	RJLJ XRD	5/8/2008	< 0.028	< 0.001	0.01	0.01	No	
5277169	6 - Cedar St 6th Floor Scaffolding	5/4/2008	8:10 AM	5/5/2008	7:05 AM	1,375	3,163	Dust and Quartz	NIOSH 0600/7500	RJLJ XRD	5/6/2008	< 0.032	< 0.002	0.01	0.01	No	
5277173	7 - Roof, East Facade	5/4/2008	7:38 AM	5/5/2008	7:25 AM	1,427	3,568	Dust and Quartz	NIOSH 0600/7500	RJLJ XRD	5/6/2008	< 0.028	< 0.001	0.01	0.01	No	
5277177	8 - Roof, North Facade	5/4/2008	7:47 AM	5/5/2008	7:41 AM	1,434	3,800	Dust and Quartz	NIOSH 0600/7500	RJLJ XRD	5/6/2008	< 0.028	< 0.001	0.01	0.01	No	
5279001	3 - 90 West Courtyard at 2nd Floor Level	5/5/2008	6:58 AM	5/6/2008	7:08 AM	1,450	3,625	Dust and Quartz	NIOSH 0600/7500	RJLJ XRD	5/7/2008	< 0.028	< 0.001	0.01	0.01	No	
5279005	4 - Albany St 6th Floor Scaffolding	5/5/2008	7:25 AM	5/6/2008	7:35 AM	1,450	3,843	Dust and Quartz	NIOSH 0600/7500	RJLJ XRD	5/7/2008	< 0.026	< 0.001	0.01	0.01	No	
5279009	5 - Washington St 6th Floor Scaffolding	5/5/2008	7:33 AM	5/6/2008	7:42 AM	1,449	3,767	Dust and Quartz	NIOSH 0600/7500	RJLJ XRD	5/7/2008	< 0.027	< 0.001	0.01	0.01	No	
5279013	6 - Cedar St 6th Floor Scaffolding	5/5/2008	7:10 AM	5/6/2008	7:19 AM	1,449	3,695	Dust and Quartz	NIOSH 0600/7500	RJLJ XRD	5/7/2008	< 0.027	< 0.001	0.01	0.01	No	
5279017	7 - Roof, East Facade	5/5/2008	7:30 AM	5/6/2008	7:23 AM	1,433	3,654	Dust and Quartz	NIOSH 0600/7500	RJLJ XRD	5/7/2008	< 0.027	< 0.001	0.01	0.01	No	
5279021	8 - Roof, North Facade	5/5/2008	7:45 AM	5/6/2008	7:38 AM	1,431	3,649	Dust and Quartz	NIOSH 0600/7500	RJLJ XRD	5/7/2008	< 0.027	< 0.001	0.01	0.01	No	
5279025	3 - 90 West Courtyard at 2nd Floor Level	5/6/2008	7:11 AM	5/7/2008	6:52 AM	1,421	3,410	Dust and Quartz	NIOSH 0600/7500	RJLJ XRD	5/8/2008	< 0.029	< 0.001	0.01	0.01	No	
5279029	4 - Albany St 6th Floor Scaffolding	5/6/2008	7:38 AM	5/7/2008	7:18 AM	1,420	3,550	Dust and Quartz	NIOSH 0600/7500	RJLJ XRD	5/8/2008	< 0.028	< 0.001	0.01	0.01	No	
5279033	5 - Washington St 6th Floor Scaffolding	5/6/2008	7:46 AM	5/7/2008	7:28 AM	1,422	3,697	Dust and Quartz	NIOSH 0600/7500	RJLJ XRD	5/8/2008	< 0.027	< 0.001	0.01	0.01	No	
5279035	6 - Washington St 6th Floor Scaffolding	5/6/2008	7:55 AM	5/7/2008	7:40 AM	1,425	4,061	Dust and Quartz	NIOSH 0600/7500	RJLJ XRD	5/8/2008	< 0.025	< 0.001	0.01	0.01	No	
5279037	6 - Cedar St 6th Floor Scaffolding	5/6/2008	7:22 AM	5/7/2008	7:04 AM	1,422	3,271	Dust and Quartz	NIOSH 0600/7500	RJLJ XRD	5/8/2008	< 0.031	< 0.002	0.01	0.01	No	
5279041	7 - Roof, East Facade	5/6/2008	7:29 AM	5/7/2008	7:24 AM	1,435	3,875	Dust and Quartz	NIOSH 0600/7500	RJLJ XRD	5/8/2008	< 0.028	< 0.001	0.01	0.01	No	
5279045	8 - Roof, North Facade	5/6/2008	7:41 AM	5/7/2008	7:40 AM	1,439	3,670	Dust and Quartz	NIOSH 0600/7500	RJLJ XRD	5/8/2008	< 0.027	< 0.001	0.01	0.01	No	
5277241	3 - 90 West Courtyard at 2nd Floor Level	5/7/2008	6:56 AM	5/8/2008	7:04 AM	1,448	3,548	Dust and Quartz	NIOSH 0600/7500	RJLJ XRD	5/9/2008	0.031	< 0.001	0.01	0.01	No	
5277269	4 - Albany St 6th Floor Scaffolding	5/7/2008	7:23 AM	5/8/2008	7:33 AM	1,450	3,335	Dust and Quartz	NIOSH 0600/7500	RJLJ XRD	5/9/2008	< 0.030	< 0.001	0.01	0.01	No	
5277249	5 - Washington St 6th Floor Scaffolding	5/7/2008	7:33 AM	5/8/2008	7:43 AM	1,450	3,045	Dust and Quartz	NIOSH 0600/7500	RJLJ XRD	5/9/2008	< 0.033	< 0.002	0.01	0.01	No	
5277253	6 - Cedar St 6th Floor Scaffolding	5/7/2008	7:08 AM	5/8/2008	7:18 AM	1,450	3,480	Dust and Quartz	NIOSH 0600/7500	RJLJ XRD	5/9/2008	0.029	< 0.001	0.01	0.01	No	
5277257	7 - Roof, East Facade	5/7/2008	7:29 AM	5/8/2008	7:24 AM	1,435	3,659	Dust and Quartz	NIOSH 0600/7500	RJLJ XRD	5/9/2008	< 0.027	< 0.001	0.01	0.01	No	
5277265	8 - Roof, North Facade	5/7/2008	7:45 AM	5/8/2008	7:40 AM	1,435	3,659	Dust and Quartz	NIOSH 0600/7500	RJLJ XRD	5/9/2008	< 0.027	< 0.001	0.01	0.01	No	
5277265	3 - 90 West Courtyard at 2nd Floor Level	5/8/2008	7:10 AM	5/9/2008	7:00 AM	1,430	3,432	Dust and Quartz	NIOSH 0600/7500	RJLJ XRD	5/10/2008	< 0.029	< 0.001	0.01	0.01	No	
5277245	4 - Albany St 6th Floor Scaffolding	5/8/2008	7:37 AM	5/9/2008	7:40 AM	1,443	3,463	Dust and Quartz	NIOSH 0600/7500	RJLJ XRD	5/10/2008	< 0.029	< 0.001	0.01	0.01	No	
5279325	5 - Washington St 6th Floor Scaffolding	5/8/2008	7:47 AM	5/9/2008	7:50 AM	1,443	3,463	Dust and Quartz	NIOSH 0600/7500	RJLJ XRD	5/10/2008	< 0.029	< 0.001	0.01	0.01	No	
5277277	6 - Cedar St 6th Floor Scaffolding	5/8/2008	7:23 AM	5/9/2008	7:21 AM	1,438	3,236	Dust and Quartz	NIOSH 0600/7500	RJLJ XRD	5/10/2008	< 0.031	< 0.002	0.01	0.01	No	
5277281	7 - Roof, East Facade	5/8/2008	7:29 AM	5/9/2008	7:27 AM	1,438	3,687	Dust and Quartz	NIOSH 0600/7500	RJLJ XRD	5/10/2008	< 0.027	< 0.001	0.01	0.01	No	
5277261	8 - Roof, North Facade	5/8/2008	7:45 AM	5/9/2008	7:39 AM	1,434	3,513	Dust and Quartz	NIOSH 0600/7500	RJLJ XRD	5/10/2008	< 0.028	< 0.001	0.01	0.01	No	
5279335	3 - 90 West Courtyard at 2nd Floor Level	5/9/2008	7:05 AM	5/10/2008	7:25 AM	1,460	3,650	Dust and Quartz	NIOSH 0600/7500	RJLJ XRD	5/12/2008	< 0.027	< 0.001	0.01	0.01	No	
5279339	4 - Albany St 6th Floor Scaffolding	5/9/2008	7:45 AM	5/10/2008	7:49 AM	1,443	3,463	Dust and Quartz	NIOSH 0600/7500	RJLJ XRD	5/12/2008	< 0.029	< 0.001	0.01	0.01	No	
5279343	5 - Washington St 6th Floor Scaffolding	5/9/2008	8:00 AM	5/10/2008	8:02 AM	1,442	3,677	Dust and Quartz	NIOSH 0600/7500	RJLJ XRD	5/12/2008	< 0.027	< 0.001	0.01	0.01	No	
5279347	6 - Cedar St 6th Floor Scaffolding	5/9/2008	7:30 AM	5/10/2008	8:19 AM	1,489	3,797	Dust and Quartz	NIOSH 0600/7500	RJLJ XRD	5/12/2008	< 0.026	< 0.001	0.01	0.01	No	
5279351	7 - Roof, East Facade	5/9/2008	7:32 AM	5/10/2008	7:34 AM	1,442	3,605	Dust and Quartz	NIOSH 0600/7500	RJLJ XRD	5/12/2008	< 0.028	< 0.001	0.01	0.01	No	
5279355	8 - Roof, North Facade	5/9/2008	7:45 AM	5/10/2008	7:45 AM	1,440	3,456	Dust and Quartz	NIOSH 0600/7500	RJLJ XRD	5/12/2008	< 0.029	< 0.001	0.01	0.01	No	
5279383	3 - 90 West Courtyard at 2nd Floor Level	5/10/2008	7:29 AM	5/11/2008	8:18 AM	1,489	3,723	Dust and Quartz	NIOSH 0600/7500	RJLJ XRD	5/13/2008	< 0.027	< 0.001	0.01	0.01	No	
5279387	4 - Albany St 6th Floor Scaffolding	5/10/2008	7:50 AM	5/11/2008	7:55 AM	1,445	3,829	Dust and Quartz	NIOSH 0600/7500	RJLJ XRD	5/13/2008	< 0.026	< 0.001	0.01	0.01	No	
5279391	5 - Washington St 6th Floor Scaffolding	5/10/2008	8:07 AM	5/11/2008	7:41 AM	1,414	3,535	Dust and Quartz	NIOSH 0600/7500	RJLJ XRD	5/13/2008	< 0.028	< 0.001	0.01	0.01	No	
5279395	6 - Cedar St 6th Floor Scaffolding	5/10/2008	8:21 AM	5/11/2008	7:24 AM	1,383	3,527	Dust and Quartz	NIOSH 0600/7500	RJLJ XRD	5/13/2008	< 0.028	< 0.001	0.01	0.01	No	
5274936	7 - Roof, East Facade	5/10/2008	7:38 AM	5/11/2008	7:30 AM	1,422	3,697	Dust and Quartz	NIOSH 0600/7500	RJLJ XRD	5/13/2008	< 0.027	< 0.001	0.01	0.01	No	
5274940	8 - Roof, North Facade	5/10/2008	7:49 AM	5/11/2008	7:35 AM	1,426	3,596	Dust and Quartz	NIOSH 0600/7500	RJLJ XRD	5/13/2008	< 0.028	< 0.001	0.01	0.01	No	

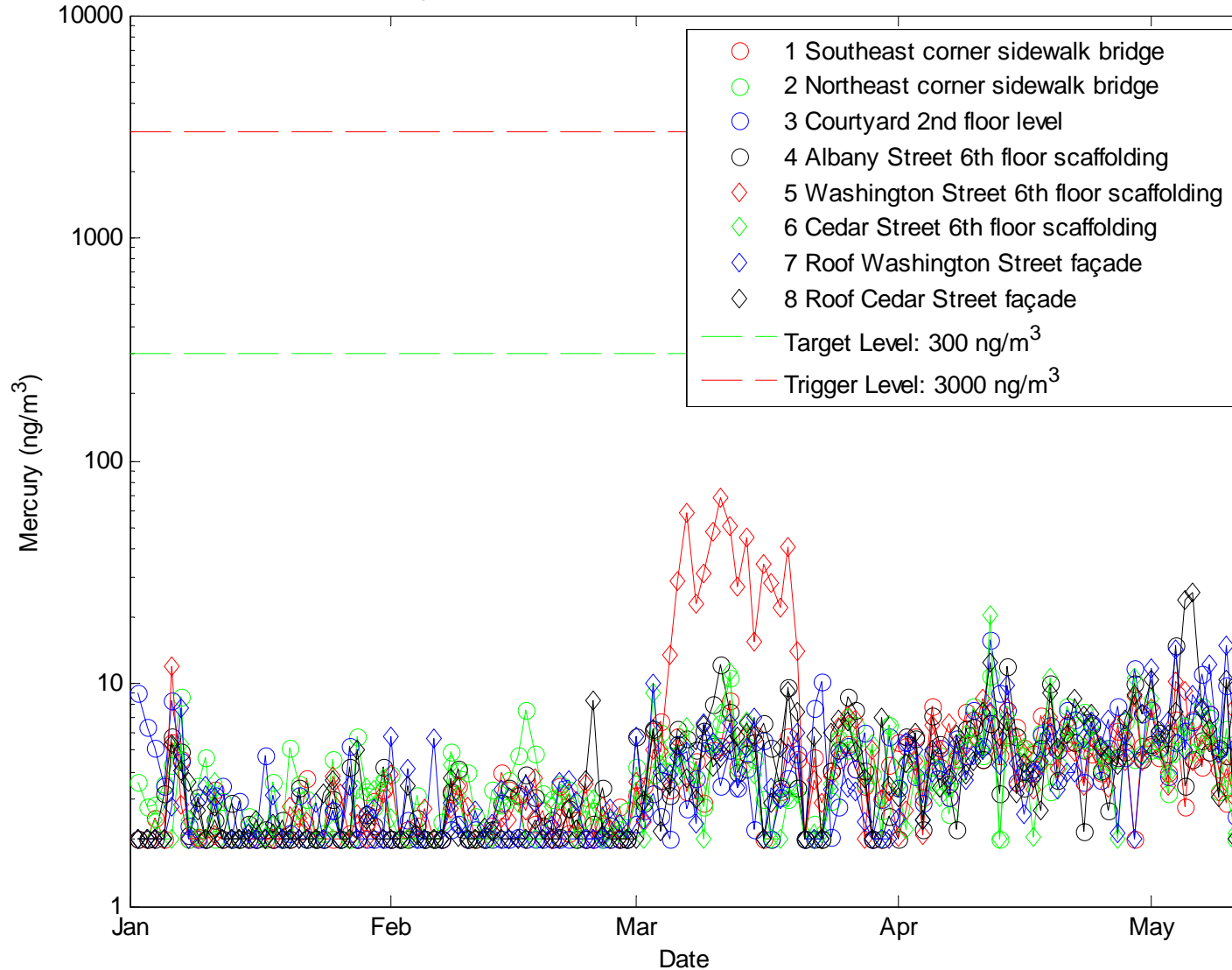
MasterWorks - 130 Cedar Building, Community Monitoring														
Sample No.	Sampling Location	Collection Start Date	Collection (Time on)	Collection End Date	Collection (Time off)	Total Collection Time, minutes	Analysis	Analytical Method	Instrument	Lab Sample Receipt Date	PM _{2.5} Avg. Concentration (µg/m ³)	EPA Site Specific Trigger Level for PM _{2.5} (µg/m ³)	Exceeds Target Air quality or EPA Site Specific Level?	Comments
N/A	3 - Courtyard, 2nd Floor Level	5/4/2008	12:00 AM	5/5/2008	12:00 AM	1,440	PM _{2.5}	Direct Read	Met One E-BAM Unit # G4526	N/A	19	65	No	
N/A	4 - Albany St 6th Floor Level Scaffolding	5/4/2008	12:00 AM	5/5/2008	12:00 AM	1,440	PM _{2.5}	Direct Read	Met One E-BAM Unit # G4728	N/A	22	65	No	
N/A	5 - Washington St 6th Floor Level Scaffolding	5/4/2008	12:00 AM	5/5/2008	12:00 AM	1,440	PM _{2.5}	Direct Read	Met One E-BAM Unit # G4729	N/A	25	65	No	
N/A	6 - Cedar St 6th Floor Level Scaffolding	5/4/2008	12:00 AM	5/5/2008	12:00 AM	1,440	PM _{2.5}	Direct Read	Met One E-BAM Unit # G4527	N/A	26	65	No	
N/A	7 - Roof, East	5/4/2008	12:00 AM	5/5/2008	12:00 AM	1,440	PM _{2.5}	Direct Read	Met One E-BAM Unit # F5001	N/A	20	65	No	
N/A	8 - Roof, North	5/4/2008	12:00 AM	5/5/2008	12:00 AM	1,440	PM _{2.5}	Direct Read	Met One E-BAM Unit # E3364	N/A	17	65	No	
N/A	3 - Courtyard, 2nd Floor Level	5/5/2008	12:00 AM	5/6/2008	12:00 AM	1,440	PM _{2.5}	Direct Read	Met One E-BAM Unit # G4526	N/A	12	65	No	
N/A	4 - Albany St 6th Floor Level Scaffolding	5/5/2008	12:00 AM	5/6/2008	12:00 AM	1,440	PM _{2.5}	Direct Read	Met One E-BAM Unit # G4728	N/A	13	65	No	
N/A	5 - Washington St 6th Floor Level Scaffolding	5/5/2008	12:00 AM	5/6/2008	12:00 AM	1,440	PM _{2.5}	Direct Read	Met One E-BAM Unit # G4729	N/A	11	65	No	
N/A	6 - Cedar St 6th Floor Level Scaffolding	5/5/2008	12:00 AM	5/6/2008	12:00 AM	1,440	PM _{2.5}	Direct Read	Met One E-BAM Unit # G4527	N/A	17	65	No	
N/A	7 - Roof, East	5/5/2008	12:00 AM	5/6/2008	12:00 AM	1,440	PM _{2.5}	Direct Read	Met One E-BAM Unit # F5001	N/A	12	65	No	
N/A	8 - Roof, North	5/5/2008	12:00 AM	5/6/2008	12:00 AM	1,440	PM _{2.5}	Direct Read	Met One E-BAM Unit # E3364	N/A	14	65	No	
N/A	3 - Courtyard, 2nd Floor Level	5/6/2008	12:00 AM	5/7/2008	12:00 AM	1,440	PM _{2.5}	Direct Read	Met One E-BAM Unit # G4526	N/A	17	65	No	
N/A	4 - Albany St 6th Floor Level Scaffolding	5/6/2008	12:00 AM	5/7/2008	12:00 AM	1,440	PM _{2.5}	Direct Read	Met One E-BAM Unit # G4728	N/A	18	65	No	
N/A	5 - Washington St 6th Floor Level Scaffolding	5/6/2008	12:00 AM	5/7/2008	12:00 AM	1,440	PM _{2.5}	Direct Read	Met One E-BAM Unit # G4729	N/A	17	65	No	
N/A	6 - Cedar St 6th Floor Level Scaffolding	5/6/2008	12:00 AM	5/7/2008	12:00 AM	1,440	PM _{2.5}	Direct Read	Met One E-BAM Unit # G4527	N/A	19	65	No	
N/A	7 - Roof, East	5/6/2008	12:00 AM	5/7/2008	12:00 AM	1,440	PM _{2.5}	Direct Read	Met One E-BAM Unit # F5001	N/A	22	65	No	
N/A	8 - Roof, North	5/6/2008	12:00 AM	5/7/2008	12:00 AM	1,440	PM _{2.5}	Direct Read	Met One E-BAM Unit # E3364	N/A	20	65	No	
N/A	3 - Courtyard, 2nd Floor Level	5/7/2008	12:00 AM	5/8/2008	12:00 AM	1,440	PM _{2.5}	Direct Read	Met One E-BAM Unit # G4526	N/A	21	65	No	
N/A	4 - Albany St 6th Floor Level Scaffolding	5/7/2008	12:00 AM	5/8/2008	12:00 AM	1,440	PM _{2.5}	Direct Read	Met One E-BAM Unit # G4728	N/A	17	65	No	
N/A	5 - Washington St 6th Floor Level Scaffolding	5/7/2008	12:00 AM	5/8/2008	12:00 AM	1,440	PM _{2.5}	Direct Read	Met One E-BAM Unit # G4729	N/A	17	65	No	
N/A	6 - Cedar St 6th Floor Level Scaffolding	5/7/2008	12:00 AM	5/8/2008	12:00 AM	1,440	PM _{2.5}	Direct Read	Met One E-BAM Unit # G4527	N/A	20	65	No	
N/A	7 - Roof, East	5/7/2008	12:00 AM	5/8/2008	12:00 AM	880	PM _{2.5}	Direct Read	Met One E-BAM Unit # F5001	N/A	16	65	No	Instrument off-line for portion of day, conc. is not a 24 hr. avg.
N/A	8 - Roof, North	5/7/2008	12:00 AM	5/8/2008	12:00 AM	1,440	PM _{2.5}	Direct Read	Met One E-BAM Unit # E3364	N/A	17	65	No	
N/A	3 - Courtyard, 2nd Floor Level	5/8/2008	12:00 AM	5/9/2008	12:00 AM	1,440	PM _{2.5}	Direct Read	Met One E-BAM Unit # G4526	N/A	22	65	No	
N/A	4 - Albany St 6th Floor Level Scaffolding	5/8/2008	12:00 AM	5/9/2008	12:00 AM	1,440	PM _{2.5}	Direct Read	Met One E-BAM Unit # G4728	N/A	19	65	No	
N/A	5 - Washington St 6th Floor Level Scaffolding	5/8/2008	12:00 AM	5/9/2008	12:00 AM	1,440	PM _{2.5}	Direct Read	Met One E-BAM Unit # G4729	N/A	19	65	No	
N/A	6 - Cedar St 6th Floor Level Scaffolding	5/8/2008	12:00 AM	5/9/2008	12:00 AM	1,440	PM _{2.5}	Direct Read	Met One E-BAM Unit # G4527	N/A	22	65	No	
N/A	7 - Roof, East	5/8/2008	12:00 AM	5/9/2008	12:00 AM	1,430	PM _{2.5}	Direct Read	Met One E-BAM Unit # F5001	N/A	21	65	No	
N/A	8 - Roof, North	5/8/2008	12:00 AM	5/9/2008	12:00 AM	1,440	PM _{2.5}	Direct Read	Met One E-BAM Unit # E3364	N/A	26	65	No	
N/A	3 - Courtyard, 2nd Floor Level	5/9/2008	12:00 AM	5/10/2008	12:00 AM	1,440	PM _{2.5}	Direct Read	Met One E-BAM Unit # G4526	N/A	11	65	No	
N/A	4 - Albany St 6th Floor Level Scaffolding	5/9/2008	12:00 AM	5/10/2008	12:00 AM	1,440	PM _{2.5}	Direct Read	Met One E-BAM Unit # G4728	N/A	17	65	No	
N/A	5 - Washington St 6th Floor Level Scaffolding	5/9/2008	12:00 AM	5/10/2008	12:00 AM	1,440	PM _{2.5}	Direct Read	Met One E-BAM Unit # G4729	N/A	17	65	No	
N/A	6 - Cedar St 6th Floor Level Scaffolding	5/9/2008	12:00 AM	5/10/2008	12:00 AM	1,440	PM _{2.5}	Direct Read	Met One E-BAM Unit # G4527	N/A	21	65	No	
N/A	7 - Roof, East	5/9/2008	12:00 AM	5/10/2008	12:00 AM	1,440	PM _{2.5}	Direct Read	Met One E-BAM Unit # F5001	N/A	9	65	No	
N/A	8 - Roof, North	5/9/2008	12:00 AM	5/10/2008	12:00 AM	1,440	PM _{2.5}	Direct Read	Met One E-BAM Unit # E3364	N/A	10	65	No	
N/A	3 - Courtyard, 2nd Floor Level	5/10/2008	12:00 AM	5/11/2008	12:00 AM	1,440	PM _{2.5}	Direct Read	Met One E-BAM Unit # G4526	N/A	9	65	No	
N/A	4 - Albany St 6th Floor Level Scaffolding	5/10/2008	12:00 AM	5/11/2008	12:00 AM	1,440	PM _{2.5}	Direct Read	Met One E-BAM Unit # G4728	N/A	9	65	No	
N/A	5 - Washington St 6th Floor Level Scaffolding	5/10/2008	12:00 AM	5/11/2008	12:00 AM	1,440	PM _{2.5}	Direct Read	Met One E-BAM Unit # G4729	N/A	8	65	No	
N/A	6 - Cedar St 6th Floor Level Scaffolding	5/10/2008	12:00 AM	5/11/2008	12:00 AM	1,440	PM _{2.5}	Direct Read	Met One E-BAM Unit # G4527	N/A	10	65	No	
N/A	7 - Roof, East	5/10/2008	12:00 AM	5/11/2008	12:00 AM	1,440	PM _{2.5}	Direct Read	Met One E-BAM Unit # F5001	N/A	11	65	No	
N/A	8 - Roof, North	5/10/2008	12:00 AM	5/11/2008	12:00 AM	1,440	PM _{2.5}	Direct Read	Met One E-BAM Unit # E3364	N/A	20	65	No	

MasterWorks - 130 Cedar Building, Community Monitoring

Sample No.	Sampling Location	Collection Start Date	Collection (Time on)	Collection End Date	Collection (Time off)	Total Collection Time, minutes	Analysis	Analytical Method	Instrument	Lab Sample Receipt Date	PM ₁₀ Avg. Concentration (µg/m ³)	EPA Site Specific Trigger Factor for PM ₁₀ (µg/m ³)	Exceeds Target Air quality or EPA Site Specific Level?	Comments
N/A	3 - Courtyard, 2nd Floor Level	5/4/2008	12:00 AM	05/05/2008	12:00 AM	1,440	PM ₁₀	Direct Read	Met One E-BAM Unit # G4606	N/A	48	150	No	
N/A	4 - Albany St 6th Floor Level Scaffolding	5/4/2008	12:00 AM	05/05/2008	12:00 AM	1,440	PM ₁₀	Direct Read	Met One E-BAM Unit # G4731	N/A	46	150	No	
N/A	5 - Washington St 6th Floor Level Scaffolding	5/4/2008	12:00 AM	05/05/2008	12:00 AM	1,440	PM ₁₀	Direct Read	Met One E-BAM Unit # G4604	N/A	74	150	No	
N/A	6 - Cedar St 6th Floor Level Scaffolding	5/4/2008	12:00 AM	05/05/2008	12:00 AM	1,440	PM ₁₀	Direct Read	Met One E-BAM Unit # G4605	N/A	51	150	No	
N/A	7 - Roof, East	5/4/2008	12:00 AM	05/05/2008	12:00 AM	1,440	PM ₁₀	Direct Read	Met One E-BAM Unit # E3363	N/A	33	150	No	
N/A	8 - Roof, North	5/4/2008	12:00 AM	05/05/2008	12:00 AM	1,440	PM ₁₀	Direct Read	Met One E-BAM Unit # G4607	N/A	31	150	No	
N/A	3 - Courtyard, 2nd Floor Level	5/5/2008	12:00 AM	05/06/2008	12:00 AM	1,440	PM ₁₀	Direct Read	Met One E-BAM Unit # G4606	N/A	26	150	No	
N/A	4 - Albany St 6th Floor Level Scaffolding	5/5/2008	12:00 AM	05/06/2008	12:00 AM	1,440	PM ₁₀	Direct Read	Met One E-BAM Unit # G4731	N/A	25	150	No	
N/A	5 - Washington St 6th Floor Level Scaffolding	5/5/2008	12:00 AM	05/06/2008	12:00 AM	1,440	PM ₁₀	Direct Read	Met One E-BAM Unit # G4604	N/A	24	150	No	
N/A	6 - Cedar St 6th Floor Level Scaffolding	5/5/2008	12:00 AM	05/06/2008	12:00 AM	1,440	PM ₁₀	Direct Read	Met One E-BAM Unit # G4605	N/A	55	150	No	
N/A	7 - Roof, East	5/5/2008	12:00 AM	05/06/2008	12:00 AM	1,440	PM ₁₀	Direct Read	Met One E-BAM Unit # E3363	N/A	18	150	No	
N/A	8 - Roof, North	5/5/2008	12:00 AM	05/06/2008	12:00 AM	1,440	PM ₁₀	Direct Read	Met One E-BAM Unit # G4607	N/A	21	150	No	
N/A	3 - Courtyard, 2nd Floor Level	5/6/2008	12:00 AM	05/07/2008	12:00 AM	1,440	PM ₁₀	Direct Read	Met One E-BAM Unit # G4606	N/A	27	150	No	
N/A	4 - Albany St 6th Floor Level Scaffolding	5/6/2008	12:00 AM	05/07/2008	12:00 AM	1,440	PM ₁₀	Direct Read	Met One E-BAM Unit # G4731	N/A	25	150	No	
N/A	5 - Washington St 6th Floor Level Scaffolding	5/6/2008	12:00 AM	05/07/2008	12:00 AM	1,440	PM ₁₀	Direct Read	Met One E-BAM Unit # G4604	N/A	31	150	No	
N/A	6 - Cedar St 6th Floor Level Scaffolding	5/6/2008	12:00 AM	05/07/2008	12:00 AM	1,440	PM ₁₀	Direct Read	Met One E-BAM Unit # G4605	N/A	28	150	No	
N/A	7 - Roof, East	5/6/2008	12:00 AM	05/07/2008	12:00 AM	1,440	PM ₁₀	Direct Read	Met One E-BAM Unit # E3363	N/A	31	150	No	
N/A	8 - Roof, North	5/6/2008	12:00 AM	05/07/2008	12:00 AM	1,440	PM ₁₀	Direct Read	Met One E-BAM Unit # G4607	N/A	30	150	No	
N/A	3 - Courtyard, 2nd Floor Level	5/7/2008	12:00 AM	05/08/2008	12:00 AM	1,440	PM ₁₀	Direct Read	Met One E-BAM Unit # G4606	N/A	44	150	No	
N/A	4 - Albany St 6th Floor Level Scaffolding	5/7/2008	12:00 AM	05/08/2008	12:00 AM	1,440	PM ₁₀	Direct Read	Met One E-BAM Unit # G4731	N/A	28	150	No	
N/A	5 - Washington St 6th Floor Level Scaffolding	5/7/2008	12:00 AM	05/08/2008	12:00 AM	1,440	PM ₁₀	Direct Read	Met One E-BAM Unit # G4604	N/A	37	150	No	
N/A	6 - Cedar St 6th Floor Level Scaffolding	5/7/2008	12:00 AM	05/08/2008	12:00 AM	1,440	PM ₁₀	Direct Read	Met One E-BAM Unit # G4605	N/A	36	150	No	
N/A	7 - Roof, East	5/7/2008	12:00 AM	05/08/2008	12:00 AM	1,440	PM ₁₀	Direct Read	Met One E-BAM Unit # E3363	N/A	31	150	No	
N/A	8 - Roof, North	5/7/2008	12:00 AM	05/08/2008	12:00 AM	1,440	PM ₁₀	Direct Read	Met One E-BAM Unit # G4607	N/A	28	150	No	
N/A	3 - Courtyard, 2nd Floor Level	5/8/2008	12:00 AM	05/09/2008	12:00 AM	1,440	PM ₁₀	Direct Read	Met One E-BAM Unit # G4606	N/A	40	150	No	
N/A	4 - Albany St 6th Floor Level Scaffolding	5/8/2008	12:00 AM	05/09/2008	12:00 AM	1,440	PM ₁₀	Direct Read	Met One E-BAM Unit # G4731	N/A	34	150	No	
N/A	5 - Washington St 6th Floor Level Scaffolding	5/8/2008	12:00 AM	05/09/2008	12:00 AM	1,440	PM ₁₀	Direct Read	Met One E-BAM Unit # G4604	N/A	36	150	No	
N/A	6 - Cedar St 6th Floor Level Scaffolding	5/8/2008	12:00 AM	05/09/2008	12:00 AM	1,440	PM ₁₀	Direct Read	Met One E-BAM Unit # G4605	N/A	33	150	No	
N/A	7 - Roof, East	5/8/2008	12:00 AM	05/09/2008	12:00 AM	1,440	PM ₁₀	Direct Read	Met One E-BAM Unit # E3363	N/A	48	150	No	
N/A	8 - Roof, North	5/8/2008	12:00 AM	05/09/2008	12:00 AM	1,440	PM ₁₀	Direct Read	Met One E-BAM Unit # G4607	N/A	33	150	No	
N/A	3 - Courtyard, 2nd Floor Level	5/9/2008	12:00 AM	05/10/2008	12:00 AM	1,440	PM ₁₀	Direct Read	Met One E-BAM Unit # G4606	N/A	19	150	No	
N/A	4 - Albany St 6th Floor Level Scaffolding	5/9/2008	12:00 AM	05/10/2008	12:00 AM	1,440	PM ₁₀	Direct Read	Met One E-BAM Unit # G4731	N/A	23	150	No	
N/A	5 - Washington St 6th Floor Level Scaffolding	5/9/2008	12:00 AM	05/10/2008	12:00 AM	1,440	PM ₁₀	Direct Read	Met One E-BAM Unit # G4604	N/A	75	150	No	
N/A	6 - Cedar St 6th Floor Level Scaffolding	5/9/2008	12:00 AM	05/10/2008	12:00 AM	1,440	PM ₁₀	Direct Read	Met One E-BAM Unit # G4605	N/A	59	150	No	
N/A	7 - Roof, East	5/9/2008	12:00 AM	05/10/2008	12:00 AM	1,440	PM ₁₀	Direct Read	Met One E-BAM Unit # E3363	N/A	38	150	No	
N/A	8 - Roof, North	5/9/2008	12:00 AM	05/10/2008	12:00 AM	1,440	PM ₁₀	Direct Read	Met One E-BAM Unit # G4607	N/A	35	150	No	
N/A	3 - Courtyard, 2nd Floor Level	5/10/2008	12:00 AM	05/11/2008	12:00 AM	1,440	PM ₁₀	Direct Read	Met One E-BAM Unit # G4606	N/A	10	150	No	
N/A	4 - Albany St 6th Floor Level Scaffolding	5/10/2008	12:00 AM	05/11/2008	12:00 AM	1,440	PM ₁₀	Direct Read	Met One E-BAM Unit # G4731	N/A	25	150	No	
N/A	5 - Washington St 6th Floor Level Scaffolding	5/10/2008	12:00 AM	05/11/2008	12:00 AM	1,440	PM ₁₀	Direct Read	Met One E-BAM Unit # G4604	N/A	12	150	No	
N/A	6 - Cedar St 6th Floor Level Scaffolding	5/10/2008	12:00 AM	05/11/2008	12:00 AM	1,440	PM ₁₀	Direct Read	Met One E-BAM Unit # G4605	N/A	13	150	No	
N/A	7 - Roof, East	5/10/2008	12:00 AM	5/11/2008	12:00 AM	1,440	PM ₁₀	Direct Read	Met One E-BAM Unit # E3363	N/A	25	150	No	
N/A	8 - Roof, North	5/10/2008	12:00 AM	5/11/2008	12:00 AM	1,440	PM ₁₀	Direct Read	Met One E-BAM Unit # G4607	N/A	15	150	No	

350 Hochberg Road, Monroeville, PA 15146
Phone: (724) 325-1776 Fax: (724) 733-1799

Mercury Vapor (Hg^0) Air Results for Outdoor Community
Monitoring Stations by Location as recorded by the Lumex Analyzer



Report Summary

Air Mercury Results (Hg⁰, ng/m³) as recorded by the Lumex RA915+ analyzer
Week of 05/04/08 to 05/10/08

Date	Mercury (Hg ⁰) ng/m ³ 30-sec readings	1 Southeast corner sidewalk bridge	2 Northeast corner sidewalk bridge	3 Courtyard 2nd floor level	4 Albany Street 6th floor scaffolding	5 Washington Street 6th floor scaffolding	6 Cedar Street 6th floor scaffolding	7 Roof Washington Street façade	8 Roof Cedar Street façade
4-May-08	# Samples	9	9	9	9	9	9	9	9
	Average	7	6	5	15	10	5	14	7
	Maximum	8	7	6	15	12	6	18	9
5-May-08	# Samples	36	36	36	33	36	36	36	54
	Average	3	6	6	3	9	6	5	24
	Maximum	6	15	21	5	20	16	8	57
6-May-08	# Samples	54	54	54	54	54	54	54	54
	Average	7	7	7	5	5	5	9	26
	Maximum	12	14	15	9	9	8	25	56
7-May-08	# Samples	36	36	36	36	39	36	39	36
	Average	4	8	11	6	6	5	8	8
	Maximum	9	29	35	18	9	8	15	18
8-May-08	# Samples	36	36	36	36	36	36	36	36
	Average	7	7	7	5	6	6	12	6
	Maximum	14	9	19	9	8	9	19	8
9-May-08	# Samples	36	36	36	36	36	36	36	36
	Average	4	3	5	5	3	5	5	3
	Maximum	7	7	7	9	5	10	8	7
10-May-08	# Samples	9	9	9	9	9	9	9	9
	Average	3	6	10	5	4	3	15	10
	Maximum	5	7	11	6	5	4	19	11
11-May-08	# Samples	9	9	9	9	9	9	9	9
	Average	8	2	3	10	3	2	5	2
	Maximum	9	2	5	13	4	3	7	2