

Sample No.	Sampling Location	Collection Start Date	Collection (Time on)	Collection End Date	Collection (Time off)	Total collection time, minutes	Sample Volume (liters)	Analysis	Analytical Method	Lab	Lab Sample Receipt Date	Target Air Quality Levels											Exceeds Target Air Quality Levels	Exceeds EPA Site Specific Trigger Levels	Comments		
												Barium Concentration (µg/m³)	Chromium Concentration (µg/m³)	Manganese Concentration (µg/m³)	Zinc Concentration (µg/m³)	Beryllium Concentration (µg/m³)	Copper Concentration (µg/m³)	Mercury Particulate (µg/m³)	Calcium Concentration (µg/m³)	Lead Concentration (µg/m³)	Nickel Concentration (µg/m³)	Antimony Concentration (µg/m³)				5.00	0.60
5279261	3 - 90 West Courtyard at 2nd Floor Level	5/1/2008	8:24 AM	5/12/2008	6:43 AM	1,330	4,687	Metals	NIOSH 7300 Modified ICP-AES	RJLG Metals	5/1/2008	0.027	0.061	0.012	0.12	0.02	0.0021	0.024	< 0.0021	< 0.0021	< 0.0021	0.010	0.009	< 0.013	No	No	
5279265	4 - Albany St 6th Floor Scalloping	5/1/2008	9:07 AM	5/12/2008	7:16 AM	1,291	4,883	Metals	NIOSH 7300 Modified ICP-AES	RJLG Metals	5/1/2008	0.040	0.051	0.010	0.18	0.02	0.0021	0.023	< 0.0021	< 0.0021	< 0.0021	0.042	0.019	< 0.012	No	No	
5279273	5 - Washington St 6th Floor Scalloping	5/1/2008	7:45 AM	5/12/2008	7:52 AM	1,447	4,992	Metals	NIOSH 7300 Modified ICP-AES	RJLG Metals	5/1/2008	0.052	0.043	0.024	0.14	< 0.0020	0.022	< 0.0020	< 0.0020	< 0.0020	< 0.0020	0.067	0.012	< 0.012	No	No	
5279277	8 - Cedar St 6th Floor Scalloping	5/1/2008	7:29 AM	5/12/2008	8:17 AM	1,488	5,134	Metals	NIOSH 7300 Modified ICP-AES	RJLG Metals	5/1/2008	0.016	< 0.039	0.012	0.10	< 0.0020	0.016	< 0.0020	< 0.0020	< 0.0020	< 0.0020	0.068	0.009	< 0.012	No	No	
5279281	7 - Roof, East Facade	5/1/2008	7:26 AM	5/12/2008	7:26 AM	1,439	4,944	Metals	NIOSH 7300 Modified ICP-AES	RJLG Metals	5/1/2008	0.018	< 0.040	0.011	0.12	< 0.0020	0.016	< 0.0020	< 0.0020	< 0.0020	< 0.0020	0.010	0.008	< 0.012	No	No	
5279285	8 - Roof, North Facade	5/1/2008	7:40 AM	5/12/2008	7:34 AM	1,434	5,029	Metals	NIOSH 7300 Modified ICP-AES	RJLG Metals	5/1/2008	0.016	0.062	0.010	0.12	< 0.0020	0.017	< 0.0020	< 0.0020	< 0.0020	< 0.0020	0.012	0.012	< 0.012	No	No	
5279121	3 - 90 West Courtyard at 2nd Floor Level	5/12/2008	6:50 AM	5/12/2008	7:16 AM	1,466	5,058	Metals	NIOSH 7300 Modified ICP-AES	RJLG Metals	5/12/2008	0.078	0.073	0.027	0.10	< 0.0020	0.021	< 0.0020	< 0.0020	< 0.0020	< 0.0020	0.052	0.013	< 0.012	No	No	
5279125	4 - Albany St 6th Floor Scalloping	5/12/2008	7:25 AM	5/12/2008	8:10 AM	1,485	5,346	Metals	NIOSH 7300 Modified ICP-AES	RJLG Metals	5/12/2008	0.020	< 0.037	0.014	0.12	< 0.0019	0.022	< 0.0019	< 0.0019	< 0.0019	< 0.0019	0.010	0.020	< 0.011	No	No	
5279129	5 - Washington St 6th Floor Scalloping	5/12/2008	7:58 AM	5/12/2008	8:17 AM	1,459	5,107	Metals	NIOSH 7300 Modified ICP-AES	RJLG Metals	5/12/2008	0.012	< 0.039	0.009	0.11	< 0.0020	0.136	< 0.0020	< 0.0020	< 0.0020	< 0.0020	0.038	0.008	< 0.012	No	No	
5279133	8 - Cedar St 6th Floor Scalloping	5/12/2008	6:23 AM	5/12/2008	7:31 AM	1,386	4,977	Metals	NIOSH 7300 Modified ICP-AES	RJLG Metals	5/12/2008	0.017	0.065	0.013	0.11	< 0.0020	0.016	< 0.0020	< 0.0020	< 0.0020	< 0.0020	0.011	0.011	< 0.012	No	No	
5279137	7 - Roof, East Facade	5/12/2008	7:30 AM	5/12/2008	8:42 AM	1,392	4,876	Metals	NIOSH 7300 Modified ICP-AES	RJLG Metals	5/12/2008	0.011	< 0.041	< 0.008	0.10	< 0.0021	0.032	< 0.0021	< 0.0021	< 0.0021	< 0.0021	0.008	0.008	< 0.012	No	No	
5279141	8 - Roof, North Facade	5/12/2008	7:38 AM	5/12/2008	7:12 AM	1,414	6,003	Metals	NIOSH 7300 Modified ICP-AES	RJLG Metals	5/12/2008	0.017	< 0.040	0.013	0.12	< 0.0020	0.014	< 0.0020	< 0.0020	< 0.0020	< 0.0020	0.010	0.011	< 0.012	No	No	
5279149	3 - 90 West Courtyard at 2nd Floor Level	5/12/2008	7:18 AM	5/12/2008	7:13 AM	1,435	5,023	Metals	NIOSH 7300 Modified ICP-AES	RJLG Metals	5/12/2008	0.028	< 0.040	0.020	0.15	< 0.0020	0.046	< 0.0020	< 0.0020	< 0.0020	< 0.0020	0.025	0.011	< 0.012	No	No	
5279153	4 - Albany St 6th Floor Scalloping	5/12/2008	8:12 AM	5/12/2008	7:44 AM	1,412	4,942	Metals	NIOSH 7300 Modified ICP-AES	RJLG Metals	5/12/2008	0.037	0.041	0.024	0.15	< 0.0020	0.042	< 0.0020	< 0.0020	< 0.0020	< 0.0020	0.023	0.013	< 0.012	No	No	
5279157	5 - Washington St 6th Floor Scalloping	5/12/2008	8:19 AM	5/12/2008	7:52 AM	1,413	4,946	Metals	NIOSH 7300 Modified ICP-AES	RJLG Metals	5/12/2008	0.024	0.064	0.017	0.12	< 0.0020	0.026	< 0.0020	< 0.0020	< 0.0020	< 0.0020	0.023	0.011	< 0.012	No	No	
5279161	8 - Cedar St 6th Floor Scalloping	5/12/2008	7:33 AM	5/12/2008	7:33 AM	1,440	5,154	Metals	NIOSH 7300 Modified ICP-AES	RJLG Metals	5/12/2008	0.022	0.064	0.016	0.07	< 0.0019	0.024	< 0.0019	< 0.0019	< 0.0019	< 0.0019	0.008	0.010	< 0.012	No	No	
5279161	6 - Cedar St 6th Floor Scalloping	5/12/2008	7:38 AM	5/12/2008	7:25 AM	1,427	5,209	Metals	NIOSH 7300 Modified ICP-AES	RJLG Metals	5/12/2008	0.027	< 0.038	0.021	0.13	< 0.0019	0.043	< 0.0019	< 0.0019	< 0.0019	< 0.0019	0.010	0.016	< 0.012	No	No	
5279165	7 - Roof, East Facade	5/12/2008	6:50 AM	5/12/2008	8:40 AM	1,590	5,681	Metals	NIOSH 7300 Modified ICP-AES	RJLG Metals	5/12/2008	0.032	0.041	0.029	0.12	< 0.0018	0.072	< 0.0018	< 0.0018	< 0.0018	< 0.0018	0.019	0.015	< 0.011	No	No	
5279169	8 - Roof, North Facade	5/12/2008	7:19 AM	5/12/2008	8:30 AM	1,511	5,448	Metals	NIOSH 7300 Modified ICP-AES	RJLG Metals	5/12/2008	0.039	0.037	0.021	0.15	< 0.0018	0.104	< 0.0018	< 0.0018	< 0.0018	< 0.0018	0.050	0.019	< 0.011	No	No	
5279177	3 - 90 West Courtyard at 2nd Floor Level	5/12/2008	7:15 AM	5/12/2008	7:32 AM	1,427	5,137	Metals	NIOSH 7300 Modified ICP-AES	RJLG Metals	5/12/2008	0.072	0.141	0.059	0.14	< 0.0020	0.097	< 0.0020	< 0.0020	< 0.0020	< 0.0020	0.713	0.027	< 0.012	No	No	
5279181	4 - Albany St 6th Floor Scalloping	5/12/2008	7:46 AM	5/12/2008	7:27 AM	1,421	4,918	Metals	NIOSH 7300 Modified ICP-AES	RJLG Metals	5/12/2008	0.016	0.047	0.008	0.16	< 0.0020	0.047	< 0.0020	< 0.0020	< 0.0020	< 0.0020	0.077	0.018	< 0.012	No	No	
5279185	5 - Washington St 6th Floor Scalloping	5/12/2008	7:54 AM	5/12/2008	7:37 AM	1,423	4,981	Metals	NIOSH 7300 Modified ICP-AES	RJLG Metals	5/12/2008	0.054	< 0.040	0.029	0.17	< 0.0020	0.050	< 0.0020	< 0.0020	< 0.0020	< 0.0020	0.096	0.051	< 0.012	No	No	
5279189	8 - Cedar St 6th Floor Scalloping	5/12/2008	7:35 AM	5/12/2008	7:15 AM	1,420	4,970	Metals	NIOSH 7300 Modified ICP-AES	RJLG Metals	5/12/2008	0.032	0.098	0.015	0.12	< 0.0020	0.028	< 0.0020	< 0.0020	< 0.0020	< 0.0020	0.051	0.008	< 0.012	No	No	
5279193	7 - Roof, East Facade	5/12/2008	8:45 AM	5/12/2008	7:27 AM	1,362	4,864	Metals	NIOSH 7300 Modified ICP-AES	RJLG Metals	5/12/2008	0.048	0.071	0.030	0.14	< 0.0021	0.054	< 0.0021	< 0.0021	< 0.0021	< 0.0021	0.326	0.019	< 0.012	No	No	
5279197	8 - Roof, North Facade	5/12/2008	8:38 AM	5/12/2008	7:45 AM	1,390	4,886	Metals	NIOSH 7300 Modified ICP-AES	RJLG Metals	5/12/2008	0.066	0.050	0.060	0.17	< 0.0021	0.114	< 0.0021	< 0.0021	< 0.0021	< 0.0021	1.470	0.028	0.013	No	No	
5279205	3 - 90 West Courtyard at 2nd Floor Level	5/12/2008	7:58 AM	5/12/2008	6:50 AM	1,422	4,977	Metals	NIOSH 7300 Modified ICP-AES	RJLG Metals	5/12/2008	0.086	< 0.040	0.024	0.21	< 0.0020	0.044	< 0.0020	< 0.0020	< 0.0020	< 0.0020	0.071	0.020	< 0.012	No	No	
5279209	4 - Albany St 6th Floor Scalloping	5/12/2008	7:31 AM	5/12/2008	7:33 AM	1,412	4,942	Metals	NIOSH 7300 Modified ICP-AES	RJLG Metals	5/12/2008	0.019	0.029	0.020	0.20	< 0.0020	0.060	< 0.0020	< 0.0020	< 0.0020	< 0.0020	0.043	0.009	< 0.012	No	No	
5279213	5 - Washington St 6th Floor Scalloping	5/12/2008	7:41 AM	5/12/2008	7:14 AM	1,413	4,946	Metals	NIOSH 7300 Modified ICP-AES	RJLG Metals	5/12/2008	0.061	< 0.040	0.029	0.19	< 0.0020	0.056	< 0.0020	< 0.0020	< 0.0020	< 0.0020	0.066	0.023	0.015	No	No	
5279217	8 - Cedar St 6th Floor Scalloping	5/12/2008	7:29 AM	5/12/2008	7:25 AM	1,448	5,058	Metals	NIOSH 7300 Modified ICP-AES	RJLG Metals	5/12/2008	0.014	< 0.040	0.008	0.12	< 0.0020	0.059	< 0.0020	< 0.0020	< 0.0020	< 0.0020	0.037	0.009	< 0.012	No	No	
5279221	7 - Roof, East Facade	5/12/2008	8:37 AM	5/12/2008	7:31 AM	1,374	4,953	Metals	NIOSH 7300 Modified ICP-AES	RJLG Metals	5/12/2008	0.052	< 0.040	0.037	0.22	< 0.0020	0.125	< 0.0020	< 0.0020	< 0.0020	< 0.0020	1.000	0.039	0.015	No	No	
5279225	8 - Roof, North Facade	5/12/2008	7:50 AM	5/12/2008	7:35 AM	1,445	5,045	Metals	NIOSH 7300 Modified ICP-AES	RJLG Metals	5/12/2008	0.073	< 0.040	0.030	0.20	< 0.0020	0.081	< 0.0020	< 0.0020	< 0.0020	< 0.0020	0.209	0.027	< 0.012	No	No	
5279233	3 - 90 West Courtyard at 2nd Floor Level	5/12/2008	8:56 AM	5/12/2008	7:48 AM	1,480	5,143	Metals	NIOSH 7300 Modified ICP-AES	RJLG Metals	5/12/2008	0.017	0.040	0.010	0.12	< 0.0020	0.017	< 0.0020	< 0.0020	< 0.0020	< 0.0020	0.017	0.008	< 0.012	No	No	
5279237	4 - Albany St 6th Floor Scalloping	5/12/2008	7:57 AM	5/12/2008	7:55 AM	1,488	5,134	Metals	NIOSH 7300 Modified ICP-AES	RJLG Metals	5/12/2008	0.018	< 0.040	0.010	0.13	< 0.0020	0.016	< 0.0020	< 0.0020	< 0.0020	< 0.0020	0.014	0.018	< 0.012	No	No	
5279241	5 - Washington St 6th Floor Scalloping	5/12/2008	7:18 AM	5/12/2008	8:33 AM	1,485	5,198	Metals	NIOSH 7300 Modified ICP-AES	RJLG Metals	5/12/2008	0.017	0.042	0.012	0.12	< 0.0019	0.018	< 0.0019	< 0.0019	< 0.0019	< 0.0019	0.012	0.008	< 0.012	No	No	
5279245	6 - Cedar St 6th Floor Scalloping	5/12/2008	7:31 AM	5/12/2008	8:12 AM	1,481	5,164	Metals	NIOSH 7300 Modified ICP-AES	RJLG Metals	5/12/2008	0.019	0.039	0.009	0.10												

MasterWorks - 130 Cedar Building, Community Monitoring

Sample No.	Sampling Location	Collection Start Date	Collection (Time on)	Collection End Date	Collection (Time off)	Total Collection Time, minutes	Volume (liters)	Analysis	Analytical Method	Lab	Lab Sample Date	Mercury Concentration (ng/m ³)	EPA Site Specific Trigger Level for Mercury (ng/m ³)	Exceeds Target Air quality or EPA Site Specific Quality?	Comments
5279264	3 - 90 West Courtyard at 2nd Floor Level	5/11/2008	8:24 AM	5/12/2008	6:43 AM	1,339	542	Mercury	EPA 324/1631 mod.	BRL	05/13/2008	< 6	3,000	No	
5279268	4 - Albany St 6th Floor Scaffolding	5/11/2008	8:01 AM	5/12/2008	7:16 AM	1,395	530	Mercury	EPA 324/1631 mod.	BRL	05/13/2008	< 6	3,000	No	
5279276	5 - Washington St 6th Floor Scaffolding	5/11/2008	7:45 AM	5/12/2008	7:52 AM	1,447	579	Mercury	EPA 324/1631 mod.	BRL	05/13/2008	< 5	3,000	No	
5279280	6 - Cedar St 6th Floor Scaffolding	5/11/2008	7:29 AM	5/12/2008	8:17 AM	1,488	573	Mercury	EPA 324/1631 mod.	BRL	05/13/2008	< 5	3,000	No	
5279284	7 - Roof, East Facade	5/11/2008	7:26 AM	5/12/2008	7:25 AM	1,439	518	Mercury	EPA 324/1631 mod.	BRL	05/13/2008	< 6	3,000	No	
5279288	8 - Roof, North Facade	5/11/2008	7:40 AM	5/12/2008	7:34 AM	1,434	531	Mercury	EPA 324/1631 mod.	BRL	05/13/2008	< 6	3,000	No	
5279124	3 - 90 West Courtyard at 2nd Floor Level	5/12/2008	6:50 AM	5/13/2008	7:16 AM	1,466	586	Mercury	EPA 324/1631 mod.	BRL	05/14/2008	< 5	3,000	No	
5279128	4 - Albany St 6th Floor Scaffolding	5/12/2008	7:25 AM	5/13/2008	8:26 AM	1,501	600	Mercury	EPA 324/1631 mod.	BRL	05/14/2008	< 5	3,000	No	
5279132	5 - Washington St 6th Floor Scaffolding	5/12/2008	7:58 AM	5/13/2008	8:17 AM	1,459	584	Mercury	EPA 324/1631 mod.	BRL	05/14/2008	< 5	3,000	No	
5279136	6 - Cedar St 6th Floor Scaffolding	5/12/2008	8:23 AM	5/13/2008	7:31 AM	1,388	555	Mercury	EPA 324/1631 mod.	BRL	05/14/2008	< 6	3,000	No	
5279140	7 - Roof, East Facade	5/12/2008	7:30 AM	5/13/2008	6:20 AM	1,370	514	Mercury	EPA 324/1631 mod.	BRL	05/14/2008	< 6	3,000	No	
5279144	8 - Roof, North Facade	5/12/2008	7:38 AM	5/13/2008	7:12 AM	1,414	569	Mercury	EPA 324/1631 mod.	BRL	05/14/2008	< 6	3,000	No	
5279152	3 - 90 West Courtyard at 2nd Floor Level	5/13/2008	7:18 AM	5/14/2008	7:13 AM	1,435	574	Mercury	EPA 324/1631 mod.	BRL	05/15/2008	11	3,000	No	
5279156	4 - Albany St 6th Floor Scaffolding	5/13/2008	8:26 AM	5/14/2008	7:44 AM	1,398	573	Mercury	EPA 324/1631 mod.	BRL	05/15/2008	< 5	3,000	No	
5279160	5 - Washington St 6th Floor Scaffolding	5/13/2008	8:19 AM	5/14/2008	7:52 AM	1,413	565	Mercury	EPA 324/1631 mod.	BRL	05/15/2008	< 5	3,000	No	
5279164	6 - Cedar St 6th Floor Scaffolding	5/13/2008	7:33 AM	5/14/2008	7:33 AM	1,440	576	Mercury	EPA 324/1631 mod.	BRL	05/15/2008	6	3,000	No	
5278394	6 - Cedar St 6th Floor Scaffolding	5/13/2008	7:38 AM	5/14/2008	7:25 AM	1,427	557	Mercury	EPA 324/1631 mod.	BRL	05/15/2008	< 6	3,000	No	
5279168	7 - Roof, East Facade	5/13/2008	6:50 AM	5/14/2008	8:40 AM	1,550	558	Mercury	EPA 324/1631 mod.	BRL	05/15/2008	8	3,000	No	
5279172	8 - Roof, North Facade	5/13/2008	7:19 AM	5/14/2008	8:30 AM	1,511	574	Mercury	EPA 324/1631 mod.	BRL	05/15/2008	7	3,000	No	
5279180	3 - 90 West Courtyard at 2nd Floor Level	5/14/2008	7:15 AM	5/15/2008	7:02 AM	1,427	564	Mercury	EPA 324/1631 mod.	BRL	05/16/2008	< 5	3,000	No	
5279184	4 - Albany St 6th Floor Scaffolding	5/14/2008	7:46 AM	5/15/2008	7:27 AM	1,421	576	Mercury	EPA 324/1631 mod.	BRL	05/16/2008	< 5	3,000	No	
5279188	5 - Washington St 6th Floor Scaffolding	5/14/2008	7:54 AM	5/15/2008	7:37 AM	1,423	569	Mercury	EPA 324/1631 mod.	BRL	05/16/2008	< 5	3,000	No	
5279192	6 - Cedar St 6th Floor Scaffolding	5/14/2008	7:35 AM	5/15/2008	7:15 AM	1,420	547	Mercury	EPA 324/1631 mod.	BRL	05/16/2008	< 6	3,000	No	
5279196	7 - Roof, East Facade	5/14/2008	8:45 AM	5/15/2008	7:27 AM	1,362	273	Mercury	EPA 324/1631 mod.	BRL	05/16/2008	< 11	3,000	No	Estimated volume - pump flow fault.
5279200	8 - Roof, North Facade	5/14/2008	8:35 AM	5/15/2008	7:45 AM	1,390	487	Mercury	EPA 324/1631 mod.	BRL	05/16/2008	< 6	3,000	No	
5279208	3 - 90 West Courtyard at 2nd Floor Level	5/15/2008	7:08 AM	5/16/2008	6:50 AM	1,422	569	Mercury	EPA 324/1631 mod.	BRL	05/19/2008	< 5	3,000	No	
5279212	4 - Albany St 6th Floor Scaffolding	5/15/2008	7:31 AM	5/16/2008	7:03 AM	1,412	565	Mercury	EPA 324/1631 mod.	BRL	05/19/2008	< 5	3,000	No	
5279216	5 - Washington St 6th Floor Scaffolding	5/15/2008	7:41 AM	5/16/2008	7:14 AM	1,413	558	Mercury	EPA 324/1631 mod.	BRL	05/19/2008	< 6	3,000	No	
5279220	6 - Cedar St 6th Floor Scaffolding	5/15/2008	7:20 AM	5/16/2008	7:25 AM	1,445	556	Mercury	EPA 324/1631 mod.	BRL	05/19/2008	< 6	3,000	No	
5279224	7 - Roof, East Facade	5/15/2008	7:37 AM	5/16/2008	7:37 AM	1,440	547	Mercury	EPA 324/1631 mod.	BRL	05/19/2008	< 6	3,000	No	
5279228	8 - Roof, North Facade	5/15/2008	7:50 AM	5/16/2008	7:55 AM	1,445	564	Mercury	EPA 324/1631 mod.	BRL	05/19/2008	< 5	3,000	No	
5279236	3 - 90 West Courtyard at 2nd Floor Level	5/16/2008	6:55 AM	5/17/2008	7:45 AM	1,490	589	Mercury	EPA 324/1631 mod.	BRL	05/19/2008	< 5	3,000	No	
5279240	4 - Albany St 6th Floor Scaffolding	5/16/2008	7:07 AM	5/17/2008	7:55 AM	1,488	603	Mercury	EPA 324/1631 mod.	BRL	05/19/2008	< 5	3,000	No	
5279244	5 - Washington St 6th Floor Scaffolding	5/16/2008	7:18 AM	5/17/2008	8:03 AM	1,485	594	Mercury	EPA 324/1631 mod.	BRL	05/19/2008	< 5	3,000	No	
5279248	6 - Cedar St 6th Floor Scaffolding	5/16/2008	7:31 AM	5/17/2008	8:12 AM	1,481	585	Mercury	EPA 324/1631 mod.	BRL	05/19/2008	< 5	3,000	No	
5279252	7 - Roof, East Facade	5/16/2008	7:44 AM	5/17/2008	2:58 AM	1,154	450	Mercury	EPA 324/1631 mod.	BRL	05/19/2008	< 7	3,000	No	Estimated volume - pump flow fault.
5279256	8 - Roof, North Facade	5/16/2008	8:33 AM	5/17/2008	8:19 AM	1,426	535	Mercury	EPA 324/1631 mod.	BRL	05/19/2008	< 6	3,000	No	
5279260	3 - 90 West Courtyard at 2nd Floor Level	5/17/2008	7:50 AM	5/18/2008	7:11 AM	1,401	560	Mercury	EPA 324/1631 mod.	BRL	05/20/2008	< 5	3,000	No	
5279264	4 - Albany St 6th Floor Scaffolding	5/17/2008	8:00 AM	5/18/2008	7:22 AM	1,402	568	Mercury	EPA 324/1631 mod.	BRL	05/20/2008	< 5	3,000	No	
5279268	5 - Washington St 6th Floor Scaffolding	5/17/2008	8:07 AM	5/18/2008	7:30 AM	1,403	568	Mercury	EPA 324/1631 mod.	BRL	05/20/2008	< 5	3,000	No	
5274958	6 - Cedar St 6th Floor Scaffolding	5/17/2008	8:16 AM	5/18/2008	7:39 AM	1,403	540	Mercury	EPA 324/1631 mod.	BRL	05/20/2008	< 6	3,000	No	
5274962	7 - Roof, East Facade	5/17/2008	7:45 AM	5/18/2008	7:26 AM	1,421	540	Mercury	EPA 324/1631 mod.	BRL	05/20/2008	< 6	3,000	No	
5274966	8 - Roof, North Facade	5/17/2008	8:26 AM	5/18/2008	7:39 AM	1,394	558	Mercury	EPA 324/1631 mod.	BRL	05/20/2008	< 6	3,000	No	

MasterWorks - 130 Cedar Building, Community Monitoring

Sample No.	Sampling Location	Collection Start Date	Collection (Time on)	Collection End Date	Collection (Time off)	Total Collection Time, minutes	Volume (liters)	Analysis	Analytical Method	Lab	Lab Sample Receipt Date	Asbestos Concentration (f/cc)	MMVF Concentration (f/cc)	EPA Site Specific Trigger Level	Exceeds EPA Site Specific Trigger Level?	Comments
5279263	3 - 90 West Courtyard at 2nd Floor Level	5/11/2008	8:24 AM	5/12/2008	6:43 AM	1,339	4,017	Asbestos PCME fibers	ISO 14966 mod	RJLG SEM	5/13/2008	<0.00005	<0.00005	0.0009 f/cc	No	
5279267	4 - Albany St 6th Floor Scaffolding	5/11/2008	8:01 AM	5/12/2008	7:16 AM	1,395	4,011	Asbestos PCME fibers	ISO 14966 mod	RJLG SEM	5/13/2008	<0.00005	<0.00005	0.0009 f/cc	No	
5279275	5 - Washington St 6th Floor Scaffolding	5/11/2008	7:45 AM	5/12/2008	7:52 AM	1,447	4,233	Asbestos PCME fibers	ISO 14966 mod	RJLG SEM	5/13/2008	0.00005	0.00005	0.0009 f/cc	No	
5279279	6 - Cedar St 6th Floor Scaffolding	5/11/2008	7:29 AM	5/12/2008	8:17 AM	1,488	4,315	Asbestos PCME fibers	ISO 14966 mod	RJLG SEM	5/13/2008	<0.00005	<0.00005	0.0009 f/cc	No	
5279283	7 - Roof, East Facade	5/11/2008	7:26 AM	5/12/2008	7:25 AM	1,439	4,257	Asbestos PCME fibers	ISO 14966 mod	RJLG SEM	5/13/2008	<0.00005	<0.00005	0.0009 f/cc	No	
5279287	8 - Roof, North Facade	5/11/2008	7:40 AM	5/12/2008	7:34 AM	1,434	4,368	Asbestos PCME fibers	ISO 14966 mod	RJLG SEM	5/13/2008	<0.00005	<0.00005	0.0009 f/cc	No	
5279123	3 - 90 West Courtyard at 2nd Floor Level	5/12/2008	6:50 AM	5/13/2008	7:16 AM	1,466	4,398	Asbestos PCME fibers	ISO 14966 mod	RJLG SEM	5/14/2008	<0.00005	<0.00005	0.0009 f/cc	No	
5279127	4 - Albany St 6th Floor Scaffolding	5/12/2008	7:25 AM	5/13/2008	8:10 AM	1,485	4,529	Asbestos PCME fibers	ISO 14966 mod	RJLG SEM	5/14/2008	<0.00004	<0.00004	0.0009 f/cc	No	
5279131	5 - Washington St 6th Floor Scaffolding	5/12/2008	7:58 AM	5/13/2008	8:17 AM	1,459	4,450	Asbestos PCME fibers	ISO 14966 mod	RJLG SEM	5/14/2008	<0.00005	0.00005	0.0009 f/cc	No	
5279135	6 - Cedar St 6th Floor Scaffolding	5/12/2008	8:23 AM	5/13/2008	7:31 AM	1,388	4,233	Asbestos PCME fibers	ISO 14966 mod	RJLG SEM	5/14/2008	<0.00005	0.00005	0.0009 f/cc	No	
5279139	7 - Roof, East Facade	5/12/2008	7:30 AM	5/13/2008	6:42 AM	1,392	4,258	Asbestos PCME fibers	ISO 14966 mod	RJLG SEM	5/14/2008	<0.00005	<0.00005	0.0009 f/cc	No	
5279143	8 - Roof, North Facade	5/12/2008	7:38 AM	5/13/2008	7:12 AM	1,414	4,298	Asbestos PCME fibers	ISO 14966 mod	RJLG SEM	5/14/2008	<0.00005	0.00005	0.0009 f/cc	No	
5279151	3 - 90 West Courtyard at 2nd Floor Level	5/13/2008	7:18 AM	5/14/2008	7:13 AM	1,435	4,377	Asbestos PCME fibers	ISO 14966 mod	RJLG SEM	5/15/2008	0.00005	0.00005	0.0009 f/cc	No	
5279155	4 - Albany St 6th Floor Scaffolding	5/13/2008	8:12 AM	5/14/2008	7:44 AM	1,412	4,307	Asbestos PCME fibers	ISO 14966 mod	RJLG SEM	5/15/2008	<0.00005	<0.00005	0.0009 f/cc	No	
5279159	5 - Washington St 6th Floor Scaffolding	5/13/2008	8:19 AM	5/14/2008	7:52 AM	1,413	4,310	Asbestos PCME fibers	ISO 14966 mod	RJLG SEM	5/15/2008	<0.00005	<0.00005	0.0009 f/cc	No	
5279163	6 - Cedar St 6th Floor Scaffolding	5/13/2008	7:33 AM	5/14/2008	7:33 AM	1,440	4,392	Asbestos PCME fibers	ISO 14966 mod	RJLG SEM	5/15/2008	<0.00005	<0.00005	0.0009 f/cc	No	
5278393	6 - Cedar St 6th Floor Scaffolding	5/13/2008	7:38 AM	5/14/2008	7:25 AM	1,427	4,495	Asbestos PCME fibers	ISO 14966 mod	RJLG SEM	5/15/2008	<0.00005	<0.00005	0.0009 f/cc	No	
5279167	7 - Roof, East Facade	5/13/2008	6:50 AM	5/14/2008	8:40 AM	1,550	4,817	Asbestos PCME fibers	ISO 14966 mod	RJLG SEM	5/15/2008	0.00004	<0.00004	0.0009 f/cc	No	
5279171	8 - Roof, North Facade	5/13/2008	7:19 AM	5/14/2008	8:30 AM	1,511	4,706	Asbestos PCME fibers	ISO 14966 mod	RJLG SEM	5/15/2008	<0.00004	<0.00004	0.0009 f/cc	No	
5279179	3 - 90 West Courtyard at 2nd Floor Level	5/14/2008	7:15 AM	5/15/2008	7:02 AM	1,427	4,281	Asbestos PCME fibers	ISO 14966 mod	RJLG SEM	5/16/2008	<0.00005	0.00005	0.0009 f/cc	No	
5279183	4 - Albany St 6th Floor Scaffolding	5/14/2008	7:46 AM	5/15/2008	7:27 AM	1,421	4,334	Asbestos PCME fibers	ISO 14966 mod	RJLG SEM	5/16/2008	<0.00005	<0.00005	0.0009 f/cc	No	
5279187	5 - Washington St 6th Floor Scaffolding	5/14/2008	7:54 AM	5/15/2008	7:37 AM	1,423	4,269	Asbestos PCME fibers	ISO 14966 mod	RJLG SEM	5/16/2008	0.00005	0.00005	0.0009 f/cc	No	
5279191	6 - Cedar St 6th Floor Scaffolding	5/14/2008	7:35 AM	5/15/2008	7:15 AM	1,420	4,260	Asbestos PCME fibers	ISO 14966 mod	RJLG SEM	5/16/2008	<0.00005	0.00005	0.0009 f/cc	No	
5279195	7 - Roof, East Facade	5/14/2008	8:45 AM	5/15/2008	7:27 AM	1,362	4,075	Asbestos PCME fibers	ISO 14966 mod	RJLG SEM	5/16/2008	<0.00005	<0.00005	0.0009 f/cc	No	
5279199	8 - Roof, North Facade	5/14/2008	8:35 AM	5/15/2008	7:45 AM	1,390	4,160	Asbestos PCME fibers	ISO 14966 mod	RJLG SEM	5/16/2008	0.00005	<0.00005	0.0009 f/cc	No	
5279207	3 - 90 West Courtyard at 2nd Floor Level	5/15/2008	7:08 AM	5/16/2008	6:50 AM	1,422	4,195	Asbestos PCME fibers	ISO 14966 mod	RJLG SEM	5/17/2008	<0.00005	<0.00005	0.0009 f/cc	No	
5279211	4 - Albany St 6th Floor Scaffolding	5/15/2008	7:31 AM	5/16/2008	7:03 AM	1,412	4,518	Asbestos PCME fibers	ISO 14966 mod	RJLG SEM	5/17/2008	<0.00004	<0.00004	0.0009 f/cc	No	
5279215	5 - Washington St 6th Floor Scaffolding	5/15/2008	7:41 AM	5/16/2008	7:14 AM	1,413	4,239	Asbestos PCME fibers	ISO 14966 mod	RJLG SEM	5/17/2008	<0.00005	<0.00005	0.0009 f/cc	No	
5279219	6 - Cedar St 6th Floor Scaffolding	5/15/2008	7:20 AM	5/16/2008	7:25 AM	1,445	4,335	Asbestos PCME fibers	ISO 14966 mod	RJLG SEM	5/17/2008	<0.00005	<0.00005	0.0009 f/cc	No	
5279223	7 - Roof, East Facade	5/15/2008	7:37 AM	5/16/2008	7:31 AM	1,434	4,382	Asbestos PCME fibers	ISO 14966 mod	RJLG SEM	5/17/2008	<0.00005	0.00005	0.0009 f/cc	No	
5279227	8 - Roof, North Facade	5/15/2008	7:50 AM	5/16/2008	7:55 AM	1,445	4,194	Asbestos PCME fibers	ISO 14966 mod	RJLG SEM	5/17/2008	<0.00005	<0.00005	0.0009 f/cc	No	
5279235	3 - 90 West Courtyard at 2nd Floor Level	5/16/2008	6:55 AM	5/17/2008	7:45 AM	1,490	4,321	Asbestos PCME fibers	ISO 14966 mod	RJLG SEM	5/19/2008	<0.00005	<0.00005	0.0009 f/cc	No	
5279239	4 - Albany St 6th Floor Scaffolding	5/16/2008	7:07 AM	5/17/2008	7:55 AM	1,488	4,390	Asbestos PCME fibers	ISO 14966 mod	RJLG SEM	5/19/2008	<0.00005	<0.00005	0.0009 f/cc	No	
5279243	5 - Washington St 6th Floor Scaffolding	5/16/2008	7:18 AM	5/17/2008	8:03 AM	1,485	4,455	Asbestos PCME fibers	ISO 14966 mod	RJLG SEM	5/19/2008	<0.00005	<0.00005	0.0009 f/cc	No	
5279247	6 - Cedar St 6th Floor Scaffolding	5/16/2008	7:31 AM	5/17/2008	8:12 AM	1,481	4,443	Asbestos PCME fibers	ISO 14966 mod	RJLG SEM	5/19/2008	<0.00005	<0.00005	0.0009 f/cc	No	
5279251	7 - Roof, East Facade	5/16/2008	7:44 AM	5/17/2008	7:40 AM	1,436	4,484	Asbestos PCME fibers	ISO 14966 mod	RJLG SEM	5/19/2008	0.00005	0.00005	0.0009 f/cc	No	
5279255	8 - Roof, North Facade	5/16/2008	8:33 AM	5/17/2008	8:21 AM	1,428	4,427	Asbestos PCME fibers	ISO 14966 mod	RJLG SEM	5/19/2008	<0.00005	<0.00005	0.0009 f/cc	No	
5279291	3 - 90 West Courtyard at 2nd Floor Level	5/17/2008	7:50 AM	5/18/2008	7:11 AM	1,401	4,203	Asbestos PCME fibers	ISO 14966 mod	RJLG SEM	5/20/2008	<0.00005	<0.00005	0.0009 f/cc	No	
5279295	4 - Albany St 6th Floor Scaffolding	5/17/2008	8:00 AM	5/18/2008	7:22 AM	1,402	4,136	Asbestos PCME fibers	ISO 14966 mod	RJLG SEM	5/20/2008	<0.00005	<0.00005	0.0009 f/cc	No	
5274949	5 - Washington St 6th Floor Scaffolding	5/17/2008	8:07 AM	5/18/2008	7:30 AM	1,403	4,209	Asbestos PCME fibers	ISO 14966 mod	RJLG SEM	5/20/2008	<0.00005	<0.00005	0.0009 f/cc	No	
5274957	6 - Cedar St 6th Floor Scaffolding	5/17/2008	8:16 AM	5/18/2008	7:39 AM	1,403	4,209	Asbestos PCME fibers	ISO 14966 mod	RJLG SEM	5/20/2008	<0.00005	<0.00005	0.0009 f/cc	No	
5274961	7 - Roof, East Facade	5/17/2008	7:45 AM	5/18/2008	7:26 AM	1,421	4,383	Asbestos PCME fibers	ISO 14966 mod	RJLG SEM	5/20/2008	<0.00005	<0.00005	0.0009 f/cc	No	
5274965	8 - Roof, North Facade	5/17/2008	8:25 AM	5/18/2008	7:39 AM	1,394	4,243	Asbestos PCME fibers	ISO 14966 mod	RJLG SEM	5/20/2008	<0.00005	<0.00005	0.0009 f/cc	No	

Sample No.	Sampling Location	Collection Start Date	Collection (Time on)	Collection End Date	Collection (Time off)	Total collection time, minutes	Sample Volume (liters)	Analyte	Analytical Method	Lab	Lab Sample Receipt Date	Respirable Dust Concentration (mg/m ³)	Respirable Quartz Concentration (mg/m ³)	Target Air quality Level for Respirable Quartz (mg/m ³)	EPA Site Specific Trigger Level for Respirable Quartz (mg/m ³)	Exceeds Target Air quality or EPA Site Specific Level?	Comments
5279262	3 - 90 West Courtyard at 2nd Floor Level	5/11/2008	8:24 AM	5/12/2008	6:43 AM	1,339	3,348	Dust and Quartz	NIOSH 0600/7500	RJLG XRD	5/13/2008	< 0.030	< 0.001	0.01	0.01	No	
5279266	4 - Albany St 6th Floor Scaffolding	5/11/2008	8:01 AM	5/12/2008	7:16 AM	1,395	3,597	Dust and Quartz	NIOSH 0600/7500	RJLG XRD	5/13/2008	< 0.028	< 0.001	0.01	0.01	No	
5279274	5 - Washington St 6th Floor Scaffolding	5/11/2008	7:45 AM	5/12/2008	7:52 AM	1,447	3,690	Dust and Quartz	NIOSH 0600/7500	RJLG XRD	5/13/2008	< 0.027	< 0.001	0.01	0.01	No	
5279276	6 - Cedar St 6th Floor Scaffolding	5/11/2008	7:28 AM	5/12/2008	8:17 AM	1,468	3,720	Dust and Quartz	NIOSH 0600/7500	RJLG XRD	5/13/2008	< 0.027	< 0.001	0.01	0.01	No	
5279282	7 - Roof, East Facade	5/11/2008	7:26 AM	5/12/2008	7:26 AM	1,439	3,813	Dust and Quartz	NIOSH 0600/7500	RJLG XRD	5/13/2008	< 0.028	< 0.001	0.01	0.01	No	
5279286	8 - Roof, North Facade	5/11/2008	7:40 AM	5/12/2008	7:34 AM	1,434	3,513	Dust and Quartz	NIOSH 0600/7500	RJLG XRD	5/13/2008	< 0.028	< 0.001	0.01	0.01	No	
5279122	3 - 90 West Courtyard at 2nd Floor Level	5/12/2008	6:50 AM	5/13/2008	7:16 AM	1,466	3,665	Dust and Quartz	NIOSH 0600/7500	RJLG XRD	5/14/2008	< 0.027	< 0.001	0.01	0.01	No	
5279126	4 - Albany St 6th Floor Scaffolding	5/12/2008	7:25 AM	5/13/2008	8:10 AM	1,485	3,713	Dust and Quartz	NIOSH 0600/7500	RJLG XRD	5/14/2008	< 0.027	< 0.001	0.01	0.01	No	
5279130	5 - Washington St 6th Floor Scaffolding	5/12/2008	7:58 AM	5/13/2008	8:17 AM	1,459	3,575	Dust and Quartz	NIOSH 0600/7500	RJLG XRD	5/14/2008	< 0.028	< 0.001	0.01	0.01	No	
5279134	6 - Cedar St 6th Floor Scaffolding	5/12/2008	8:23 AM	5/13/2008	7:31 AM	1,388	3,539	Dust and Quartz	NIOSH 0600/7500	RJLG XRD	5/14/2008	< 0.028	< 0.001	0.01	0.01	No	
5279138	7 - Roof, East Facade	5/12/2008	7:30 AM	5/13/2008	6:42 AM	1,392	3,619	Dust and Quartz	NIOSH 0600/7500	RJLG XRD	5/14/2008	< 0.028	< 0.001	0.01	0.01	No	
5279142	8 - Roof, North Facade	5/12/2008	7:38 AM	5/13/2008	7:12 AM	1,414	3,606	Dust and Quartz	NIOSH 0600/7500	RJLG XRD	5/14/2008	< 0.028	< 0.001	0.01	0.01	No	
5279150	3 - 90 West Courtyard at 2nd Floor Level	5/13/2008	7:18 AM	5/14/2008	7:13 AM	1,435	3,588	Dust and Quartz	NIOSH 0600/7500	RJLG XRD	5/15/2008	< 0.028	< 0.001	0.01	0.01	No	
5279154	4 - Albany St 6th Floor Scaffolding	5/13/2008	8:12 AM	5/14/2008	7:44 AM	1,412	3,601	Dust and Quartz	NIOSH 0600/7500	RJLG XRD	5/15/2008	< 0.028	< 0.001	0.01	0.01	No	
5279158	5 - Washington St 6th Floor Scaffolding	5/13/2008	8:19 AM	5/14/2008	7:53 AM	1,413	3,179	Dust and Quartz	NIOSH 0600/7500	RJLG XRD	5/15/2008	< 0.031	< 0.002	0.01	0.01	No	
5279162	6 - Cedar St 6th Floor Scaffolding	5/13/2008	7:33 AM	5/14/2008	7:53 AM	1,440	3,744	Dust and Quartz	NIOSH 0600/7500	RJLG XRD	5/15/2008	< 0.027	< 0.001	0.01	0.01	No	
5279392	6 - Cedar St 6th Floor Scaffolding	5/13/2008	7:38 AM	5/14/2008	7:25 AM	1,427	3,425	Dust and Quartz	NIOSH 0600/7500	RJLG XRD	5/15/2008	< 0.029	< 0.001	0.01	0.01	No	
5279166	7 - Roof, East Facade	5/13/2008	6:50 AM	5/14/2008	8:40 AM	1,550	3,953	Dust and Quartz	NIOSH 0600/7500	RJLG XRD	5/15/2008	< 0.028	< 0.001	0.01	0.01	No	
5279170	8 - Roof, North Facade	5/13/2008	7:19 AM	5/14/2008	8:30 AM	1,511	3,853	Dust and Quartz	NIOSH 0600/7500	RJLG XRD	5/15/2008	< 0.026	< 0.001	0.01	0.01	No	
5279178	3 - 90 West Courtyard at 2nd Floor Level	5/14/2008	7:15 AM	5/15/2008	7:02 AM	1,427	3,568	Dust and Quartz	NIOSH 0600/7500	RJLG XRD	5/16/2008	< 0.028	< 0.001	0.01	0.01	No	
5279182	4 - Albany St 6th Floor Scaffolding	5/14/2008	7:46 AM	5/15/2008	7:11 AM	1,405	3,513	Dust and Quartz	NIOSH 0600/7500	RJLG XRD	5/16/2008	< 0.028	< 0.001	0.01	0.01	No	
5279186	5 - Washington St 6th Floor Scaffolding	5/14/2008	7:54 AM	5/15/2008	7:37 AM	1,423	3,486	Dust and Quartz	NIOSH 0600/7500	RJLG XRD	5/16/2008	< 0.029	< 0.001	0.01	0.01	No	
5279190	6 - Cedar St 6th Floor Scaffolding	5/14/2008	7:38 AM	5/15/2008	7:16 AM	1,420	3,621	Dust and Quartz	NIOSH 0600/7500	RJLG XRD	5/16/2008	< 0.028	< 0.001	0.01	0.01	No	
5279194	7 - Roof, East Facade	5/14/2008	8:45 AM	5/15/2008	7:27 AM	1,362	3,473	Dust and Quartz	NIOSH 0600/7500	RJLG XRD	5/16/2008	< 0.029	< 0.001	0.01	0.01	No	
5279198	8 - Roof, North Facade	5/14/2008	8:35 AM	5/15/2008	7:45 AM	1,390	3,475	Dust and Quartz	NIOSH 0600/7500	RJLG XRD	5/16/2008	< 0.029	< 0.001	0.01	0.01	No	
5279206	3 - 90 West Courtyard at 2nd Floor Level	5/15/2008	6:48 AM	5/16/2008	6:50 AM	1,422	3,555	Dust and Quartz	NIOSH 0600/7500	RJLG XRD	5/17/2008	< 0.028	< 0.001	0.01	0.01	No	
5279210	4 - Albany St 6th Floor Scaffolding	5/15/2008	7:31 AM	5/16/2008	7:03 AM	1,412	3,459	Dust and Quartz	NIOSH 0600/7500	RJLG XRD	5/17/2008	< 0.029	< 0.001	0.01	0.01	No	
5279214	5 - Washington St 6th Floor Scaffolding	5/15/2008	7:41 AM	5/16/2008	7:14 AM	1,413	3,533	Dust and Quartz	NIOSH 0600/7500	RJLG XRD	5/17/2008	< 0.028	< 0.001	0.01	0.01	No	
5279218	6 - Cedar St 6th Floor Scaffolding	5/15/2008	7:29 AM	5/16/2008	7:25 AM	1,445	3,613	Dust and Quartz	NIOSH 0600/7500	RJLG XRD	5/17/2008	< 0.028	< 0.001	0.01	0.01	No	
5279222	7 - Roof, East Facade	5/15/2008	7:37 AM	5/16/2008	7:31 AM	1,434	3,800	Dust and Quartz	NIOSH 0600/7500	RJLG XRD	5/17/2008	0.029	< 0.001	0.01	0.01	No	
5279226	8 - Roof, North Facade	5/15/2008	7:50 AM	5/16/2008	7:56 AM	1,445	3,540	Dust and Quartz	NIOSH 0600/7500	RJLG XRD	5/17/2008	< 0.028	< 0.001	0.01	0.01	No	
5279234	3 - 90 West Courtyard at 2nd Floor Level	5/16/2008	6:55 AM	5/17/2008	7:45 AM	1,490	3,725	Dust and Quartz	NIOSH 0600/7500	RJLG XRD	5/19/2008	< 0.027	< 0.001	0.01	0.01	No	
5279236	4 - Albany St 6th Floor Scaffolding	5/16/2008	7:07 AM	5/17/2008	7:55 AM	1,458	3,611	Dust and Quartz	NIOSH 0600/7500	RJLG XRD	5/19/2008	< 0.028	< 0.001	0.01	0.01	No	
5279242	5 - Washington St 6th Floor Scaffolding	5/16/2008	7:18 AM	5/17/2008	8:03 AM	1,485	3,564	Dust and Quartz	NIOSH 0600/7500	RJLG XRD	5/19/2008	< 0.028	< 0.001	0.01	0.01	No	
5279246	6 - Cedar St 6th Floor Scaffolding	5/16/2008	7:31 AM	5/17/2008	8:12 AM	1,481	3,703	Dust and Quartz	NIOSH 0600/7500	RJLG XRD	5/19/2008	< 0.027	< 0.001	0.01	0.01	No	
5279250	7 - Roof, East Facade	5/16/2008	7:44 AM	5/17/2008	7:40 AM	1,436	3,662	Dust and Quartz	NIOSH 0600/7500	RJLG XRD	5/19/2008	< 0.027	< 0.001	0.01	0.01	No	
5279254	8 - Roof, North Facade	5/16/2008	8:33 AM	5/17/2008	8:21 AM	1,428	3,713	Dust and Quartz	NIOSH 0600/7500	RJLG XRD	5/19/2008	< 0.027	< 0.001	0.01	0.01	No	
5279290	3 - 90 West Courtyard at 2nd Floor Level	5/17/2008	7:50 AM	5/18/2008	7:11 AM	1,401	3,503	Dust and Quartz	NIOSH 0600/7500	RJLG XRD	5/20/2008	< 0.029	< 0.001	0.01	0.01	No	
5279294	4 - Albany St 6th Floor Scaffolding	5/17/2008	8:00 AM	5/18/2008	7:22 AM	1,402	3,225	Dust and Quartz	NIOSH 0600/7500	RJLG XRD	5/20/2008	< 0.031	< 0.002	0.01	0.01	No	
5279448	5 - Washington St 6th Floor Scaffolding	5/17/2008	8:07 AM	5/18/2008	7:30 AM	1,403	3,508	Dust and Quartz	NIOSH 0600/7500	RJLG XRD	5/20/2008	< 0.029	< 0.001	0.01	0.01	No	
5274956	6 - Cedar St 6th Floor Scaffolding	5/17/2008	8:16 AM	5/18/2008	7:39 AM	1,403	3,508	Dust and Quartz	NIOSH 0600/7500	RJLG XRD	5/20/2008	< 0.029	< 0.001	0.01	0.01	No	
5274960	7 - Roof, East Facade	5/17/2008	7:45 AM	5/18/2008	7:26 AM	1,421	3,624	Dust and Quartz	NIOSH 0600/7500	RJLG XRD	5/20/2008	< 0.024	< 0.001	0.01	0.01	No	
5274964	8 - Roof, North Facade	5/17/2008	8:25 AM	5/18/2008	7:39 AM	1,394	3,346	Dust and Quartz	NIOSH 0600/7500	RJLG XRD	5/20/2008	< 0.030	< 0.001	0.01	0.01	No	

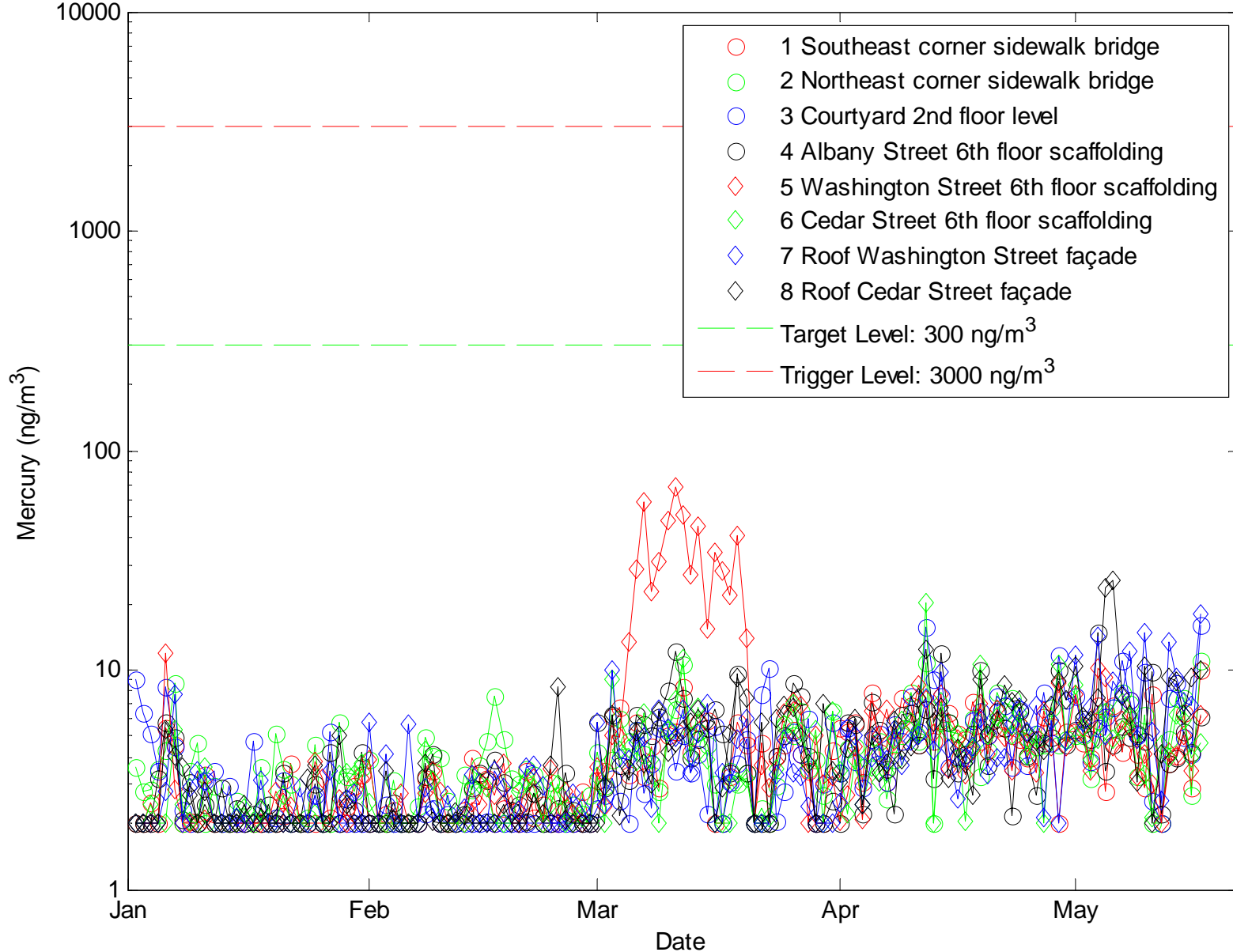
MasterWorks - 130 Cedar Building, Community Monitoring														
Sample No.	Sampling Location	Collection Start Date	Collection (Time on)	Collection End Date	Collection (Time off)	Total Collection Time, minutes	Analysis	Analytical Method	Instrument	Lab Sample Receipt Date	PM _{2.5} Avg. Concentration (µg/m ³)	EPA Site Specific Trigger Level for PM _{2.5} (µg/m ³)	Exceeds Target Air Quality or EPA Site Specific Level?	Comments
N/A	3 - Courtyard, 2nd Floor Level	5/11/2008	12:00 AM	5/12/2008	12:00 AM	1,440	PM _{2.5}	Direct Read	Met One E-BAM Unit # G4526	N/A	9	65	No	
N/A	4 - Albany St 6th Floor Level Scaffolding	5/11/2008	12:00 AM	5/12/2008	12:00 AM	1,440	PM _{2.5}	Direct Read	Met One E-BAM Unit # G4728	N/A	9	65	No	
N/A	5 - Washington St 6th Floor Level Scaffolding	5/11/2008	12:00 AM	5/12/2008	12:00 AM	1,440	PM _{2.5}	Direct Read	Met One E-BAM Unit # G4729	N/A	8	65	No	
N/A	6 - Cedar St 6th Floor Level Scaffolding	5/11/2008	12:00 AM	5/12/2008	12:00 AM	1,440	PM _{2.5}	Direct Read	Met One E-BAM Unit # G4527	N/A	9	65	No	
N/A	7 - Roof, East	5/11/2008	12:00 AM	5/12/2008	12:00 AM	1,440	PM _{2.5}	Direct Read	Met One E-BAM Unit # F5001	N/A	10	65	No	
N/A	8 - Roof, North	5/11/2008	12:00 AM	5/12/2008	12:00 AM	1,440	PM _{2.5}	Direct Read	Met One E-BAM Unit # E3364	N/A	10	65	No	
N/A	3 - Courtyard, 2nd Floor Level	5/12/2008	12:00 AM	5/13/2008	12:00 AM	1,440	PM _{2.5}	Direct Read	Met One E-BAM Unit # G4526	N/A	10	65	No	
N/A	4 - Albany St 6th Floor Level Scaffolding	5/12/2008	12:00 AM	5/13/2008	12:00 AM	1,440	PM _{2.5}	Direct Read	Met One E-BAM Unit # G4728	N/A	10	65	No	
N/A	5 - Washington St 6th Floor Level Scaffolding	5/12/2008	12:00 AM	5/13/2008	12:00 AM	1,440	PM _{2.5}	Direct Read	Met One E-BAM Unit # G4729	N/A	12	65	No	
N/A	6 - Cedar St 6th Floor Level Scaffolding	5/12/2008	12:00 AM	5/13/2008	12:00 AM	1,440	PM _{2.5}	Direct Read	Met One E-BAM Unit # G4527	N/A	14	65	No	
N/A	7 - Roof, East	5/12/2008	12:00 AM	5/13/2008	12:00 AM	1,105	PM _{2.5}	Direct Read	Met One E-BAM Unit # F5001	N/A	11	65	No	Instrument off-line for portion of day, conc. is not a 24 hr. avg.
N/A	8 - Roof, North	5/12/2008	12:00 AM	5/13/2008	12:00 AM	1,440	PM _{2.5}	Direct Read	Met One E-BAM Unit # E3364	N/A	10	65	No	
N/A	3 - Courtyard, 2nd Floor Level	5/13/2008	12:00 AM	5/14/2008	12:00 AM	1,440	PM _{2.5}	Direct Read	Met One E-BAM Unit # G4526	N/A	8	65	No	
N/A	4 - Albany St 6th Floor Level Scaffolding	5/13/2008	12:00 AM	5/14/2008	12:00 AM	1,440	PM _{2.5}	Direct Read	Met One E-BAM Unit # G4728	N/A	9	65	No	
N/A	5 - Washington St 6th Floor Level Scaffolding	5/13/2008	12:00 AM	5/14/2008	12:00 AM	1,440	PM _{2.5}	Direct Read	Met One E-BAM Unit # G4729	N/A	7	65	No	
N/A	6 - Cedar St 6th Floor Level Scaffolding	5/13/2008	12:00 AM	5/14/2008	12:00 AM	1,440	PM _{2.5}	Direct Read	Met One E-BAM Unit # G4527	N/A	9	65	No	
N/A	7 - Roof, East	5/13/2008	12:00 AM	5/14/2008	12:00 AM	1,440	PM _{2.5}	Direct Read	Met One E-BAM Unit # F5001	N/A	7	65	No	
N/A	8 - Roof, North	5/13/2008	12:00 AM	5/14/2008	12:00 AM	1,440	PM _{2.5}	Direct Read	Met One E-BAM Unit # E3364	N/A	8	65	No	
N/A	3 - Courtyard, 2nd Floor Level	5/14/2008	12:00 AM	5/15/2008	12:00 AM	1,440	PM _{2.5}	Direct Read	Met One E-BAM Unit # G4526	N/A	17	65	No	
N/A	4 - Albany St 6th Floor Level Scaffolding	5/14/2008	12:00 AM	5/15/2008	12:00 AM	1,440	PM _{2.5}	Direct Read	Met One E-BAM Unit # G4728	N/A	14	65	No	
N/A	5 - Washington St 6th Floor Level Scaffolding	5/14/2008	12:00 AM	5/15/2008	12:00 AM	1,440	PM _{2.5}	Direct Read	Met One E-BAM Unit # G4729	N/A	15	65	No	
N/A	6 - Cedar St 6th Floor Level Scaffolding	5/14/2008	12:00 AM	5/15/2008	12:00 AM	1,440	PM _{2.5}	Direct Read	Met One E-BAM Unit # G4527	N/A	14	65	No	
N/A	7 - Roof, East	5/14/2008	12:00 AM	5/15/2008	12:00 AM	1,440	PM _{2.5}	Direct Read	Met One E-BAM Unit # F5001	N/A	19	65	No	
N/A	8 - Roof, North	5/14/2008	12:00 AM	5/15/2008	12:00 AM	1,440	PM _{2.5}	Direct Read	Met One E-BAM Unit # E3364	N/A	34	65	No	
N/A	3 - Courtyard, 2nd Floor Level	5/15/2008	12:00 AM	5/16/2008	12:00 AM	1,440	PM _{2.5}	Direct Read	Met One E-BAM Unit # G4526	N/A	24	65	No	
N/A	4 - Albany St 6th Floor Level Scaffolding	5/15/2008	12:00 AM	5/16/2008	12:00 AM	1,440	PM _{2.5}	Direct Read	Met One E-BAM Unit # G4728	N/A	25	65	No	
N/A	5 - Washington St 6th Floor Level Scaffolding	5/15/2008	12:00 AM	5/16/2008	12:00 AM	1,440	PM _{2.5}	Direct Read	Met One E-BAM Unit # G4729	N/A	26	65	No	
N/A	6 - Cedar St 6th Floor Level Scaffolding	5/15/2008	12:00 AM	5/16/2008	12:00 AM	1,440	PM _{2.5}	Direct Read	Met One E-BAM Unit # G4527	N/A	26	65	No	
N/A	7 - Roof, East	5/15/2008	12:00 AM	5/16/2008	12:00 AM	1,440	PM _{2.5}	Direct Read	Met One E-BAM Unit # F5001	N/A	33	65	No	
N/A	8 - Roof, North	5/15/2008	12:00 AM	5/16/2008	12:00 AM	1,440	PM _{2.5}	Direct Read	Met One E-BAM Unit # E3364	N/A	29	65	No	
N/A	3 - Courtyard, 2nd Floor Level	5/16/2008	12:00 AM	5/17/2008	12:00 AM	1,440	PM _{2.5}	Direct Read	Met One E-BAM Unit # G4526	N/A	17	65	No	
N/A	4 - Albany St 6th Floor Level Scaffolding	5/16/2008	12:00 AM	5/17/2008	12:00 AM	1,440	PM _{2.5}	Direct Read	Met One E-BAM Unit # G4728	N/A	19	65	No	
N/A	5 - Washington St 6th Floor Level Scaffolding	5/16/2008	12:00 AM	5/17/2008	12:00 AM	1,440	PM _{2.5}	Direct Read	Met One E-BAM Unit # G4729	N/A	20	65	No	
N/A	6 - Cedar St 6th Floor Level Scaffolding	5/16/2008	12:00 AM	5/17/2008	12:00 AM	1,440	PM _{2.5}	Direct Read	Met One E-BAM Unit # G4527	N/A	20	65	No	
N/A	7 - Roof, East	5/16/2008	12:00 AM	5/17/2008	12:00 AM	1,440	PM _{2.5}	Direct Read	Met One E-BAM Unit # F5001	N/A	24	65	No	
N/A	8 - Roof, North	5/16/2008	12:00 AM	5/17/2008	12:00 AM	1,440	PM _{2.5}	Direct Read	Met One E-BAM Unit # E3364	N/A	13	65	No	
N/A	3 - Courtyard, 2nd Floor Level	5/17/2008	12:00 AM	5/18/2008	12:00 AM	1,440	PM _{2.5}	Direct Read	Met One E-BAM Unit # G4526	N/A	11	65	No	
N/A	4 - Albany St 6th Floor Level Scaffolding	5/17/2008	12:00 AM	5/18/2008	12:00 AM	1,440	PM _{2.5}	Direct Read	Met One E-BAM Unit # G4728	N/A	11	65	No	
N/A	5 - Washington St 6th Floor Level Scaffolding	5/17/2008	12:00 AM	5/18/2008	12:00 AM	1,440	PM _{2.5}	Direct Read	Met One E-BAM Unit # G4729	N/A	11	65	No	
N/A	6 - Cedar St 6th Floor Level Scaffolding	5/17/2008	12:00 AM	5/18/2008	12:00 AM	1,440	PM _{2.5}	Direct Read	Met One E-BAM Unit # G4527	N/A	13	65	No	
N/A	7 - Roof, East	5/17/2008	12:00 AM	5/18/2008	12:00 AM	1,440	PM _{2.5}	Direct Read	Met One E-BAM Unit # F5001	N/A	23	65	No	
N/A	8 - Roof, North	5/17/2008	12:00 AM	5/18/2008	12:00 AM	1,440	PM _{2.5}	Direct Read	Met One E-BAM Unit # E3364	N/A	12	65	No	

MasterWorks - 130 Cedar Building, Community Monitoring

Sample No.	Sampling Location	Collection Start Date	Collection (Time on)	Collection End Date	Collection (Time off)	Total Collection Time, minutes	Analysis	Analytical Method	Instrument	Lab Sample Receipt Date	PM ₁₀ Avg. Concentration (µg/m ³)	EPA Site Specific Trigger Level for PM ₁₀ (µg/m ³)	Exceeds Target Air quality or EPA Site Specific Level?	Comments
N/A	3 - Courtyard, 2nd Floor Level	5/11/2008	12:00 AM	05/12/2008	12:00 AM	1,440	PM ₁₀	Direct Read	Met One E-BAM Unit # G4606	N/A	11	150	No	
N/A	4 - Albany St 6th Floor Level Scaffolding	5/11/2008	12:00 AM	05/12/2008	12:00 AM	1,440	PM ₁₀	Direct Read	Met One E-BAM Unit # G4731	N/A	27	150	No	
N/A	5 - Washington St 6th Floor Level Scaffolding	5/11/2008	12:00 AM	05/12/2008	12:00 AM	1,440	PM ₁₀	Direct Read	Met One E-BAM Unit # G4604	N/A	18	150	No	
N/A	6 - Cedar St 6th Floor Level Scaffolding	5/11/2008	12:00 AM	05/12/2008	12:00 AM	1,440	PM ₁₀	Direct Read	Met One E-BAM Unit # G4605	N/A	23	150	No	
N/A	7 - Roof, East	5/11/2008	12:00 AM	05/12/2008	12:00 AM	1,440	PM ₁₀	Direct Read	Met One E-BAM Unit # E3363	N/A	24	150	No	
N/A	8 - Roof, North	5/11/2008	12:00 AM	05/12/2008	12:00 AM	1,440	PM ₁₀	Direct Read	Met One E-BAM Unit # G4607	N/A	20	150	No	
N/A	3 - Courtyard, 2nd Floor Level	5/12/2008	12:00 AM	05/13/2008	12:00 AM	1,440	PM ₁₀	Direct Read	Met One E-BAM Unit # G4606	N/A	23	150	No	
N/A	4 - Albany St 6th Floor Level Scaffolding	5/12/2008	12:00 AM	05/13/2008	12:00 AM	1,440	PM ₁₀	Direct Read	Met One E-BAM Unit # G4731	N/A	45	150	No	
N/A	5 - Washington St 6th Floor Level Scaffolding	5/12/2008	12:00 AM	05/13/2008	12:00 AM	1,440	PM ₁₀	Direct Read	Met One E-BAM Unit # G4604	N/A	34	150	No	
N/A	6 - Cedar St 6th Floor Level Scaffolding	5/12/2008	12:00 AM	05/13/2008	12:00 AM	1,440	PM ₁₀	Direct Read	Met One E-BAM Unit # G4605	N/A	50	150	No	
N/A	7 - Roof, East	5/12/2008	12:00 AM	05/13/2008	12:00 AM	1,090	PM ₁₀	Direct Read	Met One E-BAM Unit # E3363	N/A	34	150	No	Instrument off-line for portion of day, conc. is not a 24 hr. avg.
N/A	8 - Roof, North	5/12/2008	12:00 AM	05/13/2008	12:00 AM	1,440	PM ₁₀	Direct Read	Met One E-BAM Unit # G4607	N/A	38	150	No	
N/A	3 - Courtyard, 2nd Floor Level	5/13/2008	12:00 AM	05/14/2008	12:00 AM	1,440	PM ₁₀	Direct Read	Met One E-BAM Unit # G4606	N/A	14	150	No	
N/A	4 - Albany St 6th Floor Level Scaffolding	5/13/2008	12:00 AM	05/14/2008	12:00 AM	1,440	PM ₁₀	Direct Read	Met One E-BAM Unit # G4731	N/A	31	150	No	
N/A	5 - Washington St 6th Floor Level Scaffolding	5/13/2008	12:00 AM	05/14/2008	12:00 AM	1,440	PM ₁₀	Direct Read	Met One E-BAM Unit # G4604	N/A	16	150	No	
N/A	6 - Cedar St 6th Floor Level Scaffolding	5/13/2008	12:00 AM	05/14/2008	12:00 AM	1,440	PM ₁₀	Direct Read	Met One E-BAM Unit # G4605	N/A	30	150	No	
N/A	7 - Roof, East	5/13/2008	12:00 AM	05/14/2008	12:00 AM	1,440	PM ₁₀	Direct Read	Met One E-BAM Unit # E3363	N/A	26	150	No	
N/A	8 - Roof, North	5/13/2008	12:00 AM	05/14/2008	12:00 AM	1,440	PM ₁₀	Direct Read	Met One E-BAM Unit # G4607	N/A	27	150	No	
N/A	3 - Courtyard, 2nd Floor Level	5/14/2008	12:00 AM	05/15/2008	12:00 AM	1,440	PM ₁₀	Direct Read	Met One E-BAM Unit # G4606	N/A	24	150	No	
N/A	4 - Albany St 6th Floor Level Scaffolding	5/14/2008	12:00 AM	05/15/2008	12:00 AM	1,440	PM ₁₀	Direct Read	Met One E-BAM Unit # G4731	N/A	24	150	No	
N/A	5 - Washington St 6th Floor Level Scaffolding	5/14/2008	12:00 AM	05/15/2008	12:00 AM	1,440	PM ₁₀	Direct Read	Met One E-BAM Unit # G4604	N/A	29	150	No	
N/A	6 - Cedar St 6th Floor Level Scaffolding	5/14/2008	12:00 AM	05/15/2008	12:00 AM	1,440	PM ₁₀	Direct Read	Met One E-BAM Unit # G4605	N/A	27	150	No	
N/A	7 - Roof, East	5/14/2008	12:00 AM	05/15/2008	12:00 AM	1,440	PM ₁₀	Direct Read	Met One E-BAM Unit # E3363	N/A	35	150	No	
N/A	8 - Roof, North	5/14/2008	12:00 AM	05/15/2008	12:00 AM	1,440	PM ₁₀	Direct Read	Met One E-BAM Unit # G4607	N/A	26	150	No	
N/A	3 - Courtyard, 2nd Floor Level	5/15/2008	12:00 AM	05/16/2008	12:00 AM	1,440	PM ₁₀	Direct Read	Met One E-BAM Unit # G4606	N/A	32	150	No	
N/A	4 - Albany St 6th Floor Level Scaffolding	5/15/2008	12:00 AM	05/16/2008	12:00 AM	1,440	PM ₁₀	Direct Read	Met One E-BAM Unit # G4731	N/A	39	150	No	
N/A	5 - Washington St 6th Floor Level Scaffolding	5/15/2008	12:00 AM	05/16/2008	12:00 AM	1,440	PM ₁₀	Direct Read	Met One E-BAM Unit # G4604	N/A	46	150	No	
N/A	6 - Cedar St 6th Floor Level Scaffolding	5/15/2008	12:00 AM	05/16/2008	12:00 AM	1,440	PM ₁₀	Direct Read	Met One E-BAM Unit # G4605	N/A	44	150	No	
N/A	7 - Roof, East	5/15/2008	12:00 AM	05/16/2008	12:00 AM	1,440	PM ₁₀	Direct Read	Met One E-BAM Unit # E3363	N/A	40	150	No	
N/A	8 - Roof, North	5/15/2008	12:00 AM	05/16/2008	12:00 AM	1,440	PM ₁₀	Direct Read	Met One E-BAM Unit # G4607	N/A	35	150	No	
N/A	3 - Courtyard, 2nd Floor Level	5/16/2008	12:00 AM	05/17/2008	12:00 AM	1,440	PM ₁₀	Direct Read	Met One E-BAM Unit # G4606	N/A	25	150	No	
N/A	4 - Albany St 6th Floor Level Scaffolding	5/16/2008	12:00 AM	05/17/2008	12:00 AM	1,440	PM ₁₀	Direct Read	Met One E-BAM Unit # G4731	N/A	26	150	No	
N/A	5 - Washington St 6th Floor Level Scaffolding	5/16/2008	12:00 AM	05/17/2008	12:00 AM	1,440	PM ₁₀	Direct Read	Met One E-BAM Unit # G4604	N/A	35	150	No	
N/A	6 - Cedar St 6th Floor Level Scaffolding	5/16/2008	12:00 AM	05/17/2008	12:00 AM	1,440	PM ₁₀	Direct Read	Met One E-BAM Unit # G4605	N/A	55	150	No	
N/A	7 - Roof, East	5/16/2008	12:00 AM	05/17/2008	12:00 AM	1,440	PM ₁₀	Direct Read	Met One E-BAM Unit # E3363	N/A	20	150	No	
N/A	8 - Roof, North	5/16/2008	12:00 AM	05/17/2008	12:00 AM	1,440	PM ₁₀	Direct Read	Met One E-BAM Unit # G4607	N/A	60	150	No	
N/A	3 - Courtyard, 2nd Floor Level	5/17/2008	12:00 AM	05/18/2008	12:00 AM	1,070	PM ₁₀	Direct Read	Met One E-BAM Unit # G4606	N/A	27	150	No	Instrument off-line for portion of day, conc. is not a 24 hr. avg.
N/A	4 - Albany St 6th Floor Level Scaffolding	5/17/2008	12:00 AM	05/18/2008	12:00 AM	1,440	PM ₁₀	Direct Read	Met One E-BAM Unit # G4731	N/A	34	150	No	
N/A	5 - Washington St 6th Floor Level Scaffolding	5/17/2008	12:00 AM	05/18/2008	12:00 AM	1,440	PM ₁₀	Direct Read	Met One E-BAM Unit # G4604	N/A	17	150	No	
N/A	6 - Cedar St 6th Floor Level Scaffolding	5/17/2008	12:00 AM	05/18/2008	12:00 AM	1,440	PM ₁₀	Direct Read	Met One E-BAM Unit # G4605	N/A	22	150	No	
N/A	7 - Roof, East	5/17/2008	12:00 AM	5/18/2008	12:00 AM	1,440	PM ₁₀	Direct Read	Met One E-BAM Unit # E3363	N/A	27	150	No	
N/A	8 - Roof, North	5/17/2008	12:00 AM	5/18/2008	12:00 AM	1,440	PM ₁₀	Direct Read	Met One E-BAM Unit # G4607	N/A	24	150	No	

350 Hochberg Road, Monroeville, PA 15146
Phone: (724) 325-1776 Fax: (724) 733-1799

Mercury Vapor (Hg^0) Air Results for Outdoor Community
Monitoring Stations by Location as recorded by the Lumex Analyzer



350 Hochberg Road, Monroeville, PA 15146
Phone: (724) 325-1776 Fax: (724) 733-1799

Report Summary

Air Mercury Results (Hg⁰, ng/m³) as recorded by the Lumex RA915+ analyzer
Week of 05/11/08 to 05/17/08

Date	Mercury (Hg ⁰) ng/m ³ 30-sec readings	1 Southeast corner sidewalk bridge	2 Northeast corner sidewalk bridge	3 Courtyard 2nd floor level	4 Albany Street 6th floor scaffolding	5 Washington Street 6th floor scaffolding	6 Cedar Street 6th floor scaffolding	7 Roof Washington Street façade	8 Roof Cedar Street façade
1-May-08	# Samples	9	9	9	9	9	9	9	
	Average	8	2	3	10	3	2	5	2
	Maximum	9	2	5	13	4	3	7	2
2-May-08	# Samples	36	36	36	36	36	36	36	36
	Average	2	2	2	2	2	5	3	4
	Maximum	3	4	4	7	6	7	5	9
3-May-08	# Samples	36	36	36	36	36	36	36	36
	Average	4	5	7	4	4	4	13	9
	Maximum	6	11	15	6	9	10	35	16
4-May-08	# Samples	36	36	36	36	36	36	36	36
	Average	4	7	9	4	4	6	9	9
	Maximum	7	15	23	7	7	10	16	24
5-May-08	# Samples	36	36	36	36	36	36	36	36
	Average	6	7	5	5	5	6	7	6
	Maximum	10	12	9	8	9	10	9	9
6-May-08	# Samples	36	36	36	36	36	36	36	36
	Average	3	3	4	4	3	4	7	9
	Maximum	5	6	9	9	8	12	15	35
7-May-08	# Samples	9	9	9	9	9	9	9	9
	Average	10	11	16	6	6	5	18	10
	Maximum	11	13	17	7	7	6	19	11