

MasterWorks - 130 Cedar Building, Community Monitoring																											
Sample No.	Sampling Location	Collection Start Date	Collection (Time on)	Collection End Date	Collection (Time off)	Total collection time, minutes	Sample Volume (liters)	Analyte	Analytical Method	Lab	Lab Sample Receipt Date	Total Structure Count			Asbestos < 5 µm	Asbestos ≥ 5 µm	Result (S/m ³)	Concentration (S/cc)	EPA Site Specific Trigger Level	Exceeds EPA Site Specific Trigger Level?	Comments						
												All Asbestos	Chrysotile	Amphibole													
5279401	3-90 West Courtyard at 2nd Floor Level	5/19/2008	6:57 AM	5/19/2008	10:52 AM	235	1,528	Asbestos	AMERA, 40 CFR, Part 763, October 30, 1987 (Modified)	RJLG TEM	5/20/2008	0	0	0	0	0	< 7.6	< 0.0019	70 S/m ³	No							
5279402	4-Albany St 6th Floor Scaffolding	5/19/2008	10:55 AM	5/19/2008	10:55 AM	232	1,450	Asbestos	AMERA, 40 CFR, Part 763, October 30, 1987 (Modified)	RJLG TEM	5/20/2008	0	0	0	0	0	< 7.1	< 0.0019	70 S/m ³	No							
5279403	5-Washington St 6th Floor Scaffolding	5/19/2008	7:04 AM	5/19/2008	10:56 AM	232	1,450	Asbestos	AMERA, 40 CFR, Part 763, October 30, 1987 (Modified)	RJLG TEM	5/20/2008	0	0	0	0	0	< 7.1	< 0.0019	70 S/m ³	No							
5279404	6-Cedar St 6th Floor Scaffolding	5/19/2008	7:06 AM	5/19/2008	10:58 AM	232	1,363	Asbestos	AMERA, 40 CFR, Part 763, October 30, 1987 (Modified)	RJLG TEM	5/20/2008	0	0	0	0	0	< 6.7	< 0.0019	70 S/m ³	No							
5279405	7-Roof, East Facade	5/19/2008	7:20 AM	5/19/2008	11:00 AM	220	1,348	Asbestos	AMERA, 40 CFR, Part 763, October 30, 1987 (Modified)	RJLG TEM	5/20/2008	0	0	0	0	0	< 6.7	< 0.0019	70 S/m ³	No							
5279406	8-Roof, North Facade	5/19/2008	7:22 AM	5/19/2008	11:01 AM	219	1,314	Asbestos	AMERA, 40 CFR, Part 763, October 30, 1987 (Modified)	RJLG TEM	5/20/2008	0	0	0	0	0	< 6.7	< 0.0020	70 S/m ³	No							
5279150	3-90 West Courtyard at 2nd Floor Level	5/19/2008	7:43 AM	5/19/2008	2:56 PM	433	1,516	Asbestos	AMERA, 40 CFR, Part 763, October 30, 1987 (Modified)	RJLG TEM	5/20/2008	0	0	0	0	0	< 7.6	< 0.0019	70 S/m ³	No							
5279151	4-Albany St 6th Floor Scaffolding	5/19/2008	7:46 AM	5/19/2008	3:05 PM	439	1,559	Asbestos	AMERA, 40 CFR, Part 763, October 30, 1987 (Modified)	RJLG TEM	5/20/2008	0	0	0	0	0	< 7.6	< 0.0019	70 S/m ³	No							
5279152	5-Washington St 6th Floor Scaffolding	5/19/2008	7:49 AM	5/19/2008	3:07 PM	439	1,559	Asbestos	AMERA, 40 CFR, Part 763, October 30, 1987 (Modified)	RJLG TEM	5/20/2008	0	0	0	0	0	< 7.6	< 0.0019	70 S/m ³	No							
5279153	6-Cedar St 6th Floor Scaffolding	5/19/2008	7:49 AM	5/19/2008	3:01 PM	437	1,512	Asbestos	AMERA, 40 CFR, Part 763, October 30, 1987 (Modified)	RJLG TEM	5/20/2008	0	0	0	0	0	< 7.6	< 0.0019	70 S/m ³	No							
5279154	7-Roof, East Facade	5/19/2008	7:53 AM	5/19/2008	3:10 PM	437	1,639	Asbestos	AMERA, 40 CFR, Part 763, October 30, 1987 (Modified)	RJLG TEM	5/20/2008	0	0	0	0	0	< 8.1	< 0.0019	70 S/m ³	No							
5279155	8-Roof, North Facade	5/19/2008	7:54 AM	5/19/2008	1:14 PM	320	1,136	Asbestos	AMERA, 40 CFR, Part 763, October 30, 1987 (Modified)	RJLG TEM	5/20/2008	0	0	0	0	0	< 5.7	< 0.0019	70 S/m ³	No							
5279408	3-90 West Courtyard at 2nd Floor Level	5/19/2008	2:56 PM	5/19/2008	11:14 PM	498	1,743	Asbestos	AMERA, 40 CFR, Part 763, October 30, 1987 (Modified)	RJLG TEM	5/21/2008	0	0	0	0	0	< 8.7	< 0.0019	70 S/m ³	No							
5279409	4-Albany St 6th Floor Scaffolding	5/19/2008	3:05 PM	5/19/2008	11:15 PM	490	1,715	Asbestos	AMERA, 40 CFR, Part 763, October 30, 1987 (Modified)	RJLG TEM	5/21/2008	0	0	0	0	0	< 8.7	< 0.0020	70 S/m ³	No							
5279410	5-Washington St 6th Floor Scaffolding	5/19/2008	3:07 PM	5/19/2008	11:16 PM	489	1,712	Asbestos	AMERA, 40 CFR, Part 763, October 30, 1987 (Modified)	RJLG TEM	5/21/2008	0	0	0	0	0	< 8.7	< 0.0020	70 S/m ³	No							
5279411	6-Cedar St 6th Floor Scaffolding	5/19/2008	3:01 PM	5/19/2008	11:17 PM	496	1,761	Asbestos	AMERA, 40 CFR, Part 763, October 30, 1987 (Modified)	RJLG TEM	5/21/2008	0	0	0	0	0	< 8.7	< 0.0019	70 S/m ³	No							
5278630	9-Washington St 9th Floor Scaffolding	5/19/2008	5:21 PM	5/19/2008	11:01 PM	340	1,377	Asbestos	AMERA, 40 CFR, Part 763, October 30, 1987 (Modified)	RJLG TEM	5/21/2008	0	0	0	0	0	< 7.1	< 0.0020	70 S/m ³	No							
5279413	10-Cedar St 9th Floor Scaffolding	5/19/2008	5:26 PM	5/19/2008	11:19 PM	343	1,321	Asbestos	AMERA, 40 CFR, Part 763, October 30, 1987 (Modified)	RJLG TEM	5/21/2008	0	0	0	0	0	< 6.7	< 0.0019	70 S/m ³	No							
5279415	3-90 West Courtyard at 2nd Floor Level	5/20/2008	7:17 AM	5/20/2008	11:39 AM	478	1,690	Asbestos	AMERA, 40 CFR, Part 763, October 30, 1987 (Modified)	RJLG TEM	5/21/2008	0	0	0	0	0	< 8.7	< 0.0020	70 S/m ³	No							
5279416	4-Albany St 6th Floor Scaffolding	5/20/2008	7:24 AM	5/20/2008	3:23 PM	479	1,724	Asbestos	AMERA, 40 CFR, Part 763, October 30, 1987 (Modified)	RJLG TEM	5/21/2008	0	0	0	0	0	< 8.7	< 0.0019	70 S/m ³	No							
5279417	5-Washington St 6th Floor Scaffolding	5/20/2008	7:24 AM	5/20/2008	3:21 PM	477	1,693	Asbestos	AMERA, 40 CFR, Part 763, October 30, 1987 (Modified)	RJLG TEM	5/21/2008	0	0	0	0	0	< 8.7	< 0.0020	70 S/m ³	No							
5279418	6-Cedar St 6th Floor Scaffolding	5/20/2008	7:19 AM	5/20/2008	3:16 PM	477	1,670	Asbestos	AMERA, 40 CFR, Part 763, October 30, 1987 (Modified)	RJLG TEM	5/21/2008	0	0	0	0	0	< 8.1	< 0.0019	70 S/m ³	No							
5279419	9-Washington St 9th Floor Scaffolding	5/20/2008	7:26 AM	5/20/2008	3:25 PM	479	1,701	Asbestos	AMERA, 40 CFR, Part 763, October 30, 1987 (Modified)	RJLG TEM	5/21/2008	0	0	0	0	0	< 8.7	< 0.0020	70 S/m ³	No							
5279420	10-Cedar St 9th Floor Scaffolding	5/20/2008	7:21 AM	5/20/2008	3:16 PM	477	1,670	Asbestos	AMERA, 40 CFR, Part 763, October 30, 1987 (Modified)	RJLG TEM	5/21/2008	0	0	0	0	0	< 8.1	< 0.0019	70 S/m ³	No							
5279157	3-90 West Courtyard at 2nd Floor Level	5/21/2008	7:16 AM	5/21/2008	3:04 PM	469	1,688	Asbestos	AMERA, 40 CFR, Part 763, October 30, 1987 (Modified)	RJLG TEM	5/22/2008	0	0	0	0	0	< 8.7	< 0.0020	70 S/m ³	No							
5279158	4-Albany St 6th Floor Scaffolding	5/21/2008	7:21 AM	5/21/2008	3:08 PM	465	1,651	Asbestos	AMERA, 40 CFR, Part 763, October 30, 1987 (Modified)	RJLG TEM	5/22/2008	0	0	0	0	0	< 8.1	< 0.0019	70 S/m ³	No							
5279159	5-Washington St 6th Floor Scaffolding	5/21/2008	7:21 AM	5/21/2008	3:05 PM	464	1,670	Asbestos	AMERA, 40 CFR, Part 763, October 30, 1987 (Modified)	RJLG TEM	5/22/2008	0	0	0	0	0	< 8.1	< 0.0019	70 S/m ³	No							
5279160	6-Cedar St 6th Floor Scaffolding	5/21/2008	7:17 AM	5/21/2008	3:12 PM	475	1,605	Asbestos	AMERA, 40 CFR, Part 763, October 30, 1987 (Modified)	RJLG TEM	5/22/2008	0	0	0	0	0	< 8.7	< 0.0019	70 S/m ³	No							
5279161	9-Washington St 9th Floor Scaffolding	5/21/2008	7:24 AM	5/21/2008	3:08 PM	464	1,670	Asbestos	AMERA, 40 CFR, Part 763, October 30, 1987 (Modified)	RJLG TEM	5/22/2008	0	0	0	0	0	< 8.1	< 0.0019	70 S/m ³	No							
5290602	9-Washington St 9th Floor Scaffolding	5/21/2008	3:07 PM	5/21/2008	3:07 PM	463	1,597	Asbestos	AMERA, 40 CFR, Part 763, October 30, 1987 (Modified)	RJLG TEM	5/22/2008	0	0	0	0	0	< 8.1	< 0.0020	70 S/m ³	No							
5279162	10-Cedar St 9th Floor Scaffolding	5/21/2008	3:11 PM	5/21/2008	3:11 PM	472	1,699	Asbestos	AMERA, 40 CFR, Part 763, October 30, 1987 (Modified)	RJLG TEM	5/22/2008	0	0	0	0	0	< 8.7	< 0.0020	70 S/m ³	No							
5279171	3-90 West Courtyard at 2nd Floor Level	5/22/2008	7:29 AM	5/22/2008	3:25 PM	484	1,694	Asbestos	AMERA, 40 CFR, Part 763, October 30, 1987 (Modified)	RJLG TEM	5/23/2008	0	0	0	0	0	< 8.7	< 0.0020	70 S/m ³	No							
5279172	4-Albany St 6th Floor Scaffolding	5/22/2008	7:32 AM	5/22/2008	3:16 PM	484	1,647	Asbestos	AMERA, 40 CFR, Part 763, October 30, 1987 (Modified)	RJLG TEM	5/23/2008	0	0	0	0	0	< 8.1	< 0.0019	70 S/m ³	No							
5279173	5-Washington St 6th Floor Scaffolding	5/22/2008	7:32 AM	5/22/2008	3:16 PM	464	1,670	Asbestos	AMERA, 40 CFR, Part 763, October 30, 1987 (Modified)	RJLG TEM	5/23/2008	0	0	0	0	0	< 8.1	< 0.0019	70 S/m ³	No							
5279174	6-Cedar St 6th Floor Scaffolding	5/22/2008	7:28 AM	5/22/2008	3:08 PM	463	1,644	Asbestos	AMERA, 40 CFR, Part 763, October 30, 1987 (Modified)	RJLG TEM	5/23/2008	0	0	0	0	0	< 8.1	< 0.0019	70 S/m ³	No							
5279175	9-Washington St 9th Floor Scaffolding	5/22/2008	7:34 AM	5/22/2008	3:12 PM	458	1,649	Asbestos	AMERA, 40 CFR, Part 763, October 30, 1987 (Modified)	RJLG TEM	5/23/2008	0	0	0	0	0	< 8.1	< 0.0019	70 S/m ³	No							
5279176	10-Cedar St 9th Floor Scaffolding	5/22/2008	7:27 AM	5/22/2008	3:03 PM	456	1,596	Asbestos	AMERA, 40 CFR, Part 763, October 30, 1987 (Modified)	RJLG TEM	5/23/2008	0	0	0	0	0	< 8.1	< 0.0020	70 S/m ³	No							
5279164	3-90 West Courtyard at 2nd Floor Level	5/23/2008	7:06 AM	5/23/2008	3:06 PM	480	1,704	Asbestos	AMERA, 40 CFR, Part 763, October 30, 1987 (Modified)	RJLG TEM	5/24/2008	0	0	0	0	0	< 8.7	< 0.0020	70 S/m ³	No							
5279165	4-Albany St 6th Floor Scaffolding	5/23/2008	7:11 AM	5/23/2008	3:12 PM	481	1,708	Asbestos	AMERA, 40 CFR, Part 763, October 30, 1987 (Modified)	RJLG TEM	5/24/2008	0	0	0	0	0	< 8.7	< 0.0020	70 S/m ³	No							
5279166	5-Washington St 6th Floor Scaffolding	5/23/2008	7:13 AM	5/23/2008	3:13 PM	480	1,680	Asbestos	AMERA, 40 CFR, Part 763, October 30, 1987 (Modified)	RJLG TEM	5/24/2008	0	0	0	0	0	< 8.7	< 0.0020	70 S/m ³	No							
5279167	6-Cedar St 6th Floor Scaffolding	5/23/2008	7:09 AM	5/23/2008	3:09 PM	480	1,704	Asbestos	AMERA, 40 CFR, Part 763, October 30, 1987 (Modified)	RJLG TEM	5/24/2008	0	0	0	0	0	< 8.7	< 0.0020	70 S/m ³	No							
5279168	9-Washington St 9th Floor Scaffolding	5/23/2008	6:57 AM	5/23/2008	3:16 PM	499	1,747	Asbestos	AMERA, 40 CFR, Part 763, October 30, 1987 (Modified)	RJLG TEM	5/24/2008	0	0	0	0	0	< 8.7	< 0.0019	70 S/m ³	No							
5279169	10-Cedar St 9th Floor Scaffolding	5/23/2008	6:23 AM	5/23/2008	3:21 PM	478	1,675	Asbestos	AMERA, 40 CFR, Part 763, October 30, 1987 (Modified)	RJLG TEM	5/24/2008	0	0	0	0	0	< 8.1	< 0.0019	70 S/m ³	No							
5279136	3-90 West Courtyard at 2nd Floor Level	5/24/2008	6:51 AM	5/24/2008	10:59 AM	248	1,705	Asbestos	AMERA, 40 CFR, Part 763, October 30, 1987 (Modified)	RJLG TEM	5/27/2008	0	0	0	0	0	< 8.7	< 0.0020	70 S/m ³	No							
5279137	4-Albany St 6th Floor Scaffolding	5/24/2008	7:00 AM	5/24/2008	11:11 AM	251	1,757	Asbestos	AMERA, 40 CFR, Part 763, October 30, 1987 (Modified)	RJLG TEM	5/27/2008	0	0	0	0	0	< 8.7	< 0.0019	70 S/m ³	No							
5279138	5-Washington St 6th Floor Scaffolding	5/24/2008	7:00 AM	5/24/2008	11:10 AM	250	1,750	Asbestos	AMERA, 40 CFR, Part 763, October 30, 1987 (Modified)	RJLG TEM	5/27/2008	0	0	0	0	0	< 8.7	< 0.0019	70 S/m ³	No							
5279139	6-Cedar St 6th Floor Scaffolding	5/24/2008	6:53 AM	5/24/2008	11:02 AM	249	1,712	Asbestos	AMERA, 40 CFR, Part 763, October 30, 1987 (Modified)	RJLG TEM	5/27/2008	0	0	0	0	0	< 8.7	< 0.0020	70 S/m ³	No							
5279140	9-Washington St 9th Floor Scaffolding	5/24/2008	6:55 AM	5/24/2008	11:08 AM	250	1,688	Asbestos	AMERA, 40 CFR, Part 763, October 30, 1987 (Modified)	RJLG TEM	5/27/2008	0	0	0	0	0	< 8.7	< 0.0020	70 S/m ³	No							
5279141	10-Cedar St 9th Floor Scaffolding	5/24/2008	6:58 AM	5/24/2008	11:04 AM	249	1,681	Asbestos	AMERA, 40 CFR, Part 763, October 30, 1987 (Modified)	RJLG TEM	5/27/2008	0	0	0	0	0	< 8.7	< 0.0020	70 S/m ³	No							

Sample No.	Sampling Location	Collection Start Date	Collection Time (on)	Collection End Date	Collection Time (off)	Total collection time, minutes	Sample Volume (liters)	Analyte	Analytical Method	Lab	Lab Receipt Date	Target Air Quality Levels										Exceeds Target Air Quality Levels	Exceeds EPA Site Specific Trigger Levels	Comments	
												Barium Concentration (µg/m³)	Chromium Concentration (µg/m³)	Manganese Concentration (µg/m³)	Zinc Concentration (µg/m³)	Beryllium Concentration (µg/m³)	Copper Concentration (µg/m³)	Mercury Particulate Concentration (µg/m³)	Cadmium Concentration (µg/m³)	Lead Concentration (µg/m³)	Nickel Concentration (µg/m³)				Antimony Concentration (µg/m³)
												5.00	0.60	0.50	16.00	0.52	10.00	0.30	0.04	1.50	0.20				1.00
5279428	3-90 West Courtyard at 2nd Floor Level	5/18/2008	7:15 AM	5/19/2008	8:03 AM	1,488	4,687	Metals	NIOSH 7300 Modified ICP-MS	R.J.G. Metals	5/20/2008	0.023	< 0.043	0.011	0.12	< 0.0021	0.033	< 0.0021	0.009	0.016	< 0.013	No	No		
5279432	4- Albany St 6th Floor Scaffolding	5/18/2008	7:26 AM	5/19/2008	8:15 AM	1,489	5,063	Metals	NIOSH 7300 Modified ICP-MS	R.J.G. Metals	5/20/2008	0.020	0.042	0.010	0.11	< 0.0020	0.032	< 0.0020	0.008	0.027	< 0.012	No	No		
5279436	5- Washington St 6th Floor Scaffolding	5/18/2008	7:34 AM	5/19/2008	8:23 AM	1,489	5,212	Metals	NIOSH 7300 Modified ICP-MS	R.J.G. Metals	5/20/2008	0.022	< 0.038	0.010	0.11	< 0.0019	0.030	< 0.0019	< 0.0019	0.017	0.008	< 0.012	No	No	
5279440	6- Cedar St 6th Floor Scaffolding	5/18/2008	7:43 AM	5/19/2008	8:31 AM	1,488	5,134	Metals	NIOSH 7300 Modified ICP-MS	R.J.G. Metals	5/20/2008	0.021	< 0.039	0.010	0.11	< 0.0030	0.033	< 0.0030	0.012	0.011	< 0.012	No	No		
5279444	7- Roof, East Facade	5/18/2008	7:30 AM	5/19/2008	8:39 AM	1,389	4,882	Metals	NIOSH 7300 Modified ICP-MS	R.J.G. Metals	5/20/2008	0.015	0.051	< 0.008	0.09	< 0.0021	0.022	< 0.0021	< 0.008	0.008	< 0.012	No	No		
5279448	8- Roof, North Facade	5/18/2008	7:44 AM	5/19/2008	7:17 AM	1,413	4,784	Metals	NIOSH 7300 Modified ICP-MS	R.J.G. Metals	5/20/2008	0.013	0.048	< 0.008	0.09	< 0.0021	0.024	< 0.0021	< 0.008	0.008	< 0.013	No	No		
5279456	3-90 West Courtyard at 2nd Floor Level	5/19/2008	8:07 AM	5/20/2008	7:14 AM	1,387	4,895	Metals	NIOSH 7300 Modified ICP-MS	R.J.G. Metals	5/21/2008	0.048	< 0.041	0.019	0.15	< 0.0021	0.024	< 0.0021	0.041	0.005	0.015	No	No		
5279460	4- Albany St 6th Floor Scaffolding	5/19/2008	8:19 AM	5/20/2008	7:47 AM	1,428	4,928	Metals	NIOSH 7300 Modified ICP-MS	R.J.G. Metals	5/21/2008	0.016	0.049	0.010	0.10	< 0.0020	0.014	< 0.0020	0.009	0.008	< 0.012	No	No		
5279464	5- Washington St 6th Floor Scaffolding	5/19/2008	8:27 AM	5/20/2008	8:02 AM	1,415	4,963	Metals	NIOSH 7300 Modified ICP-MS	R.J.G. Metals	5/21/2008	0.024	< 0.040	0.013	0.11	< 0.0020	0.019	< 0.0020	< 0.0020	0.021	0.011	< 0.012	No	No	
5279468	6- Cedar St 6th Floor Scaffolding	5/19/2008	8:36 AM	5/20/2008	7:29 AM	1,274	4,809	Metals	NIOSH 7300 Modified ICP-MS	R.J.G. Metals	5/21/2008	0.020	< 0.042	0.012	0.12	< 0.0021	0.014	< 0.0021	0.016	0.008	< 0.013	No	No		
5279472	7- Roof, East Facade	5/19/2008	8:54 AM	5/20/2008	6:45 AM	1,431	5,185	Metals	NIOSH 7300 Modified ICP-MS	R.J.G. Metals	5/21/2008	0.028	< 0.039	0.032	0.09	< 0.0019	0.106	< 0.0019	0.040	0.016	< 0.012	No	No		
5279476	8- Roof, North Facade	5/19/2008	7:30 AM	5/20/2008	2:43 AM	1,153	4,153	Metals	NIOSH 7300 Modified ICP-MS	R.J.G. Metals	5/21/2008	0.022	< 0.048	0.019	0.14	< 0.0024	0.031	< 0.0024	< 0.0024	0.146	0.011	< 0.014	No	No	
5279484	3-90 West Courtyard at 2nd Floor Level	5/20/2008	7:16 AM	5/21/2008	7:30 AM	1,424	4,984	Metals	NIOSH 7300 Modified ICP-MS	R.J.G. Metals	5/22/2008	0.049	< 0.040	0.011	0.10	< 0.0030	0.180	< 0.0030	0.016	0.008	< 0.012	No	No		
5279488	4- Albany St 6th Floor Scaffolding	5/20/2008	7:49 AM	5/21/2008	7:42 AM	1,433	5,016	Metals	NIOSH 7300 Modified ICP-MS	R.J.G. Metals	5/22/2008	0.055	< 0.040	0.015	0.13	< 0.0020	0.112	< 0.0020	0.027	0.014	< 0.012	No	No		
5279496	5- Washington St 6th Floor Scaffolding	5/20/2008	8:03 AM	5/21/2008	7:28 AM	1,405	4,777	Metals	NIOSH 7300 Modified ICP-MS	R.J.G. Metals	5/22/2008	0.048	< 0.042	0.016	0.15	< 0.0021	0.234	< 0.0021	< 0.0021	0.021	0.014	< 0.013	No	No	
5279500	6- Cedar St 6th Floor Scaffolding	5/20/2008	7:31 AM	5/21/2008	7:15 AM	1,424	4,984	Metals	NIOSH 7300 Modified ICP-MS	R.J.G. Metals	5/22/2008	0.032	< 0.040	0.016	0.12	< 0.0030	0.067	< 0.0030	0.030	0.014	< 0.012	No	No		
5279504	7- Washington St 6th Floor Scaffolding	5/20/2008	7:37 AM	5/21/2008	6:48 AM	1,391	5,092	Metals	NIOSH 7300 Modified ICP-MS	R.J.G. Metals	5/22/2008	0.017	< 0.039	0.009	0.13	< 0.0020	0.342	< 0.0020	0.009	0.009	< 0.012	No	No		
5279508	8- Cedar St 6th Floor Scaffolding	5/20/2008	8:40 AM	5/21/2008	7:59 AM	1,399	5,184	Metals	NIOSH 7300 Modified ICP-MS	R.J.G. Metals	5/22/2008	0.031	< 0.039	0.014	0.11	< 0.0019	0.501	< 0.0019	< 0.0019	0.014	0.013	< 0.012	No	No	
5279516	3-90 West Courtyard at 2nd Floor Level	5/21/2008	7:03 AM	5/22/2008	7:09 AM	1,446	5,061	Metals	NIOSH 7300 Modified ICP-MS	R.J.G. Metals	5/23/2008	0.033	0.057	0.014	0.13	< 0.0030	0.033	< 0.0030	0.014	0.011	< 0.012	No	No		
5279520	4- Albany St 6th Floor Scaffolding	5/21/2008	7:45 AM	5/22/2008	7:33 AM	1,428	4,998	Metals	NIOSH 7300 Modified ICP-MS	R.J.G. Metals	5/23/2008	0.034	0.044	0.014	0.11	< 0.0020	0.034	< 0.0020	0.011	0.010	< 0.012	No	No		
5279524	5- Washington St 6th Floor Scaffolding	5/21/2008	8:40 AM	5/22/2008	7:40 AM	1,449	5,072	Metals	NIOSH 7300 Modified ICP-MS	R.J.G. Metals	5/23/2008	0.034	< 0.039	0.016	0.12	< 0.0020	0.036	< 0.0020	< 0.0020	0.012	0.012	< 0.012	No	No	
5279528	6- Cedar St 6th Floor Scaffolding	5/21/2008	7:11 AM	5/22/2008	7:19 AM	1,442	5,047	Metals	NIOSH 7300 Modified ICP-MS	R.J.G. Metals	5/23/2008	0.031	0.049	0.014	0.12	< 0.0030	0.035	< 0.0030	0.011	0.020	< 0.012	No	No		
5279532	7- Washington St 6th Floor Scaffolding	5/21/2008	7:33 AM	5/22/2008	6:36 AM	1,413	5,071	Metals	NIOSH 7300 Modified ICP-MS	R.J.G. Metals	5/23/2008	0.029	0.045	0.010	0.11	< 0.0020	0.042	< 0.0020	0.010	0.020	< 0.012	No	No		
5279540	8- Washington St 9th Floor Scaffolding	5/21/2008	7:30 AM	5/22/2008	7:06 AM	1,414	5,177	Metals	NIOSH 7300 Modified ICP-MS	R.J.G. Metals	5/23/2008	0.027	0.043	0.013	0.10	< 0.0019	0.031	< 0.0019	< 0.0019	0.010	0.010	< 0.012	No	No	
5279536	9- Cedar St 6th Floor Scaffolding	5/21/2008	8:07 AM	5/22/2008	7:33 AM	1,406	5,031	Metals	NIOSH 7300 Modified ICP-MS	R.J.G. Metals	5/23/2008	0.030	0.060	0.016	0.12	< 0.0030	0.038	< 0.0030	0.010	0.012	< 0.012	No	No		
5280515	3-90 West Courtyard at 2nd Floor Level	5/22/2008	7:11 AM	5/23/2008	7:19 AM	1,448	4,851	Metals	NIOSH 7300 Modified ICP-MS	R.J.G. Metals	5/24/2008	0.015	0.048	0.010	0.12	< 0.0021	0.016	< 0.0021	< 0.008	0.008	< 0.012	No	No		
5280511	4- Albany St 6th Floor Scaffolding	5/22/2008	7:35 AM	5/23/2008	7:42 AM	1,447	4,965	Metals	NIOSH 7300 Modified ICP-MS	R.J.G. Metals	5/24/2008	0.013	0.044	0.009	0.11	< 0.0020	0.020	< 0.0020	< 0.008	0.008	< 0.012	No	No		
5280507	5- Washington St 6th Floor Scaffolding	5/22/2008	7:42 AM	5/23/2008	7:51 AM	1,449	5,072	Metals	NIOSH 7300 Modified ICP-MS	R.J.G. Metals	5/24/2008	0.012	0.042	< 0.008	0.10	< 0.0020	0.016	< 0.0020	< 0.008	0.008	< 0.012	No	No		
5280503	6- Cedar St 6th Floor Scaffolding	5/22/2008	8:21 AM	5/23/2008	7:30 AM	1,449	5,072	Metals	NIOSH 7300 Modified ICP-MS	R.J.G. Metals	5/24/2008	0.071	0.058	0.021	0.11	< 0.0020	0.025	< 0.0020	0.010	0.008	< 0.011	No	No		
5280531	7- Washington St 9th Floor Scaffolding	5/22/2008	7:44 AM	5/23/2008	7:01 AM	1,487	5,325	Metals	NIOSH 7300 Modified ICP-MS	R.J.G. Metals	5/24/2008	0.013	< 0.038	0.009	0.10	< 0.0019	0.020	< 0.0019	< 0.0019	0.008	0.008	< 0.011	No	No	
5280523	8- Cedar St 6th Floor Scaffolding	5/22/2008	7:43 AM	5/23/2008	7:28 AM	1,425	5,044	Metals	NIOSH 7300 Modified ICP-MS	R.J.G. Metals	5/24/2008	0.019	< 0.038	0.014	0.10	< 0.0019	0.022	< 0.0019	0.009	0.008	< 0.011	No	No		
5279572	3-90 West Courtyard at 2nd Floor Level	5/23/2008	7:20 AM	5/24/2008	8:12 AM	1,382	5,147	Metals	NIOSH 7300 Modified ICP-MS	R.J.G. Metals	5/27/2008	0.029	< 0.039	0.018	0.12	< 0.0018	0.024	< 0.0018	0.019	0.016	< 0.012	No	No		
5279576	4- Albany St 6th Floor Scaffolding	5/23/2008	7:43 AM	5/24/2008	8:34 AM	1,491	5,293	Metals	NIOSH 7300 Modified ICP-MS	R.J.G. Metals	5/27/2008	0.015	< 0.038	0.010	0.10	< 0.0019	0.013	< 0.0019	< 0.0019	0.008	0.008	< 0.011	No	No	
5279580	5- Washington St 6th Floor Scaffolding	5/23/2008	7:43 AM	5/24/2008	8:43 AM	1,480	5,015	Metals	NIOSH 7300 Modified ICP-MS	R.J.G. Metals	5/27/2008	0.014	< 0.038	0.013	0.10	< 0.0019	0.016	< 0.0019	< 0.0019	0.008	0.008	< 0.012	No	No	
5279584	6- Cedar St 6th Floor Scaffolding	5/23/2008	7:31 AM	5/24/2008	7:44 AM	1,493	5,229	Metals	NIOSH 7300 Modified ICP-MS	R.J.G. Metals	5/27/2008	0.012	0.055	0.011	0.08	< 0.0018	0.012	< 0.0018	< 0.0018	0.008	0.008	< 0.012	No	No	
5279588	7- Washington St 9th Floor Scaffolding	5/23/2008	7:56 AM	5/24/2008	8:04 AM	1,499	4,812	Metals	NIOSH 7300 Modified ICP-MS	R.J.G. Metals	5/27/2008	0.012	0.045	0.009	0.11	< 0.0021	0.012	< 0.0021	< 0.008	0.008	< 0.013	No	No		
5279592	8- Cedar St 6th Floor Scaffolding	5/23/2008	7:30 AM	5/24/2008	8:26 AM	1,486	5,229	Metals	NIOSH 7300 Modified ICP-MS	R.J.G. Metals	5/27/2008	0.012	< 0.038	0.017	0.10	< 0.0019	0.014	< 0.0019	< 0.0019	0.008	0.008	< 0.012	No	No	
5279544	3-90 West Courtyard at 2nd Floor Level	5/24/2008	8:17 AM	5/25/2008	7:50 AM	1,410	4,946	Metals	NIOSH 7300 Modified ICP-MS	R.J.G. Metals	5/28/2008	0.014	0.046	0.009	0.12	< 0.0020	0.012	< 0.0020	< 0.008	0.008	< 0.012	No	No		
5279548	4- Albany St 6th Floor Scaffolding	5/24/2008	8:36 AM	5/25/2008	8:12 AM	1,416	5,027	Metals	NIOSH 7300 Modified ICP-MS	R.J.G. Metals	5/28/2008	0.012	0.043	0.008	0.10	< 0.0									

MasterWorks - 130 Cedar Building, Community Monitoring															
Sample No.	Sampling Location	Collection Start Date	Collection (Time on)	Collection End Date	Collection (Time off)	Total Collection Time, minutes	Volume (liters)	Analysis	Analytical Method	Lab	Lab Sample Receipt Date	Mercury Concentration (ng/m ³)	EPA Site Specific Trigger Level for Mercury (ng/m ³)	Exceeds Target Air quality or EPA Site Specific Level?	Comments
5279431	3 - 90 West Courtyard at 2nd Floor Level	5/18/2008	7:15 AM	5/19/2008	8:03 AM	1,488	588	Mercury	EPA 324/1631 mod.	BRL	05/20/2008	< 5	3,000	No	
5279435	4 - Albany St 6th Floor Scaffolding	5/18/2008	7:26 AM	5/19/2008	8:15 AM	1,489	596	Mercury	EPA 324/1631 mod.	BRL	05/20/2008	< 5	3,000	No	
5279439	5 - Washington St 6th Floor Scaffolding	5/18/2008	7:34 AM	5/19/2008	8:23 AM	1,489	588	Mercury	EPA 324/1631 mod.	BRL	05/20/2008	< 5	3,000	No	
5279443	6 - Cedar St 6th Floor Scaffolding	5/18/2008	7:43 AM	5/19/2008	8:31 AM	1,488	558	Mercury	EPA 324/1631 mod.	BRL	05/20/2008	< 6	3,000	No	
5279447	7 - Roof, East Facade	5/18/2008	7:30 AM	5/19/2008	6:39 AM	1,389	528	Mercury	EPA 324/1631 mod.	BRL	05/20/2008	< 6	3,000	No	
5279451	8 - Roof, North Facade	5/18/2008	7:44 AM	5/19/2008	7:17 AM	1,413	551	Mercury	EPA 324/1631 mod.	BRL	05/20/2008	< 6	3,000	No	
5279459	3 - 90 West Courtyard at 2nd Floor Level	5/19/2008	8:07 AM	5/20/2008	7:14 AM	1,387	548	Mercury	EPA 324/1631 mod.	BRL	05/21/2008	< 6	3,000	No	
5279463	4 - Albany St 6th Floor Scaffolding	5/19/2008	8:19 AM	5/20/2008	7:47 AM	1,408	563	Mercury	EPA 324/1631 mod.	BRL	05/21/2008	< 5	3,000	No	
5279467	5 - Washington St 6th Floor Scaffolding	5/19/2008	8:27 AM	5/20/2008	8:02 AM	1,415	559	Mercury	EPA 324/1631 mod.	BRL	05/21/2008	< 6	3,000	No	
5279471	6 - Cedar St 6th Floor Scaffolding	5/19/2008	8:35 AM	N/A	N/A	N/A	N/A	Mercury	EPA 324/1631 mod.	BRL	N/A	N/A	N/A	N/A	Sample voided in field. Pump failure.
5279475	7 - Roof, East Facade	5/19/2008	6:54 AM	5/20/2008	6:45 AM	1,431	558	Mercury	EPA 324/1631 mod.	BRL	05/21/2008	< 6	3,000	No	
5279479	8 - Roof, North Facade	5/19/2008	7:30 AM	5/19/2008	1:14 PM	344	139	Mercury	EPA 324/1631 mod.	BRL	05/21/2008	< 22	3,000	No	Instrument off-line for portion of the day.
5279487	3 - 90 West Courtyard at 2nd Floor Level	5/20/2008	7:16 AM	5/21/2008	7:00 AM	1,424	498	Mercury	EPA 324/1631 mod.	BRL	05/22/2008	< 6	3,000	No	
5279491	4 - Albany St 6th Floor Scaffolding	5/20/2008	7:49 AM	5/21/2008	7:42 AM	1,433	545	Mercury	EPA 324/1631 mod.	BRL	05/22/2008	< 6	3,000	No	
5279499	5 - Washington St 6th Floor Scaffolding	5/20/2008	8:03 AM	5/21/2008	7:28 AM	1,405	527	Mercury	EPA 324/1631 mod.	BRL	05/22/2008	< 6	3,000	No	
5278503	6 - Cedar St 6th Floor Scaffolding	5/20/2008	7:31 AM	5/21/2008	7:15 AM	1,424	513	Mercury	EPA 324/1631 mod.	BRL	05/22/2008	< 6	3,000	No	
5278507	9 - Washington St 9th Floor Scaffolding	5/20/2008	7:37 AM	5/21/2008	6:48 AM	1,391	543	Mercury	EPA 324/1631 mod.	BRL	05/22/2008	< 6	3,000	No	
5278511	10 - Cedar St 9th Floor Scaffolding	5/20/2008	8:40 AM	5/21/2008	7:59 AM	1,399	532	Mercury	EPA 324/1631 mod.	BRL	05/22/2008	< 6	3,000	No	
5278519	3 - 90 West Courtyard at 2nd Floor Level	5/21/2008	7:03 AM	5/22/2008	7:09 AM	1,446	578	Mercury	EPA 324/1631 mod.	BRL	05/23/2008	< 5	3,000	No	
5278523	4 - Albany St 6th Floor Scaffolding	5/21/2008	7:45 AM	5/22/2008	7:33 AM	1,428	571	Mercury	EPA 324/1631 mod.	BRL	05/23/2008	6	3,000	No	
5278527	5 - Washington St 6th Floor Scaffolding	5/21/2008	7:31 AM	5/22/2008	7:40 AM	1,449	587	Mercury	EPA 324/1631 mod.	BRL	05/23/2008	< 5	3,000	No	
5278531	6 - Cedar St 6th Floor Scaffolding	5/21/2008	7:17 AM	5/22/2008	7:19 AM	1,442	555	Mercury	EPA 324/1631 mod.	BRL	05/23/2008	< 6	3,000	No	
5278535	9 - Washington St 9th Floor Scaffolding	5/21/2008	7:03 AM	5/22/2008	6:36 AM	1,413	558	Mercury	EPA 324/1631 mod.	BRL	05/23/2008	< 6	3,000	No	
5278563	9 - Washington St 9th Floor Scaffolding	5/21/2008	7:32 AM	5/22/2008	7:06 AM	1,414	566	Mercury	EPA 324/1631 mod.	BRL	05/23/2008	10	3,000	No	
5278539	10 - Cedar St 9th Floor Scaffolding	5/21/2008	8:07 AM	5/22/2008	7:33 AM	1,406	548	Mercury	EPA 324/1631 mod.	BRL	05/23/2008	< 6	3,000	No	
5280518	3 - 90 West Courtyard at 2nd Floor Level	5/22/2008	7:11 AM	5/23/2008	7:19 AM	1,448	572	Mercury	EPA 324/1631 mod.	BRL	05/27/2008	< 5	3,000	No	
5280514	4 - Albany St 6th Floor Scaffolding	5/22/2008	7:35 AM	5/23/2008	7:42 AM	1,447	579	Mercury	EPA 324/1631 mod.	BRL	05/27/2008	< 5	3,000	No	
5280510	5 - Washington St 6th Floor Scaffolding	5/22/2008	7:42 AM	5/23/2008	7:51 AM	1,449	580	Mercury	EPA 324/1631 mod.	BRL	05/27/2008	< 5	3,000	No	
5280506	6 - Cedar St 6th Floor Scaffolding	5/22/2008	7:21 AM	5/23/2008	7:30 AM	1,449	572	Mercury	EPA 324/1631 mod.	BRL	05/27/2008	< 5	3,000	No	
5280534	9 - Washington St 9th Floor Scaffolding	5/22/2008	6:44 AM	5/23/2008	7:01 AM	1,457	583	Mercury	EPA 324/1631 mod.	BRL	05/27/2008	< 5	3,000	No	
5280526	10 - Cedar St 9th Floor Scaffolding	5/22/2008	7:43 AM	5/23/2008	8:28 AM	1,425	549	Mercury	EPA 324/1631 mod.	BRL	05/27/2008	< 6	3,000	No	
5278575	3 - 90 West Courtyard at 2nd Floor Level	5/23/2008	7:20 AM	5/24/2008	7:12 AM	1,492	589	Mercury	EPA 324/1631 mod.	BRL	05/27/2008	< 5	3,000	No	
5278579	4 - Albany St 6th Floor Scaffolding	5/23/2008	7:43 AM	5/24/2008	8:34 AM	1,491	596	Mercury	EPA 324/1631 mod.	BRL	05/27/2008	< 5	3,000	No	
5278583	5 - Washington St 6th Floor Scaffolding	5/23/2008	7:53 AM	5/24/2008	8:43 AM	1,490	604	Mercury	EPA 324/1631 mod.	BRL	05/27/2008	< 5	3,000	No	
5278587	6 - Cedar St 6th Floor Scaffolding	5/23/2008	7:31 AM	5/24/2008	8:24 AM	1,493	597	Mercury	EPA 324/1631 mod.	BRL	05/27/2008	< 5	3,000	No	
5278591	9 - Washington St 9th Floor Scaffolding	5/23/2008	7:05 AM	N/A	N/A	N/A	N/A	Mercury	EPA 324/1631 mod.	BRL	N/A	N/A	N/A	N/A	Sample voided in field. Pump failure.
5278595	10 - Cedar St 9th Floor Scaffolding	5/23/2008	7:30 AM	5/24/2008	8:26 AM	1,496	583	Mercury	EPA 324/1631 mod.	BRL	05/27/2008	< 5	3,000	No	
5278547	3 - 90 West Courtyard at 2nd Floor Level	5/24/2008	8:13 AM	5/25/2008	7:50 AM	1,417	560	Mercury	EPA 324/1631 mod.	BRL	05/28/2008	< 6	3,000	No	
5278551	4 - Albany St 6th Floor Scaffolding	5/24/2008	8:36 AM	5/25/2008	8:12 AM	1,416	566	Mercury	EPA 324/1631 mod.	BRL	05/28/2008	< 5	3,000	No	
5278555	5 - Washington St 6th Floor Scaffolding	5/24/2008	8:45 AM	5/25/2008	8:21 AM	1,416	566	Mercury	EPA 324/1631 mod.	BRL	05/28/2008	< 5	3,000	No	
5278559	6 - Cedar St 6th Floor Scaffolding	5/24/2008	8:26 AM	5/25/2008	8:04 AM	1,418	567	Mercury	EPA 324/1631 mod.	BRL	05/28/2008	< 5	3,000	No	
5278567	9 - Washington St 9th Floor Scaffolding	5/24/2008	8:07 AM	5/25/2008	7:36 AM	1,409	564	Mercury	EPA 324/1631 mod.	BRL	05/28/2008	< 5	3,000	No	
5278666	10 - Cedar St 9th Floor Scaffolding	5/24/2008	8:29 AM	5/25/2008	7:54 AM	1,405	534	Mercury	EPA 324/1631 mod.	BRL	05/28/2008	< 6	3,000	No	

MasterWorks - 130 Cedar Building, Community Monitoring																
Sample No.	Sampling Location	Collection Start Date	Collection (Time on)	Collection Date	Collection (Time off)	Total Collection Time, minutes	Volume (liters)	Analysis	Analytical Method	Lab	Lab Sample Receipt Date	Asbestos Concentration (f/cc)	MMVF Concentration (f/cc)	EPA Site Specific Trigger Level	Exceeds EPA Site Specific Trigger Level?	Comments
5279430	3 - 90 West Courtyard at 2nd Floor Level	5/18/2008	7:15 AM	5/19/2008	8:03 AM	1,488	4,390	Asbestos PCME fibers	ISO 14966 mod	RJLG SEM	5/20/2008	<0.00005	<0.00005	0.0009 f/cc	No	
5279434	4 - Albany St 6th Floor Scaffolding	5/18/2008	7:26 AM	5/19/2008	8:15 AM	1,489	4,281	Asbestos PCME fibers	ISO 14966 mod	RJLG SEM	5/20/2008	<0.00005	<0.00005	0.0009 f/cc	No	
5279438	5 - Washington St 6th Floor Scaffolding	5/18/2008	7:34 AM	5/19/2008	8:23 AM	1,489	4,467	Asbestos PCME fibers	ISO 14966 mod	RJLG SEM	5/20/2008	<0.00005	<0.00005	0.0009 f/cc	No	
5279442	6 - Cedar St 6th Floor Scaffolding	5/18/2008	7:43 AM	5/19/2008	8:31 AM	1,488	4,315	Asbestos PCME fibers	ISO 14966 mod	RJLG SEM	5/20/2008	<0.00005	<0.00005	0.0009 f/cc	No	
5279446	7 - Roof, East Facade	5/18/2008	7:30 AM	5/19/2008	6:39 AM	1,389	3,850	Asbestos PCME fibers	ISO 14966 mod	RJLG SEM	5/20/2008	<0.00005	<0.00005	0.0009 f/cc	No	
5279450	8 - Roof, North Facade	5/18/2008	7:44 AM	5/19/2008	7:17 AM	1,413	4,137	Asbestos PCME fibers	ISO 14966 mod	RJLG SEM	5/20/2008	<0.00005	<0.00005	0.0009 f/cc	No	
5279458	3 - 90 West Courtyard at 2nd Floor Level	5/19/2008	8:07 AM	5/20/2008	7:14 AM	1,387	4,092	Asbestos PCME fibers	ISO 14966 mod	RJLG SEM	5/21/2008	<0.00005	0.00005	0.0009 f/cc	No	
5279462	4 - Albany St 6th Floor Scaffolding	5/19/2008	8:19 AM	5/20/2008	7:47 AM	1,408	4,294	Asbestos PCME fibers	ISO 14966 mod	RJLG SEM	5/21/2008	<0.00005	<0.00005	0.0009 f/cc	No	
5279466	5 - Washington St 6th Floor Scaffolding	5/19/2008	8:27 AM	5/20/2008	8:02 AM	1,415	4,316	Asbestos PCME fibers	ISO 14966 mod	RJLG SEM	5/21/2008	<0.00005	0.00009	0.0009 f/cc	No	
5279470	6 - Cedar St 6th Floor Scaffolding	5/19/2008	8:35 AM	5/20/2008	7:29 AM	1,374	4,122	Asbestos PCME fibers	ISO 14966 mod	RJLG SEM	5/21/2008	<0.00005	0.00005	0.0009 f/cc	No	
5279474	7 - Roof, East Facade	5/19/2008	6:54 AM	5/20/2008	6:45 AM	1,431	4,593	Asbestos PCME fibers	ISO 14966 mod	RJLG SEM	5/21/2008	<0.00004	<0.00004	0.0009 f/cc	No	
5279478	8 - Roof, North Facade	5/19/2008	7:30 AM	5/20/2008	2:43 AM	1,153	3,509	Asbestos PCME fibers	ISO 14966 mod	RJLG SEM	5/21/2008	<0.00006	<0.00006	0.0009 f/cc	No	Estimated volume - off time adjusted to account for electrical problems during afternoon.
5279486	3 - 90 West Courtyard at 2nd Floor Level	5/20/2008	7:16 AM	5/21/2008	7:00 AM	1,424	4,201	Asbestos PCME fibers	ISO 14966 mod	RJLG SEM	5/22/2008	<0.00005	<0.00005	0.0009 f/cc	No	
5279490	4 - Albany St 6th Floor Scaffolding	5/20/2008	7:49 AM	5/21/2008	7:42 AM	1,433	4,084	Asbestos PCME fibers	ISO 14966 mod	RJLG SEM	5/22/2008	<0.00005	<0.00005	0.0009 f/cc	No	
5279498	5 - Washington St 6th Floor Scaffolding	5/20/2008	8:03 AM	5/21/2008	7:28 AM	1,405	3,794	Asbestos PCME fibers	ISO 14966 mod	RJLG SEM	5/22/2008	<0.00005	<0.00005	0.0009 f/cc	No	
5278502	6 - Cedar St 6th Floor Scaffolding	5/20/2008	7:31 AM	5/21/2008	7:15 AM	1,424	4,272	Asbestos PCME fibers	ISO 14966 mod	RJLG SEM	5/22/2008	<0.00005	<0.00005	0.0009 f/cc	No	
5278506	9 - Washington St 9th Floor Scaffolding	5/20/2008	7:37 AM	5/21/2008	6:48 AM	1,391	4,244	Asbestos PCME fibers	ISO 14966 mod	RJLG SEM	5/22/2008	<0.00005	<0.00005	0.0009 f/cc	No	
5278510	10 - Cedar St 9th Floor Scaffolding	5/20/2008	8:40 AM	5/21/2008	7:59 AM	1,399	4,546	Asbestos PCME fibers	ISO 14966 mod	RJLG SEM	5/22/2008	<0.00004	<0.00004	0.0009 f/cc	No	
5278518	3 - 90 West Courtyard at 2nd Floor Level	5/21/2008	7:03 AM	5/22/2008	7:09 AM	1,446	4,338	Asbestos PCME fibers	ISO 14966 mod	RJLG SEM	5/23/2008	<0.00005	<0.00005	0.0009 f/cc	No	
5278522	4 - Albany St 6th Floor Scaffolding	5/21/2008	7:45 AM	5/22/2008	7:33 AM	1,428	4,284	Asbestos PCME fibers	ISO 14966 mod	RJLG SEM	5/23/2008	<0.00005	<0.00005	0.0009 f/cc	No	
5278526	5 - Washington St 6th Floor Scaffolding	5/21/2008	7:31 AM	5/22/2008	7:40 AM	1,449	4,347	Asbestos PCME fibers	ISO 14966 mod	RJLG SEM	5/23/2008	<0.00005	<0.00005	0.0009 f/cc	No	
5278530	6 - Cedar St 6th Floor Scaffolding	5/21/2008	7:17 AM	5/22/2008	7:19 AM	1,442	4,398	Asbestos PCME fibers	ISO 14966 mod	RJLG SEM	5/23/2008	<0.00005	<0.00005	0.0009 f/cc	No	
5278534	9 - Washington St 9th Floor Scaffolding	5/21/2008	7:03 AM	5/22/2008	6:36 AM	1,413	4,433	Asbestos PCME fibers	ISO 14966 mod	RJLG SEM	5/23/2008	<0.00005	<0.00005	0.0009 f/cc	No	
5278562	9 - Washington St 9th Floor Scaffolding	5/21/2008	7:32 AM	5/22/2008	7:06 AM	1,414	4,592	Asbestos PCME fibers	ISO 14966 mod	RJLG SEM	5/23/2008	<0.00004	<0.00004	0.0009 f/cc	No	
5278538	10 - Cedar St 9th Floor Scaffolding	5/21/2008	8:07 AM	5/22/2008	7:33 AM	1,406	4,222	Asbestos PCME fibers	ISO 14966 mod	RJLG SEM	5/23/2008	<0.00005	<0.00005	0.0009 f/cc	No	
5280517	3 - 90 West Courtyard at 2nd Floor Level	5/22/2008	7:11 AM	5/23/2008	7:19 AM	1,448	4,344	Asbestos PCME fibers	ISO 14966 mod	RJLG SEM	5/24/2008	<0.00005	<0.00005	0.0009 f/cc	No	
5280513	4 - Albany St 6th Floor Scaffolding	5/22/2008	7:35 AM	5/23/2008	7:42 AM	1,447	4,341	Asbestos PCME fibers	ISO 14966 mod	RJLG SEM	5/24/2008	<0.00005	<0.00005	0.0009 f/cc	No	
5280509	5 - Washington St 6th Floor Scaffolding	5/22/2008	7:42 AM	5/23/2008	7:51 AM	1,449	4,420	Asbestos PCME fibers	ISO 14966 mod	RJLG SEM	5/24/2008	<0.00005	<0.00005	0.0009 f/cc	No	
5280505	6 - Cedar St 6th Floor Scaffolding	5/22/2008	7:21 AM	5/23/2008	7:30 AM	1,449	4,420	Asbestos PCME fibers	ISO 14966 mod	RJLG SEM	5/24/2008	<0.00005	<0.00005	0.0009 f/cc	No	
5280533	9 - Washington St 9th Floor Scaffolding	5/22/2008	6:44 AM	5/23/2008	7:01 AM	1,457	4,378	Asbestos PCME fibers	ISO 14966 mod	RJLG SEM	5/24/2008	<0.00005	<0.00005	0.0009 f/cc	No	
5280525	10 - Cedar St 9th Floor Scaffolding	5/22/2008	7:43 AM	5/23/2008	7:28 AM	1,425	4,400	Asbestos PCME fibers	ISO 14966 mod	RJLG SEM	5/24/2008	<0.00005	<0.00005	0.0009 f/cc	No	
5278574	3 - 90 West Courtyard at 2nd Floor Level	5/23/2008	7:20 AM	5/24/2008	8:12 AM	1,492	4,476	Asbestos PCME fibers	ISO 14966 mod	RJLG SEM	5/27/2008	<0.00005	<0.00005	0.0009 f/cc	No	
5278578	4 - Albany St 6th Floor Scaffolding	5/23/2008	7:43 AM	5/24/2008	8:34 AM	1,491	4,473	Asbestos PCME fibers	ISO 14966 mod	RJLG SEM	5/27/2008	<0.00005	<0.00005	0.0009 f/cc	No	
5278582	5 - Washington St 6th Floor Scaffolding	5/23/2008	7:53 AM	5/24/2008	8:43 AM	1,490	4,470	Asbestos PCME fibers	ISO 14966 mod	RJLG SEM	5/27/2008	<0.00005	<0.00005	0.0009 f/cc	No	
5278586	6 - Cedar St 6th Floor Scaffolding	5/23/2008	7:31 AM	5/24/2008	8:24 AM	1,493	4,554	Asbestos PCME fibers	ISO 14966 mod	RJLG SEM	5/27/2008	<0.00004	<0.00004	0.0009 f/cc	No	
5278590	9 - Washington St 9th Floor Scaffolding	5/23/2008	7:05 AM	5/24/2008	8:04 AM	1,499	4,422	Asbestos PCME fibers	ISO 14966 mod	RJLG SEM	5/27/2008	<0.00005	<0.00005	0.0009 f/cc	No	
5278594	10 - Cedar St 9th Floor Scaffolding	5/23/2008	7:30 AM	5/24/2008	8:26 AM	1,496	4,488	Asbestos PCME fibers	ISO 14966 mod	RJLG SEM	5/27/2008	<0.00005	<0.00005	0.0009 f/cc	No	
5278546	3 - 90 West Courtyard at 2nd Floor Level	5/24/2008	8:13 AM	5/25/2008	7:50 AM	1,417	4,180	Asbestos PCME fibers	ISO 14966 mod	RJLG SEM	5/28/2008	<0.00005	<0.00005	0.0009 f/cc	No	
5278550	4 - Albany St 6th Floor Scaffolding	5/24/2008	8:36 AM	5/25/2008	8:12 AM	1,416	4,248	Asbestos PCME fibers	ISO 14966 mod	RJLG SEM	5/28/2008	<0.00005	<0.00005	0.0009 f/cc	No	
5278554	5 - Washington St 6th Floor Scaffolding	5/24/2008	8:45 AM	5/25/2008	8:21 AM	1,416	4,248	Asbestos PCME fibers	ISO 14966 mod	RJLG SEM	5/28/2008	<0.00005	<0.00005	0.0009 f/cc	No	
5278558	6 - Cedar St 6th Floor Scaffolding	5/24/2008	8:26 AM	5/25/2008	8:04 AM	1,418	4,254	Asbestos PCME fibers	ISO 14966 mod	RJLG SEM	5/28/2008	<0.00005	<0.00005	0.0009 f/cc	No	
5278566	9 - Washington St 9th Floor Scaffolding	5/24/2008	8:07 AM	5/25/2008	7:36 AM	1,409	4,298	Asbestos PCME fibers	ISO 14966 mod	RJLG SEM	5/28/2008	<0.00005	<0.00005	0.0009 f/cc	No	
5278665	10 - Cedar St 9th Floor Scaffolding	5/24/2008	8:28 AM	5/25/2008	7:54 AM	1,406	4,218	Asbestos PCME fibers	ISO 14966 mod	RJLG SEM	5/28/2008	<0.00005	<0.00005	0.0009 f/cc	No	

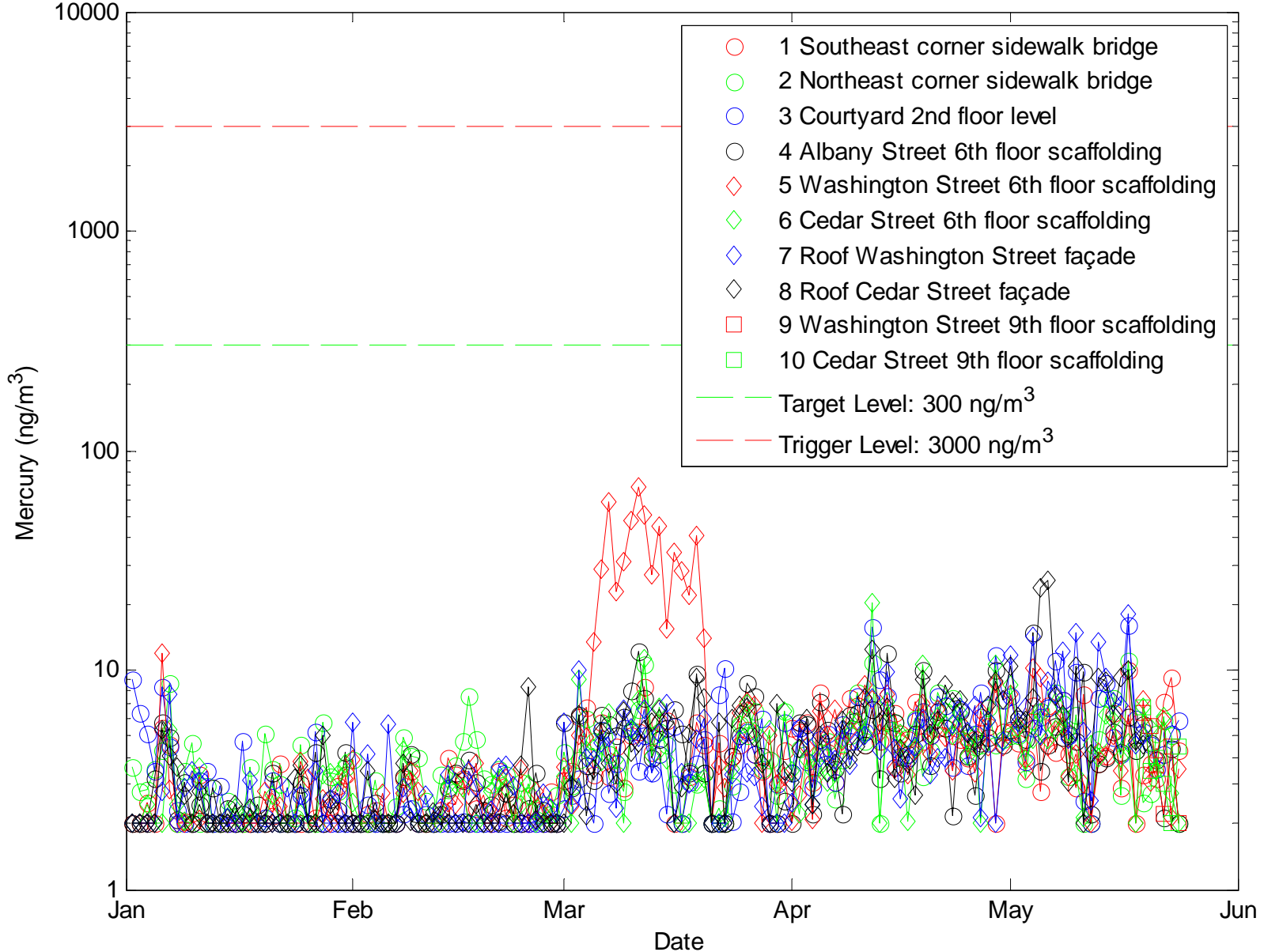
Sample No.	Sampling Location	Collection Start Date	Collection (Time on)	Collection End Date	Collection (Time off)	Total collection time, minutes	Sample Volume (liters)	Analyte	Analytical Method	Lab	Lab Sample Receipt Date	Respirable Dust Concentration (mg/m ³)	Respirable Quartz Concentration (mg/m ³)	Target Air Quality Level for Respirable Quartz (mg/m ³)	EPA Site Specific Trigger Level for Respirable Quartz (mg/m ³)	Exceeds Target Air Quality or EPA Site Specific Level?	Comments
5279429	3 - 90 West Courtyard at 2nd Floor Level	5/18/2008	7:15 AM	5/19/2008	8:03 AM	1,488	3,720	Dust and Quartz	NIOSH 0600/7500	RJLG XRD	5/20/2008	< 0.027	< 0.001	0.01	0.01	No	
5279433	4 - Albany St 6th Floor Scaffolding	5/18/2008	7:26 AM	5/19/2008	8:15 AM	1,489	3,574	Dust and Quartz	NIOSH 0600/7500	RJLG XRD	5/20/2008	< 0.028	< 0.001	0.01	0.01	No	
5279437	5 - Washington St 6th Floor Scaffolding	5/18/2008	7:34 AM	5/19/2008	8:23 AM	1,489	3,574	Dust and Quartz	NIOSH 0600/7500	RJLG XRD	5/20/2008	< 0.028	< 0.001	0.01	0.01	No	
5279441	6 - Cedar St 6th Floor Scaffolding	5/18/2008	7:43 AM	5/19/2008	8:31 AM	1,488	3,646	Dust and Quartz	NIOSH 0600/7500	RJLG XRD	5/20/2008	< 0.027	< 0.001	0.01	0.01	No	
5279445	7 - Roof, East Facade	5/18/2008	7:30 AM	5/19/2008	8:39 AM	1,389	3,681	Dust and Quartz	NIOSH 0600/7500	RJLG XRD	5/20/2008	< 0.027	< 0.001	0.01	0.01	No	
5279449	8 - Roof, North Facade	5/18/2008	7:44 AM	5/19/2008	7:17 AM	1,413	3,462	Dust and Quartz	NIOSH 0600/7500	RJLG XRD	5/20/2008	< 0.029	< 0.001	0.01	0.01	No	
5279457	3 - 90 West Courtyard at 2nd Floor Level	5/19/2008	8:07 AM	5/20/2008	7:14 AM	1,387	3,468	Dust and Quartz	NIOSH 0600/7500	RJLG XRD	5/21/2008	< 0.029	< 0.001	0.01	0.01	No	
5279461	4 - Albany St 6th Floor Scaffolding	5/19/2008	8:19 AM	5/20/2008	7:47 AM	1,408	3,731	Dust and Quartz	NIOSH 0600/7500	RJLG XRD	5/21/2008	< 0.027	< 0.001	0.01	0.01	No	
5279465	5 - Washington St 6th Floor Scaffolding	5/19/2008	8:27 AM	5/20/2008	8:02 AM	1,415	3,538	Dust and Quartz	NIOSH 0600/7500	RJLG XRD	5/21/2008	< 0.028	< 0.001	0.01	0.01	No	
5279469	6 - Cedar St 6th Floor Scaffolding	5/19/2008	8:35 AM	5/20/2008	7:29 AM	1,374	3,366	Dust and Quartz	NIOSH 0600/7500	RJLG XRD	5/21/2008	< 0.030	< 0.001	0.01	0.01	No	
5279473	7 - Roof, East Facade	5/19/2008	6:54 AM	5/20/2008	6:45 AM	1,431	3,649	Dust and Quartz	NIOSH 0600/7500	RJLG XRD	5/21/2008	< 0.027	< 0.001	0.01	0.01	No	
5279477	8 - Roof, North Facade	5/19/2008	7:30 AM	5/20/2008	2:43 AM	1,153	2,940	Dust and Quartz	NIOSH 0600/7500	RJLG XRD	5/21/2008	< 0.034	< 0.002	0.01	0.01	No	Estimated volume - off time adjusted to account for electrical problems during afternoon.
5279485	3 - 90 West Courtyard at 2nd Floor Level	5/20/2008	7:16 AM	5/21/2008	7:03 AM	1,424	3,560	Dust and Quartz	NIOSH 0600/7500	RJLG XRD	5/22/2008	< 0.028	< 0.001	0.01	0.01	No	
5279489	4 - Albany St 6th Floor Scaffolding	5/20/2008	7:49 AM	5/21/2008	7:42 AM	1,433	3,439	Dust and Quartz	NIOSH 0600/7500	RJLG XRD	5/22/2008	< 0.029	< 0.001	0.01	0.01	No	
5279497	5 - Washington St 6th Floor Scaffolding	5/20/2008	8:03 AM	5/21/2008	7:28 AM	1,405	3,513	Dust and Quartz	NIOSH 0600/7500	RJLG XRD	5/22/2008	< 0.028	< 0.001	0.01	0.01	No	
5278501	6 - Cedar St 6th Floor Scaffolding	5/20/2008	7:31 AM	5/21/2008	7:15 AM	1,424	3,580	Dust and Quartz	NIOSH 0600/7500	RJLG XRD	5/22/2008	< 0.028	< 0.001	0.01	0.01	No	
5278505	7 - Washington St 9th Floor Scaffolding	5/20/2008	7:37 AM	5/21/2008	6:48 AM	1,391	3,547	Dust and Quartz	NIOSH 0600/7500	RJLG XRD	5/22/2008	< 0.028	< 0.001	0.01	0.01	No	
5278509	10 - Cedar St 6th Floor Scaffolding	5/20/2008	8:40 AM	5/21/2008	7:59 AM	1,399	3,707	Dust and Quartz	NIOSH 0600/7500	RJLG XRD	5/22/2008	< 0.027	< 0.001	0.01	0.01	No	
5278517	3 - 90 West Courtyard at 2nd Floor Level	5/21/2008	7:03 AM	5/22/2008	7:09 AM	1,446	3,615	Dust and Quartz	NIOSH 0600/7500	RJLG XRD	5/23/2008	< 0.028	< 0.001	0.01	0.01	No	
5278521	4 - Albany St 6th Floor Scaffolding	5/21/2008	7:45 AM	5/22/2008	7:33 AM	1,428	3,427	Dust and Quartz	NIOSH 0600/7500	RJLG XRD	5/23/2008	0.030	< 0.001	0.01	0.01	No	
5278525	5 - Washington St 6th Floor Scaffolding	5/21/2008	7:31 AM	5/22/2008	7:40 AM	1,449	3,695	Dust and Quartz	NIOSH 0600/7500	RJLG XRD	5/23/2008	< 0.027	< 0.001	0.01	0.01	No	
5278529	6 - Cedar St 6th Floor Scaffolding	5/21/2008	7:17 AM	5/22/2008	7:19 AM	1,442	3,677	Dust and Quartz	NIOSH 0600/7500	RJLG XRD	5/23/2008	< 0.027	< 0.001	0.01	0.01	No	
5278533	9 - Washington St 9th Floor Scaffolding	5/21/2008	7:03 AM	5/22/2008	6:38 AM	1,413	3,745	Dust and Quartz	NIOSH 0600/7500	RJLG XRD	5/23/2008	< 0.027	< 0.001	0.01	0.01	No	
5278561	9 - Washington St 9th Floor Scaffolding	5/21/2008	7:02 AM	5/22/2008	7:06 AM	1,414	3,535	Dust and Quartz	NIOSH 0600/7500	RJLG XRD	5/23/2008	< 0.028	< 0.001	0.01	0.01	No	
5278537	10 - Cedar St 9th Floor Scaffolding	5/21/2008	8:37 AM	5/22/2008	7:33 AM	1,406	3,515	Dust and Quartz	NIOSH 0600/7500	RJLG XRD	5/23/2008	< 0.028	< 0.001	0.01	0.01	No	
5280516	3 - 90 West Courtyard at 2nd Floor Level	5/22/2008	7:11 AM	5/23/2008	7:19 AM	1,448	3,620	Dust and Quartz	NIOSH 0600/7500	RJLG XRD	5/24/2008	< 0.028	< 0.001	0.01	0.01	No	
5280512	4 - Albany St 6th Floor Scaffolding	5/22/2008	7:35 AM	5/23/2008	7:42 AM	1,447	3,690	Dust and Quartz	NIOSH 0600/7500	RJLG XRD	5/24/2008	< 0.027	< 0.001	0.01	0.01	No	
5280508	5 - Washington St 6th Floor Scaffolding	5/22/2008	7:42 AM	5/23/2008	7:51 AM	1,449	3,623	Dust and Quartz	NIOSH 0600/7500	RJLG XRD	5/24/2008	< 0.028	< 0.001	0.01	0.01	No	
5280504	6 - Cedar St 6th Floor Scaffolding	5/22/2008	7:21 AM	5/23/2008	7:30 AM	1,449	3,695	Dust and Quartz	NIOSH 0600/7500	RJLG XRD	5/24/2008	< 0.027	< 0.001	0.01	0.01	No	
5280532	9 - Washington St 9th Floor Scaffolding	5/22/2008	6:44 AM	5/23/2008	7:01 AM	1,457	3,643	Dust and Quartz	NIOSH 0600/7500	RJLG XRD	5/24/2008	< 0.027	< 0.001	0.01	0.01	No	
5280524	10 - Cedar St 9th Floor Scaffolding	5/22/2008	7:43 AM	5/23/2008	7:28 AM	1,425	3,634	Dust and Quartz	NIOSH 0600/7500	RJLG XRD	5/24/2008	< 0.028	< 0.001	0.01	0.01	No	
5278573	3 - 90 West Courtyard at 2nd Floor Level	5/23/2008	7:20 AM	5/24/2008	8:12 AM	1,492	3,730	Dust and Quartz	NIOSH 0600/7500	RJLG XRD	5/27/2008	< 0.027	< 0.001	0.01	0.01	No	
5278577	4 - Albany St 6th Floor Scaffolding	5/23/2008	7:43 AM	5/24/2008	8:34 AM	1,491	3,578	Dust and Quartz	NIOSH 0600/7500	RJLG XRD	5/27/2008	< 0.028	< 0.001	0.01	0.01	No	
5278581	5 - Washington St 6th Floor Scaffolding	5/23/2008	7:53 AM	5/24/2008	8:43 AM	1,490	3,725	Dust and Quartz	NIOSH 0600/7500	RJLG XRD	5/27/2008	< 0.027	< 0.001	0.01	0.01	No	
5278585	6 - Cedar St 6th Floor Scaffolding	5/23/2008	7:31 AM	5/24/2008	8:24 AM	1,493	3,882	Dust and Quartz	NIOSH 0600/7500	RJLG XRD	5/27/2008	< 0.026	< 0.001	0.01	0.01	No	
5278589	9 - Washington St 9th Floor Scaffolding	5/23/2008	7:05 AM	5/24/2008	8:04 AM	1,499	4,047	Dust and Quartz	NIOSH 0600/7500	RJLG XRD	5/27/2008	< 0.025	< 0.001	0.01	0.01	No	
5278593	10 - Cedar St 9th Floor Scaffolding	5/23/2008	7:30 AM	5/24/2008	8:28 AM	1,498	3,815	Dust and Quartz	NIOSH 0600/7500	RJLG XRD	5/27/2008	< 0.026	< 0.001	0.01	0.01	No	
5278545	3 - 90 West Courtyard at 2nd Floor Level	5/24/2008	8:13 AM	5/25/2008	7:50 AM	1,417	3,543	Dust and Quartz	NIOSH 0600/7500	RJLG XRD	5/28/2008	< 0.028	< 0.001	0.01	0.01	No	
5278549	4 - Albany St 6th Floor Scaffolding	5/24/2008	8:36 AM	5/25/2008	8:12 AM	1,416	3,328	Dust and Quartz	NIOSH 0600/7500	RJLG XRD	5/28/2008	< 0.030	< 0.001	0.01	0.01	No	
5278553	5 - Washington St 6th Floor Scaffolding	5/24/2008	8:45 AM	5/25/2008	8:21 AM	1,416	3,540	Dust and Quartz	NIOSH 0600/7500	RJLG XRD	5/28/2008	< 0.028	< 0.001	0.01	0.01	No	
5278557	6 - Cedar St 6th Floor Scaffolding	5/24/2008	8:26 AM	5/25/2008	8:04 AM	1,418	3,545	Dust and Quartz	NIOSH 0600/7500	RJLG XRD	5/28/2008	< 0.028	< 0.001	0.01	0.01	No	
5278565	9 - Washington St 9th Floor Scaffolding	5/24/2008	8:07 AM	5/25/2008	7:36 AM	1,409	3,523	Dust and Quartz	NIOSH 0600/7500	RJLG XRD	5/28/2008	< 0.028	< 0.001	0.01	0.01	No	
5278664	10 - Cedar St 9th Floor Scaffolding	5/24/2008	8:29 AM	5/25/2008	7:54 AM	1,405	3,513	Dust and Quartz	NIOSH 0600/7500	RJLG XRD	5/28/2008	< 0.028	< 0.001	0.01	0.01	No	

MasterWorks - 130 Cedar Building, Community Monitoring										Lab Sample Receipt Date	PM _{2.5} Avg. Concentration (µg/m ³)	EPA Site Specific Trigger Level for PM _{2.5} (µg/m ³)	Exceeds Target Air Quality or EPA Site Specific Level?	Comments
Sample No.	Sampling Location	Collection Start Date	Collection (Time on)	Collection (Time off)	Total Collection Time, minutes	Analysis	Analytical Method	Instrument						
N/A	3 - Courtyard, 2nd Floor Level	5/18/2008	12:00 AM	5/19/2008	12:00 AM	1,440	PM _{2.5}	Direct Read	Met One E-BAM Unit # G4526	N/A	14	65	No	
N/A	4 - Albany St 6th Floor Level Scaffolding	5/18/2008	12:00 AM	5/19/2008	12:00 AM	1,440	PM _{2.5}	Direct Read	Met One E-BAM Unit # G4728	N/A	14	65	No	
N/A	5 - Washington St 6th Floor Level Scaffolding	5/18/2008	12:00 AM	5/19/2008	12:00 AM	1,440	PM _{2.5}	Direct Read	Met One E-BAM Unit # G4729	N/A	14	65	No	
N/A	6 - Cedar St 6th Floor Level Scaffolding	5/18/2008	12:00 AM	5/19/2008	12:00 AM	1,440	PM _{2.5}	Direct Read	Met One E-BAM Unit # G4527	N/A	14	65	No	
N/A	7 - Roof, East	5/18/2008	12:00 AM	5/19/2008	12:00 AM	1,440	PM _{2.5}	Direct Read	Met One E-BAM Unit # F5001	N/A	18	65	No	
N/A	8 - Roof, North	5/18/2008	12:00 AM	5/19/2008	12:00 AM	1,440	PM _{2.5}	Direct Read	Met One E-BAM Unit # E3364	N/A	8	65	No	
N/A	3 - Courtyard, 2nd Floor Level	5/19/2008	12:00 AM	5/20/2008	12:00 AM	1,440	PM _{2.5}	Direct Read	Met One E-BAM Unit # G4526	N/A	9	65	No	
N/A	4 - Albany St 6th Floor Level Scaffolding	5/19/2008	12:00 AM	5/20/2008	12:00 AM	1,440	PM _{2.5}	Direct Read	Met One E-BAM Unit # G4728	N/A	8	65	No	
N/A	5 - Washington St 6th Floor Level Scaffolding	5/19/2008	12:00 AM	5/20/2008	12:00 AM	1,440	PM _{2.5}	Direct Read	Met One E-BAM Unit # G4729	N/A	7	65	No	
N/A	6 - Cedar St 6th Floor Level Scaffolding	5/19/2008	12:00 AM	5/20/2008	12:00 AM	1,330	PM _{2.5}	Direct Read	Met One E-BAM Unit # G4527	N/A	10	65	No	Instrument off-line for portion of the day. Concentration is not a 24 hr. average
N/A	9 - 9th Floor Scaffolding, Washington Street Façade	5/19/2008	12:00 AM	5/20/2008	12:00 AM	845	PM _{2.5}	Direct Read	Met One E-BAM Unit # F5001	N/A	13	65	No	Instrument off-line - new location set up. Concentration is not a 24 hr. average
N/A	10 - 9th Floor Scaffolding, Cedar Street Façade	5/19/2008	12:00 AM	5/20/2008	12:00 AM	1,285	PM _{2.5}	Direct Read	Met One E-BAM Unit # E3364	N/A	13	65	No	Instrument off-line for portion of the day. Concentration is not a 24 hr. average
N/A	3 - Courtyard, 2nd Floor Level	5/20/2008	12:00 AM	5/21/2008	12:00 AM	1,440	PM _{2.5}	Direct Read	Met One E-BAM Unit # G4526	N/A	19	65	No	
N/A	4 - Albany St 6th Floor Level Scaffolding	5/20/2008	12:00 AM	5/21/2008	12:00 AM	1,440	PM _{2.5}	Direct Read	Met One E-BAM Unit # G4728	N/A	21	65	No	
N/A	5 - Washington St 6th Floor Level Scaffolding	5/20/2008	12:00 AM	5/21/2008	12:00 AM	1,440	PM _{2.5}	Direct Read	Met One E-BAM Unit # G4729	N/A	18	65	No	
N/A	6 - Cedar St 6th Floor Level Scaffolding	5/20/2008	12:00 AM	5/21/2008	12:00 AM	1,440	PM _{2.5}	Direct Read	Met One E-BAM Unit # G4527	N/A	24	65	No	
N/A	9 - 9th Floor Scaffolding, Washington Street Façade	5/20/2008	12:00 AM	5/21/2008	12:00 AM	1,440	PM _{2.5}	Direct Read	Met One E-BAM Unit # F5001	N/A	18	65	No	
N/A	10 - 9th Floor Scaffolding, Cedar Street Façade	5/20/2008	12:00 AM	5/21/2008	12:00 AM	1,440	PM _{2.5}	Direct Read	Met One E-BAM Unit # E3364	N/A	17	65	No	
N/A	3 - Courtyard, 2nd Floor Level	5/21/2008	12:00 AM	5/22/2008	12:00 AM	1,440	PM _{2.5}	Direct Read	Met One E-BAM Unit # G4526	N/A	27	65	No	
N/A	4 - Albany St 6th Floor Level Scaffolding	5/21/2008	12:00 AM	5/22/2008	12:00 AM	1,440	PM _{2.5}	Direct Read	Met One E-BAM Unit # G4728	N/A	19	65	No	
N/A	5 - Washington St 6th Floor Level Scaffolding	5/21/2008	12:00 AM	5/22/2008	12:00 AM	1,440	PM _{2.5}	Direct Read	Met One E-BAM Unit # G4729	N/A	17	65	No	
N/A	6 - Cedar St 6th Floor Level Scaffolding	5/21/2008	12:00 AM	5/22/2008	12:00 AM	1,440	PM _{2.5}	Direct Read	Met One E-BAM Unit # G4527	N/A	20	65	No	
N/A	9 - 9th Floor Scaffolding, Washington Street Façade	5/21/2008	12:00 AM	5/22/2008	12:00 AM	1,440	PM _{2.5}	Direct Read	Met One E-BAM Unit # F5001	N/A	21	65	No	
N/A	10 - 9th Floor Scaffolding, Cedar Street Façade	5/21/2008	12:00 AM	5/22/2008	12:00 AM	1,440	PM _{2.5}	Direct Read	Met One E-BAM Unit # E3364	N/A	30	65	No	
N/A	3 - Courtyard, 2nd Floor Level	5/22/2008	12:00 AM	5/23/2008	12:00 AM	1,440	PM _{2.5}	Direct Read	Met One E-BAM Unit # G4526	N/A	10	65	No	
N/A	4 - Albany St 6th Floor Level Scaffolding	5/22/2008	12:00 AM	5/23/2008	12:00 AM	1,440	PM _{2.5}	Direct Read	Met One E-BAM Unit # G4728	N/A	9	65	No	
N/A	5 - Washington St 6th Floor Level Scaffolding	5/22/2008	12:00 AM	5/23/2008	12:00 AM	1,440	PM _{2.5}	Direct Read	Met One E-BAM Unit # G4729	N/A	11	65	No	
N/A	6 - Cedar St 6th Floor Level Scaffolding	5/22/2008	12:00 AM	5/23/2008	12:00 AM	1,440	PM _{2.5}	Direct Read	Met One E-BAM Unit # G4527	N/A	12	65	No	
N/A	9 - 9th Floor Scaffolding, Washington Street Façade	5/22/2008	12:00 AM	5/23/2008	12:00 AM	1,440	PM _{2.5}	Direct Read	Met One E-BAM Unit # F5001	N/A	22	65	No	
N/A	10 - 9th Floor Scaffolding, Cedar Street Façade	5/22/2008	12:00 AM	5/23/2008	12:00 AM	1,440	PM _{2.5}	Direct Read	Met One E-BAM Unit # E3364	N/A	13	65	No	
N/A	3 - Courtyard, 2nd Floor Level	5/23/2008	12:00 AM	5/24/2008	12:00 AM	640	PM _{2.5}	Direct Read	Met One E-BAM Unit # G4526	N/A	9	65	No	Instrument off-line for portion of the day. Concentration is not a 24 hr. average
N/A	4 - Albany St 6th Floor Level Scaffolding	5/23/2008	12:00 AM	5/24/2008	12:00 AM	1,440	PM _{2.5}	Direct Read	Met One E-BAM Unit # G4728	N/A	9	65	No	
N/A	5 - Washington St 6th Floor Level Scaffolding	5/23/2008	12:00 AM	5/24/2008	12:00 AM	1,440	PM _{2.5}	Direct Read	Met One E-BAM Unit # G4729	N/A	8	65	No	
N/A	6 - Cedar St 6th Floor Level Scaffolding	5/23/2008	12:00 AM	5/24/2008	12:00 AM	1,440	PM _{2.5}	Direct Read	Met One E-BAM Unit # G4527	N/A	9	65	No	
N/A	9 - 9th Floor Scaffolding, Washington Street Façade	5/23/2008	12:00 AM	5/24/2008	12:00 AM	1,440	PM _{2.5}	Direct Read	Met One E-BAM Unit # F5001	N/A	9	65	No	
N/A	10 - 9th Floor Scaffolding, Cedar Street Façade	5/23/2008	12:00 AM	5/24/2008	12:00 AM	1,440	PM _{2.5}	Direct Read	Met One E-BAM Unit # E3364	N/A	11	65	No	
N/A	3 - Courtyard, 2nd Floor Level	5/24/2008	12:00 AM	5/25/2008	12:00 AM	1,440	PM _{2.5}	Direct Read	Met One E-BAM Unit # G4526	N/A	7	65	No	
N/A	4 - Albany St 6th Floor Level Scaffolding	5/24/2008	12:00 AM	5/25/2008	12:00 AM	1,440	PM _{2.5}	Direct Read	Met One E-BAM Unit # G4728	N/A	8	65	No	
N/A	5 - Washington St 6th Floor Level Scaffolding	5/24/2008	12:00 AM	5/25/2008	12:00 AM	1,440	PM _{2.5}	Direct Read	Met One E-BAM Unit # G4729	N/A	7	65	No	
N/A	6 - Cedar St 6th Floor Level Scaffolding	5/24/2008	12:00 AM	5/25/2008	12:00 AM	1,440	PM _{2.5}	Direct Read	Met One E-BAM Unit # G4527	N/A	7	65	No	
N/A	9 - 9th Floor Scaffolding, Washington Street Façade	5/24/2008	12:00 AM	5/25/2008	12:00 AM	1,440	PM _{2.5}	Direct Read	Met One E-BAM Unit # F5001	N/A	6	65	No	
N/A	10 - 9th Floor Scaffolding, Cedar Street Façade	5/24/2008	12:00 AM	5/25/2008	12:00 AM	1,440	PM _{2.5}	Direct Read	Met One E-BAM Unit # E3364	N/A	7	65	No	

MasterWorks - 130 Cedar Building, Community Monitoring														
Sample No.	Sampling Location	Collection Start Date	Collection (Time on)	Collection End Date	Collection (Time off)	Total Collection Time, minutes	Analysis	Analytical Method	Instrument	Lab Sample	PM ₁₀ Avg. Concentration (µg/m ³)	EPA Site Specific Trigger Level for PM ₁₀ (µg/m ³)	Exceeds Target Air quality or EPA Site Specific Level?	Comments
N/A	3 - Courtyard, 2nd Floor Level	5/18/2008	12:00 AM	5/19/2008	12:00 AM	N/A	PM ₁₀	Direct Read	Met One E-BAM Unit # G4606	N/A	N/A	150	N/A	Instrument failure - pump, zero air flow
N/A	4 - Albany St 6th Floor Level Scaffolding	5/18/2008	12:00 AM	5/19/2008	12:00 AM	1,440	PM ₁₀	Direct Read	Met One E-BAM Unit # G4731	N/A	30	150	No	
N/A	5 - Washington St 6th Floor Level Scaffolding	5/18/2008	12:00 AM	5/19/2008	12:00 AM	1,440	PM ₁₀	Direct Read	Met One E-BAM Unit # G4604	N/A	18	150	No	
N/A	6 - Cedar St 6th Floor Level Scaffolding	5/18/2008	12:00 AM	5/19/2008	12:00 AM	1,440	PM ₁₀	Direct Read	Met One E-BAM Unit # G4605	N/A	27	150	No	
N/A	7 - Roof, East	5/18/2008	12:00 AM	5/19/2008	12:00 AM	1,440	PM ₁₀	Direct Read	Met One E-BAM Unit # E3363	N/A	30	150	No	
N/A	8 - Roof, North	5/18/2008	12:00 AM	5/19/2008	12:00 AM	1,440	PM ₁₀	Direct Read	Met One E-BAM Unit # G4607	N/A	22	150	No	
N/A	3 - Courtyard, 2nd Floor Level	5/19/2008	12:00 AM	5/20/2008	12:00 AM	N/A	PM ₁₀	Direct Read	Met One E-BAM Unit # G4606	N/A	N/A	150	N/A	Instrument failure - pump, zero air flow
N/A	4 - Albany St 6th Floor Level Scaffolding	5/19/2008	12:00 AM	5/20/2008	12:00 AM	1,440	PM ₁₀	Direct Read	Met One E-BAM Unit # G4731	N/A	26	150	No	
N/A	5 - Washington St 6th Floor Level Scaffolding	5/19/2008	12:00 AM	5/20/2008	12:00 AM	1,440	PM ₁₀	Direct Read	Met One E-BAM Unit # G4604	N/A	12	150	No	
N/A	6 - Cedar St 6th Floor Level Scaffolding	5/19/2008	12:00 AM	5/20/2008	12:00 AM	1,330	PM ₁₀	Direct Read	Met One E-BAM Unit # G4605	N/A	18	150	No	
N/A	9 - 9th Floor Scaffolding, Washington Street Façade	5/19/2008	12:00 AM	5/20/2008	12:00 AM	850	PM ₁₀	Direct Read	Met One E-BAM Unit # E3363	N/A	44	150	No	Instrument off-line - new location set up, Concentration is not a 24 hr. average
N/A	10 - 9th Floor Scaffolding, Cedar Street Façade	5/19/2008	12:00 AM	5/20/2008	12:00 AM	850	PM ₁₀	Direct Read	Met One E-BAM Unit # G4607	N/A	29	150	No	Instrument off-line - new location set up, Concentration is not a 24 hr. average
N/A	3 - Courtyard, 2nd Floor Level	5/20/2008	12:00 AM	5/21/2008	12:00 AM	640	PM ₁₀	Direct Read	Met One E-BAM Unit # G4606	N/A	52	150	No	Instrument off-line for portion of the day, Concentration is not a 24 hr. average
N/A	4 - Albany St 6th Floor Level Scaffolding	5/20/2008	12:00 AM	5/21/2008	12:00 AM	1,440	PM ₁₀	Direct Read	Met One E-BAM Unit # G4731	N/A	33	150	No	
N/A	5 - Washington St 6th Floor Level Scaffolding	5/20/2008	12:00 AM	5/21/2008	12:00 AM	1,440	PM ₁₀	Direct Read	Met One E-BAM Unit # G4604	N/A	31	150	No	
N/A	6 - Cedar St 6th Floor Level Scaffolding	5/20/2008	12:00 AM	5/21/2008	12:00 AM	1,440	PM ₁₀	Direct Read	Met One E-BAM Unit # G4605	N/A	34	150	No	
N/A	9 - 9th Floor Scaffolding, Washington Street Façade	5/20/2008	12:00 AM	5/21/2008	12:00 AM	570	PM ₁₀	Direct Read	Met One E-BAM Unit # E3363	N/A	22	150	No	Instrument off-line for portion of the day, Concentration is not a 24 hr. average
N/A	10 - 9th Floor Scaffolding, Cedar Street Façade	5/20/2008	12:00 AM	5/21/2008	12:00 AM	1,440	PM ₁₀	Direct Read	Met One E-BAM Unit # G4607	N/A	32	150	No	
N/A	3 - Courtyard, 2nd Floor Level	5/21/2008	12:00 AM	5/22/2008	12:00 AM	1,440	PM ₁₀	Direct Read	Met One E-BAM Unit # G4606	N/A	27	150	No	
N/A	4 - Albany St 6th Floor Level Scaffolding	5/21/2008	12:00 AM	5/22/2008	12:00 AM	1,440	PM ₁₀	Direct Read	Met One E-BAM Unit # G4731	N/A	37	150	No	
N/A	5 - Washington St 6th Floor Level Scaffolding	5/21/2008	12:00 AM	5/22/2008	12:00 AM	1,440	PM ₁₀	Direct Read	Met One E-BAM Unit # G4604	N/A	29	150	No	
N/A	6 - Cedar St 6th Floor Level Scaffolding	5/21/2008	12:00 AM	5/22/2008	12:00 AM	1,440	PM ₁₀	Direct Read	Met One E-BAM Unit # G4605	N/A	29	150	No	
N/A	9 - 9th Floor Scaffolding, Washington Street Façade	5/21/2008	12:00 AM	5/22/2008	12:00 AM	1,035	PM ₁₀	Direct Read	Met One E-BAM Unit # E3363	N/A	30	150	No	Instrument off-line for portion of the day, Concentration is not a 24 hr. average
N/A	10 - 9th Floor Scaffolding, Cedar Street Façade	5/21/2008	12:00 AM	5/22/2008	12:00 AM	1,440	PM ₁₀	Direct Read	Met One E-BAM Unit # G4607	N/A	36	150	No	
N/A	3 - Courtyard, 2nd Floor Level	5/22/2008	12:00 AM	5/23/2008	12:00 AM	1,440	PM ₁₀	Direct Read	Met One E-BAM Unit # G4606	N/A	17	150	No	
N/A	4 - Albany St 6th Floor Level Scaffolding	5/22/2008	12:00 AM	5/23/2008	12:00 AM	1,440	PM ₁₀	Direct Read	Met One E-BAM Unit # G4731	N/A	18	150	No	
N/A	5 - Washington St 6th Floor Level Scaffolding	5/22/2008	12:00 AM	5/23/2008	12:00 AM	1,440	PM ₁₀	Direct Read	Met One E-BAM Unit # G4604	N/A	21	150	No	
N/A	6 - Cedar St 6th Floor Level Scaffolding	5/22/2008	12:00 AM	5/23/2008	12:00 AM	1,440	PM ₁₀	Direct Read	Met One E-BAM Unit # G4605	N/A	20	150	No	
N/A	9 - 9th Floor Scaffolding, Washington Street Façade	5/22/2008	12:00 AM	5/23/2008	12:00 AM	1,440	PM ₁₀	Direct Read	Met One E-BAM Unit # E3363	N/A	18	150	No	
N/A	10 - 9th Floor Scaffolding, Cedar Street Façade	5/22/2008	12:00 AM	5/23/2008	12:00 AM	1,440	PM ₁₀	Direct Read	Met One E-BAM Unit # G4607	N/A	24	150	No	
N/A	3 - Courtyard, 2nd Floor Level	5/23/2008	12:00 AM	5/24/2008	12:00 AM	1,440	PM ₁₀	Direct Read	Met One E-BAM Unit # G4606	N/A	13	150	No	
N/A	4 - Albany St 6th Floor Level Scaffolding	5/23/2008	12:00 AM	5/24/2008	12:00 AM	1,440	PM ₁₀	Direct Read	Met One E-BAM Unit # G4731	N/A	13	150	No	
N/A	5 - Washington St 6th Floor Level Scaffolding	5/23/2008	12:00 AM	5/24/2008	12:00 AM	1,440	PM ₁₀	Direct Read	Met One E-BAM Unit # G4604	N/A	11	150	No	
N/A	6 - Cedar St 6th Floor Level Scaffolding	5/23/2008	12:00 AM	5/24/2008	12:00 AM	1,440	PM ₁₀	Direct Read	Met One E-BAM Unit # G4605	N/A	16	150	No	
N/A	9 - 9th Floor Scaffolding, Washington Street Façade	5/23/2008	12:00 AM	5/24/2008	12:00 AM	1,440	PM ₁₀	Direct Read	Met One E-BAM Unit # E3363	N/A	13	150	No	
N/A	10 - 9th Floor Scaffolding, Cedar Street Façade	5/23/2008	12:00 AM	5/24/2008	12:00 AM	1,440	PM ₁₀	Direct Read	Met One E-BAM Unit # G4607	N/A	16	150	No	
N/A	3 - Courtyard, 2nd Floor Level	5/24/2008	12:00 AM	5/25/2008	12:00 AM	1,440	PM ₁₀	Direct Read	Met One E-BAM Unit # G4606	N/A	9	150	No	
N/A	4 - Albany St 6th Floor Level Scaffolding	5/24/2008	12:00 AM	5/25/2008	12:00 AM	1,440	PM ₁₀	Direct Read	Met One E-BAM Unit # G4731	N/A	11	150	No	
N/A	5 - Washington St 6th Floor Level Scaffolding	5/24/2008	12:00 AM	5/25/2008	12:00 AM	1,440	PM ₁₀	Direct Read	Met One E-BAM Unit # G4604	N/A	9	150	No	
N/A	6 - Cedar St 6th Floor Level Scaffolding	5/24/2008	12:00 AM	5/25/2008	12:00 AM	1,440	PM ₁₀	Direct Read	Met One E-BAM Unit # G4605	N/A	13	150	No	
N/A	9 - 9th Floor Scaffolding, Washington Street Façade	5/24/2008	12:00 AM	5/25/2008	12:00 AM	1,440	PM ₁₀	Direct Read	Met One E-BAM Unit # E3363	N/A	10	150	No	
N/A	10 - 9th Floor Scaffolding, Cedar Street Façade	5/24/2008	12:00 AM	5/25/2008	12:00 AM	1,440	PM ₁₀	Direct Read	Met One E-BAM Unit # G4607	N/A	11	150	No	

350 Hochberg Road, Monroeville, PA 15146
 Phone: (724) 325-1776 Fax: (724) 733-1799

Mercury Vapor (Hg^0) Air Results for Outdoor Community
 Monitoring Stations by Location as recorded by the Lumex Analyzer



Report Summary

Air Mercury Results (Hg⁰, ng/m³) as recorded by the Lumex RA915+ analyzer
Week of 05/18/08 to 05/24/08

Date	Mercury (Hg ⁰) ng/m ³ 30-sec readings	1 Southeast corner sidewalk bridge	2 Northeast corner sidewalk bridge	3 Courtyard 2nd floor level	4 Albany Street 6th floor scaffolding	5 Washington Street 6th floor scaffolding	6 Cedar Street 6th floor scaffolding	7 Roof Washington Street façade	8 Roof Cedar Street façade
18-May-08	# Samples	9	9	9	9	9	9	9	9
	Average	2	4	6	4	2	2	5	5
	Maximum	2	4	7	5	2	2	7	5
19-May-08	# Samples	36	36	33	39	36	36	18	18
	Average	3	3	5	6	7	7	6	7
	Maximum	5	5	8	11	17	20	9	11
20-May-08	# Samples	18	18	18	18	18	18	18	18
	Average	4	3	5	5	3	6	6	4
	Maximum	6	3	6	7	5	8	6	6
21-May-08	# Samples	18	18	18	18	18	18	18	18
	Average	3	5	4	4	4	4	4	4
	Maximum	5	9	5	5	5	5	5	5
22-May-08	# Samples	9	9	12	9	9	9	9	15
	Average	7	6	4	2	6	6	2	3
	Maximum	8	7	6	4	10	9	2	6
23-May-08	# Samples	18	18	18	18	18	18	18	18
	Average	9	5	5	4	2	3	5	2
	Maximum	15	9	6	7	4	6	8	6
24-May-08	# Samples	9	9	9	9	9	9	9	9
	Average	4	2	6	2	4	2	2	4
	Maximum	5	2	7	2	4	2	2	5