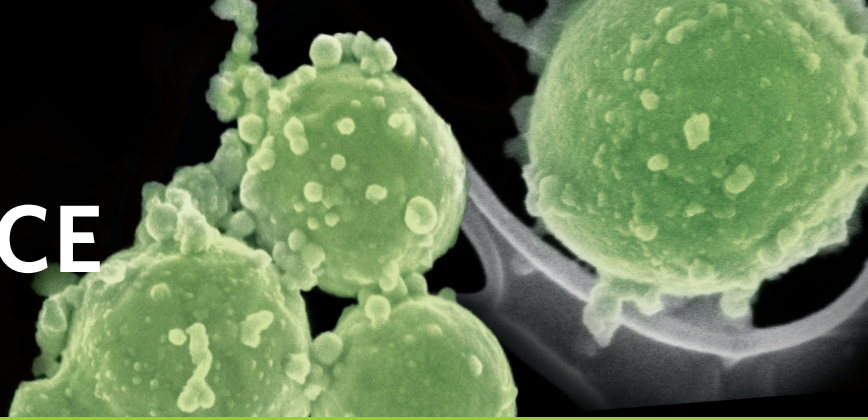


TRACE EVIDENCE SPECIALISTS



TRACE EVIDENCE ANALYSIS

Our forensic scientists have worked with more than 400 law enforcement agencies throughout the United States and abroad to ensure accurate and reliable results.

- » Cordage Examination
- » Gunshot Residue Analysis
- » Fiber Examination
- » Animal/Human Hair Examination
- » Head Lamp Examination
- » Paint & Tape Examination
- » General Particulate Analysis
- » Distance Determination

EXPERT SERVICES

RJ Lee Group's criminal forensics experts are qualified in 26 states and the District of Columbia, as well as in Bermuda and the U.S. Virgin Islands. We comprise a unique blend of talent and scientific knowledge to provide support in a criminal investigation.

TURNAROUND TIME

We provide exceptional turnaround time with an average of 5 to 10 working days!



ANALYTICAL TECHNIQUES

Trace evidence consists of very small to microscopic material found at a crime scene and is often a crucial element in a criminal case. Our forensic scientists use a variety of techniques and instrumentation to determine trace composition.

- » Computer Controlled Scanning Electron Microscopy (CCSEM)
- » Scanning Electron Microscopy (SEM)
- » Fourier Transform Infrared Spectroscopy (FTIR)
- » Gas Chromatography/Mass Spectroscopy (GC/MS)
- » Thermal Gravimetric Analysis (TGA)
- » Differential Scanning Calorimetry (DSC)
- » Transmission Electron Microscopy (TEM)
- » Inductively Coupled Plasma Mass Spectrometry (ICPMS)
- » X-Ray Diffraction (XRD)
- » Raman Spectroscopy
- » Optical Microscopy
- » Laboratory Information Management System (THEMIS)

LEARN MORE
VISIT WWW.GSR.RJLG.COM

 **RJ LEE GROUP**
DELIVERING SCIENTIFIC RESOLUTION

RATE SCHEDULE

ANALYTICAL RATES

	PRICE	UNIT
Gunshot Residue (GSR)		
Stub Sample	300	Each
Control Stub Sample	150	Each
Particle Extraction Stub Sample	400	Each
ISID Kit Swab Sample	500	Each
Surface Sampling Strip Sample	600	Each
Fiber, Hair, Lamp, Paint, Tape, and Cordage	250	Hour
Distance Determination*	400	Hour

* Call for more information

EXPERT SERVICES

	PRICE	UNIT
Consultation	250	Hour + expenses
Court Testimony	2,000	Day + expenses
Video Conferencing / Depositions	250	Hour + expenses
Request for additional documents	200	Hour

Client is responsible for all travel related expenses. Client is responsible for arranging travel and lodging when located greater than 150 miles from Monroeville, PA. Additional charges may apply for workday that exceeds 12 hours. Other terms and conditions may apply.

TURNAROUND TIME POLICY

Normal turnaround time is 5 to 10 working days.

Requests for fewer than 5 days have the following increases applied.

25% for (4) working days	75% for (2) working days
50% for (3) working days	100% for (1) working days

Return shipments sent via UPS Ground unless otherwise requested.

PRODUCT CATALOG

Gunshot Residue Collection Kit (Skin)

Catalog # GSR-SEM, \$20.00

In our gunshot residue collection kit, scanning electron microscopy (SEM) stubs are covered with double sided adhesive carbon tape. The stubs are designed to sample skin and recover small particles for analysis by SEM. Contained in each kit are four collection stubs to sample the right and left hands (back and palm), a control stub, latex gloves, information sheet, and an evidence seal. The price of this kit is deducted from the cost of analysis when both both kit and analysis are purchased from RJ Lee Group.

Fabric/Surface Sampling Kit

Catalog # GSR-SEM/SUR, \$20.00

In our fabric/surface sampling kits, stubs are covered with a double sided adhesive tape. Solid particulate can be collected from a variety of surfaces such as car interiors, table tops, shoes, and clothing for analysis by SEM. These stubs can also be used as passive samplers. Contained in each kit are 6 unlabeled collection stubs. The price of this kit is deducted from the cost of analysis when both both kit and analysis are purchased from RJ Lee Group.



LEARN MORE
VISIT WWW.GSR.RJLG.COM

 **RJ LEE GROUP**
DELIVERING SCIENTIFIC RESOLUTION